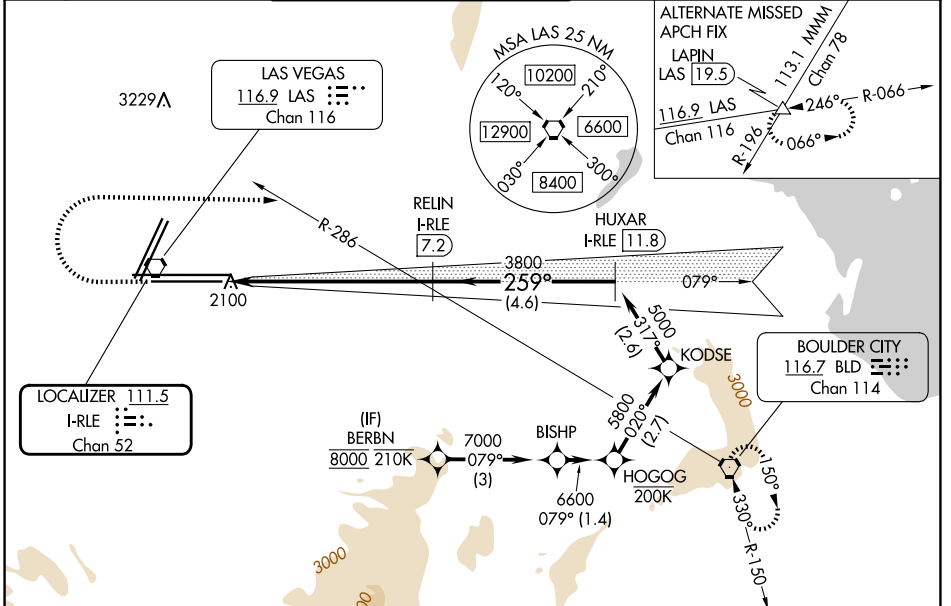


LOC/DME I-RLE 111.5 Chan 52	APP CRS 259°	Rwy Ldg 26L 10526 26R 12638	TDZE 2069 2067	Apt Elev 2181 2181
--	------------------------	---	------------------------------------	--

ILS Y or LOC Y RWY 26L

HARRY REID INTL (LAS)

RNP APCH - GPS. DME required.	MALSF Rwy 26L 	MALS Rwy 26R 	MISSED APPROACH: Climb to 3200 then climbing right turn to 6000 heading 080° and on BLD R-286 to BLD VORTAC and hold, continue climb-in-hold to 6000.		
Inop table does not apply to S-ILS 26L or Sidestep 26R. For inop ALS increase S-LOC 26L Cats C and D visibility to 1 3/8 SM.					
D-ATIS 132.4	LAS VEGAS APP CON 125.025 379.15 (West) 119.775 282.2 (East)	LAS VEGAS TOWER 118.75 257.8 (Rwy 1L/19R, 1R/19L) 119.9 257.8 (Rwy 8L/26R, 8R/26L)	GND CON 121.1 270.8 E of 1R/19L 121.9 254.3 W of 1L/19R	CLNC DEL 118.0	CPDLC



ELEV 2181	TDZE 26L 2069	TDZE 26R 2067
-----------	---------------	---------------

