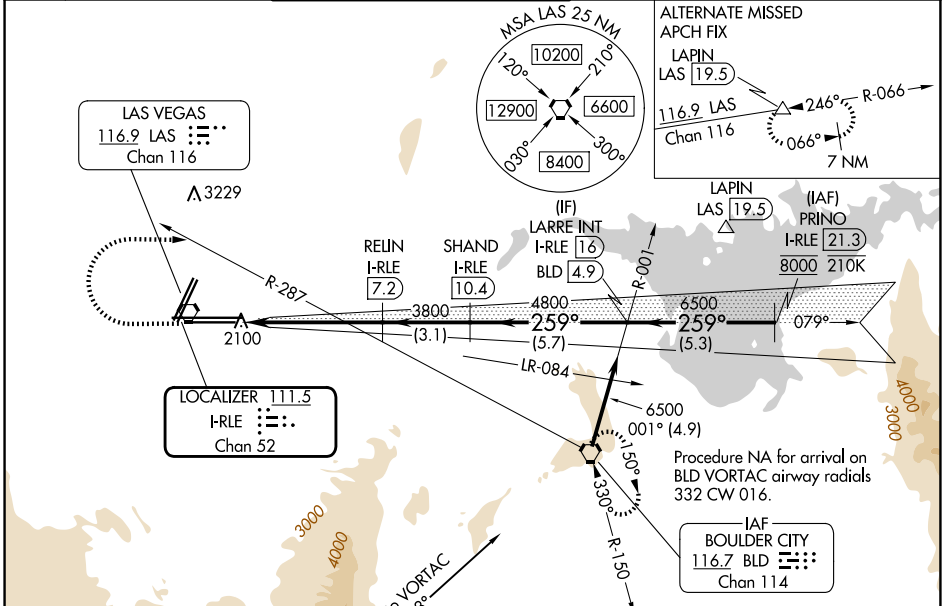


LOC/DME I-RLE	APP CRS	Rwy Ldg	26L	26R
<b>111.5</b>	<b>259°</b>	TDZE	<b>10526</b>	<b>12638</b>
Chan <b>52</b>		Apt Elev	<b>2069</b>	<b>2067</b>
			<b>2181</b>	<b>2181</b>

# ILS Z or LOC Z RWY 26L

HARRY REID INTL (LAS)

DME required.		MALS Rwy 26L	MALS Rwy 26R	MISSED APPROACH: Climb to 3200 then climbing right turn to 6000 heading 080° and on BLD R-287 to BLD VORTAC and hold, continue climb-in-hold to 6000.		
<p>▼ Inop table does not apply to S-ILS 26L and Sidestep 26R. For inop ALS, increase S-LOC 26L Cat C/D/E visibility to 1 3/8 SM.</p>						
D-ATIS	LAS VEGAS APP CON	LAS VEGAS TOWER		GND CON	CLNC DEL	CPDLC
<b>132.4</b>	<b>125.025 379.15</b> (West) <b>119.775 282.2</b> (East)	<b>118.75 257.8</b> (Rwy 1L/19R, 1R/19L) <b>119.9 257.8</b> (Rwy 8L/26R, 8R/26L)		<b>121.1 270.8</b> E of 1R/19L <b>121.9 254.3</b> W of 1L/19R	<b>118.0</b>	



3200	6000	BLD R-287	BLD	VGSI and ILS glidepath not coincident (VGSI Angle 3.00/TCH 84).		
				SHAND I-RLE 10.4	LARRE INT I-RLE 16 BLD 4.9	
		RELIN I-RLE 7.2			PRINO I-RLE 21.3	
		I-RLE 3.1				
		I-RLE 1.9				
		3800		4800	6500	
		1.2 NM	4.1 NM	3.1 NM	5.7 NM	5.3 NM
CATEGORY	A	B	C	D	E	
S-ILS 26L	2269-3/4 200 (100-3/4)					
S-LOC 26L	2520-3/4	451 (400-3/4)	2520-1 451 (400-1)			
SIDESTEP 26R	2560-1	493 (400-1)	2560-1 1/2 493 (400-1 1/2)	2560-2	493 (400-2)	
CIRCLING	3020-1 1/4 839 (900-1 1/4)	3060-1 1/4 879 (900-1 1/4)	3100-2 3/4 919 (1000-2 3/4)	3540-3	1359 (1400-3)	

ELEV 2181	<b>D</b>	TDZE 26L 2069	TDZE 26R 2067
-----------	----------	---------------	---------------

Procedure NA for arrival on BLD VORTAC airway radials 332 CW 016.

IAF BOULDER CITY 116.7 BLD Chan 114

MIRL Rwy 1R-19L  
REIL Rws 1R, 8R, 19L and 19R  
HIRL Rws 1L-19R, 8L-26R and 8R-26L

SW-4, 11 JUN 2026 to 09 JUL 2026

SW-4, 11 JUN 2026 to 09 JUL 2026