

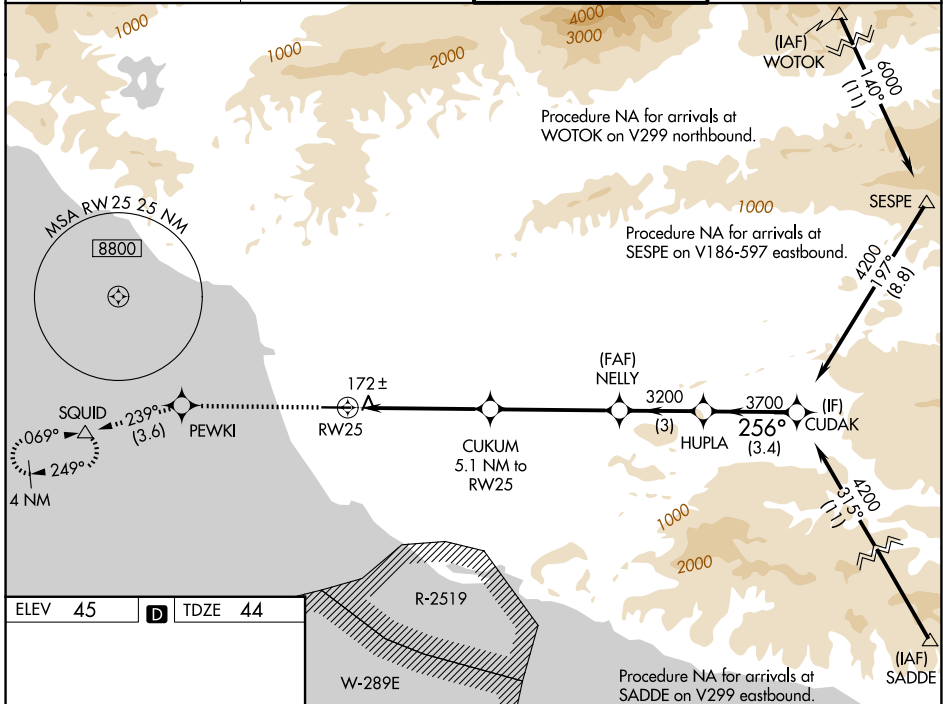
WAAS CH <b>86299</b> <b>W25A</b>	APP CRS <b>256°</b>	Rwy Ldg <b>5500</b> TDZE <b>44</b> Apt Elev <b>45</b>
--	------------------------	---

# RNAV (GPS) RWY 25

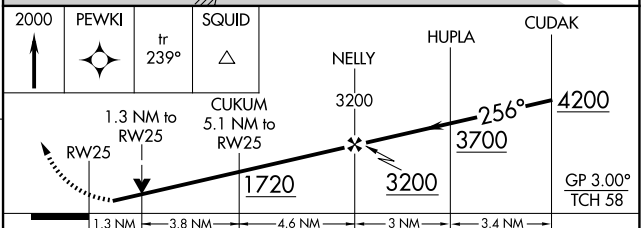
OXNARD (OXR)

RNP APCH - GPS.	MALSF	MISSED APPROACH: Climb to 2000 direct PEWKI and on track 239° to SQUID and hold.
<p><b>⚠</b> Inoperative table does not apply. Baro-VNAV NA when using Camarillo altimeter setting. For uncompensated Baro-VNAV systems, LNAV/VNAV NA below -1.5°C or above 43°C. When local altimeter setting not received, use Camarillo altimeter setting and increase LPV DA to 440 feet, LNAV/VNAV DA to 437 feet. Increase all MDAs 20 feet and Circling Cat C visibility ¼ SM.</p>		

ATIS <b>118.05</b>	POINT MUGU APP CON* <b>124.7 335.5</b>	OXNARD TOWER* <b>134.95 (CTAF) 257.8</b>	GND CON <b>121.9</b>
-----------------------	---	---	-------------------------



ELEV 45	<b>D</b>	TDZE 44
<p>REIL Rwy 7 <b>⓪</b> MIRL Rwy 7-25 <b>⓪</b></p>		



CATEGORY	A	B	C	D
LPV DA	424-1 380 (400-1)			
LNAV/VNAV DA	421-1 377 (400-1)			
LNAV MDA	520-1	476 (500-1)	520-1 <sup>3</sup> / <sub>8</sub>	476 (500-1 <sup>3</sup> / <sub>8</sub> )
CIRCLING	520-1	475 (500-1)	700-1 <sup>3</sup> / <sub>4</sub> 655 (700-1 <sup>3</sup> / <sub>4</sub> )	760-2 <sup>1</sup> / <sub>4</sub> 715 (800-2 <sup>1</sup> / <sub>4</sub> )

SW-3, 11 JUN 2026 to 09 JUL 2026

SW-3, 11 JUN 2026 to 09 JUL 2026