

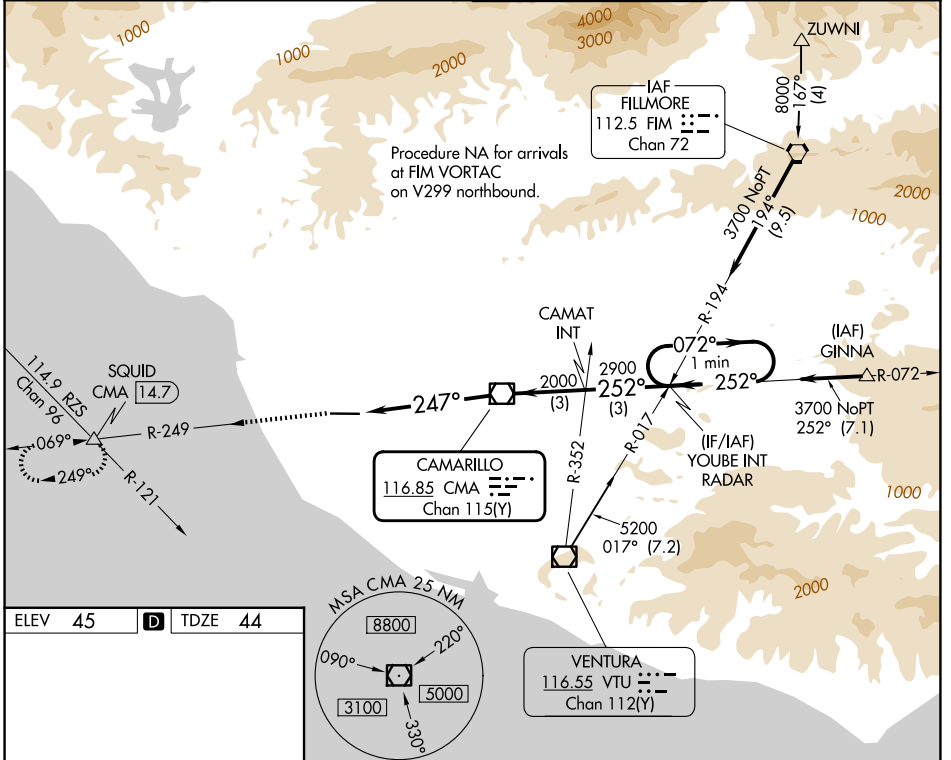
VOR/DME CMA 116.85 Chan 115(Y)	APP CRS 247°	Rwy Ldg 5500 TDZE 44 Apt Elev 45
--	------------------------	---

VOR RWY 25

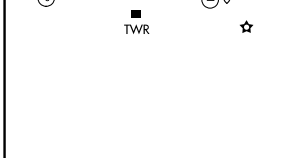
OXNARD (OXR)

DME required.	MALSF	MISSED APPROACH: Climb to 2000 on CMA R-249 to SQUID INT/ 14.7 DME and hold.
<p>▼ For inop ALS, when using Camarillo altimeter setting, increase Cat C/D visibility to 1 3/4 SM. Rwy 25 helicopter visibility reduction below 3/4 SM NA.</p> <p>▲ When local altimeter setting not received, use CMA altimeter setting and increase all MDAs 20 feet, increase Circling Cat C visibility 1/4 SM.</p>		

ATIS 118.05	POINT MUGU APP CON* 124.7 335.5	OXNARD TOWER* 134.95 (CTAF) 257.8	GND CON 121.9
-----------------------	---	---	-------------------------



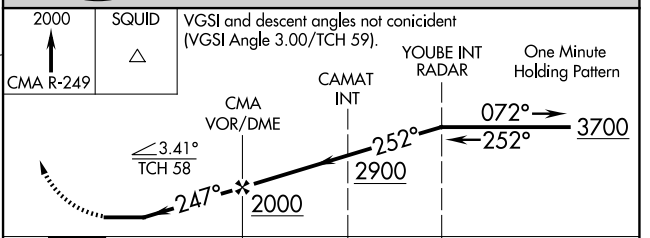
ELEV 45	D	TDZE 44
---------	----------	---------



REIL Rwy 7 **⓪**
MIRL Rwy 7-25 **⓪**

FAF to MAP 5.3 NM

Knots	60	90	120	150	180
Min:Sec	5:18	3:32	2:39	2:07	1:46



CATEGORY	A	B	C	D
S-25	620-1	576 (600-1)	620-1 3/8	576 (600-1 1/8)
CIRCLING	620-1	575 (600-1)	700-1 3/4 655 (700-1 1/4)	760-2 1/4 715 (800-2 1/4)

SW-3, 11 JUN 2026 to 09 JUL 2026

SW-3, 11 JUN 2026 to 09 JUL 2026