

APP CRS	Rwy Ldg	<b>6013</b>
<b>073°</b>	TDZE	<b>68</b>
	Apt Elev	<b>77</b>

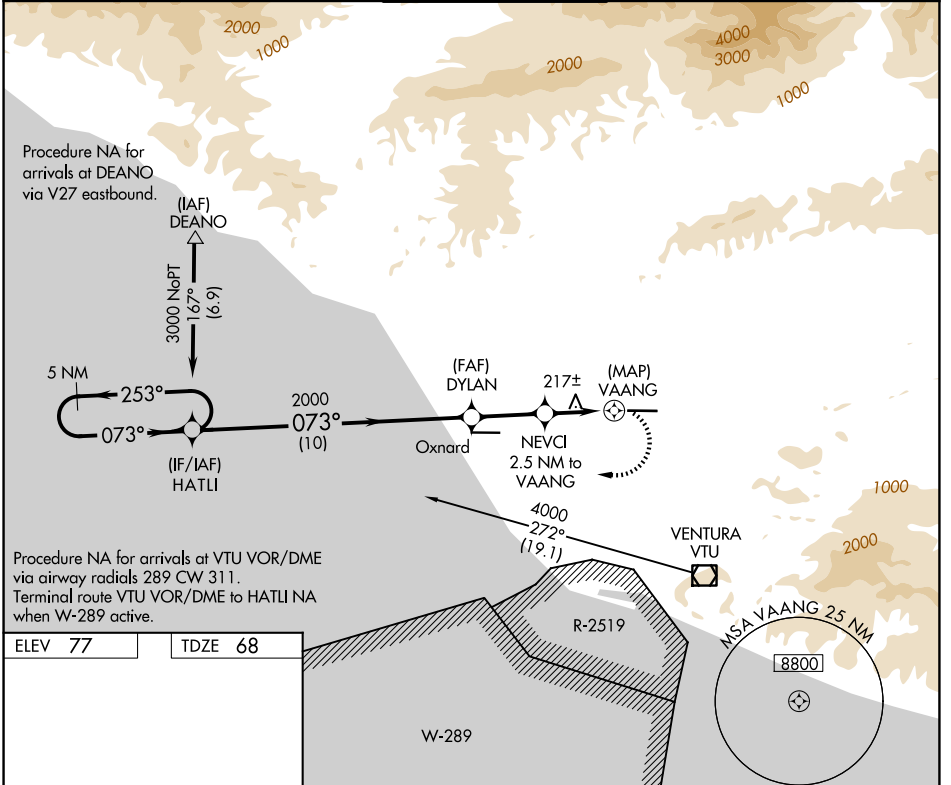
# RNAV (GPS) RWY 8

CAMARILLO (CMA)

**⚠** Circling NA north of Rwy 8-26. DME/DME RNP-0.3 NA.  
 When local altimeter setting not received, use Oxnard altimeter setting and increase all MDA 20 feet.

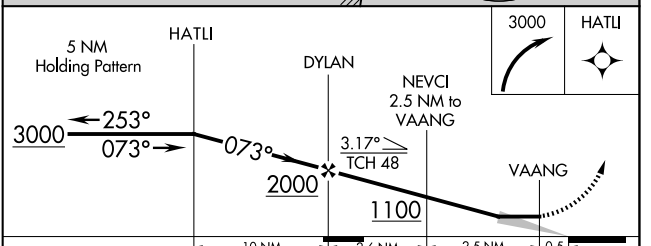
MISSED APPROACH: Climbing right turn to 3000 direct HATLI and hold.

ATIS <b>126.025</b>	POINT MUGU APP CON * <b>124.7 335.5</b>	CAMARILLO TOWER * <b>128.2 (CTAF) 0 269.4</b>	GND CON <b>121.8</b>	UNICOM <b>122.95</b>
------------------------	--	--	-------------------------	-------------------------



ELEV 77	TDZE 68
---------	---------

REIL Rwy 8 and 26 **Ⓡ**  
 MIRL Rwy 8-26 **Ⓡ**



CATEGORY	A	B	C	D
LNAV MDA	840-1 772 (800-1)	840-1¼ 772 (800-1¼)	840-2½	772 (800-2½)
CIRCLING	840-1 763 (800-1)	840-1¼ 763 (800-1¼)	840-2½ 763 (800-2½)	1100-3 1023 (1100-3)

SW-3, 11 JUN 2026 to 09 JUL 2026

SW-3, 11 JUN 2026 to 09 JUL 2026