

APP CRS	Rwy Ldg	6013
252°	TDZE	77
	Apt Elev	77

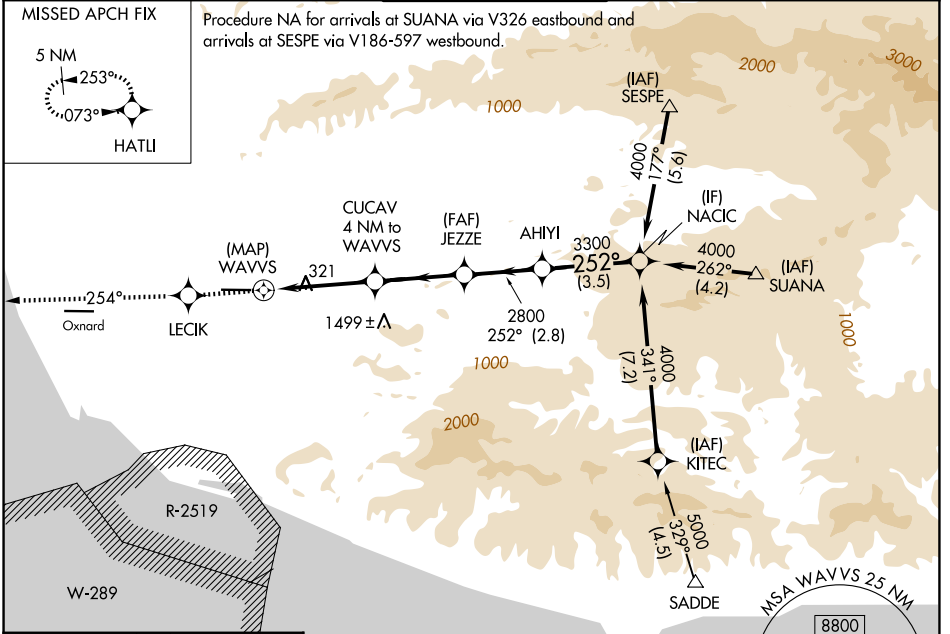
RNAV (GPS) Y RWY 26

CAMARILLO (CMA)

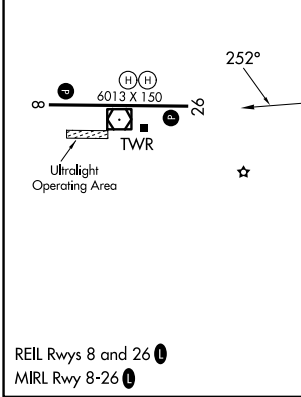
⚠ Circling NA north of Rwy 8-26. DME/DME RNP-0.3 NA.
⚠ If local altimeter setting not received, use Oxnard altimeter setting and increase all MDAs 20 feet. VDP NA when using Oxnard altimeter setting.

MISSED APPROACH: Climb to 3000 direct LECIK and via 254° track to HATLI and hold.

ATIS 126.025	POINT MUGU APP CON * 124.7 335.5	CAMARILLO TOWER * 128.2 (CTAF) 0 269.4	GND CON 121.8	UNICOM 122.95
------------------------	--	--	-------------------------	-------------------------



ELEV 77	TDZE 77
---------	---------



3000	LECIK	HATLI	VGSI and descent angles not coincident (VGSI Angle 3.00/TCH 48).
252° tr			
*1720 when using Oxnard altimeter setting.			
WAVVS	CUCAV 4 NM to WAVVS	JEZZE	AHIYI
1700*	2800	3300	NACIC
0.5	1.1	2.9	3.2
3.2	2.8	3.5	
CATEGORY	A	B	C
LNAV MDA	620-1 543 (600-1)	620-1½ 543 (600-1½)	620-1¾ 543 (600-1¾)
CIRCLING	620-1 543 (600-1)	640-1½ 563 (600-1½)	1100-3 1023 (1100-3)

SW-3, 11 JUN 2026 to 09 JUL 2026

SW-3, 11 JUN 2026 to 09 JUL 2026