

# HI-TACAN RWY 30

TACAN VBG Chan 59(Y)	APCH CRS 299°	Rwy Idg 15,000 TDZE 368 Arpt Elev 368
-------------------------	------------------	---

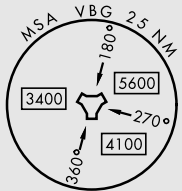
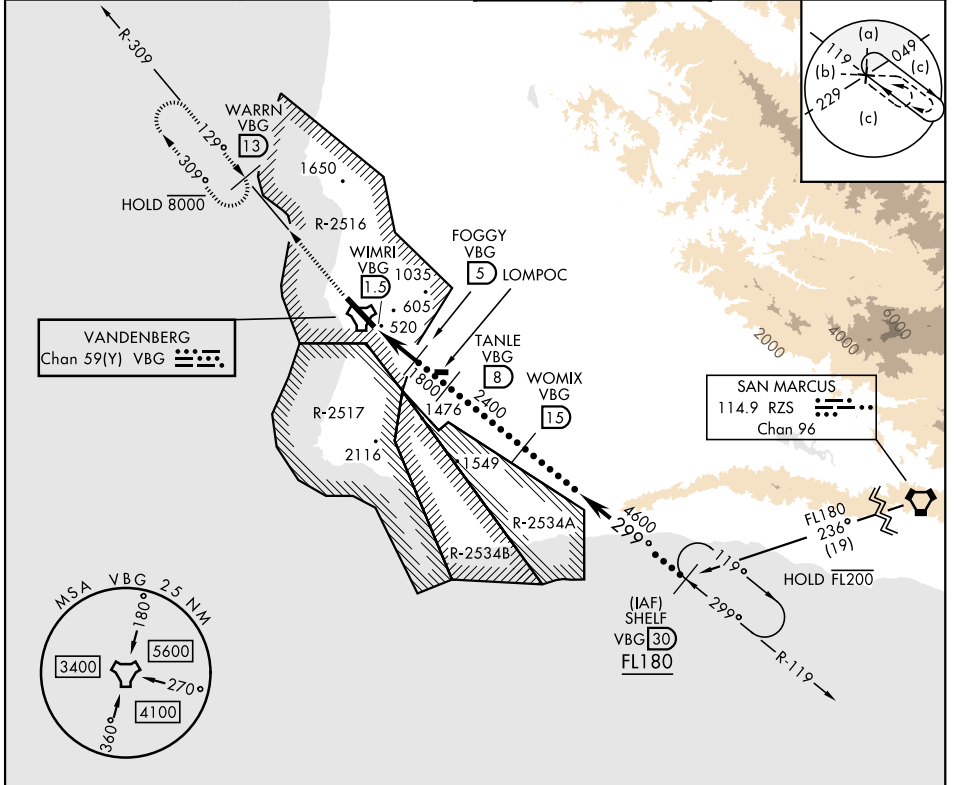
[USSF]

VANDENBERG SFB (KVBG)

ALSF-2
 

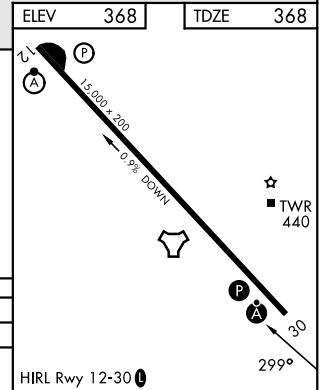
**MISSED APPROACH:** Climb out VBG TACAN R-309 to WARRN and hold. Continue climb in hold maintain 4000.

<b>ATIS</b> <b>133.125 257.975</b>	<b>SANTA BARBARA APP/DEP CON *</b> <b>124.15 327.8</b>	<b>TOWER *</b> <b>124.95 (CTAF) 326.2</b>	<b>GND CON</b> <b>121.75 275.8</b>
---------------------------------------	---	--	---------------------------------------



EMERG SAFE ALT 100 NM 11,100

4000 VBG R-309 WARRN VBG 13	VBG 2.5 WIMIRI VBG 1.5	FOGGY VBG 5 TANLE VBG 8 WOMIX VBG 15	SHELF VBG 30 FL180
VBG TACAN 3.20° TCH 71		1800 2400 4600	
0.5 3.5 NM			
CATEGORY	C	D	E
S-30*	920/60 552 (600-1½)		
CIRCLING	1020-1¾ 652 (700-1¾)	1180-2¾ 812 (900-2¾)	1560-3 1192 (1200-3)



# HI-TACAN RWY 30

SW-3, 11 JUN 2026 to 09 JUL 2026

SW-3, 11 JUN 2026 to 09 JUL 2026