

ILS or LOC/DME RWY 12

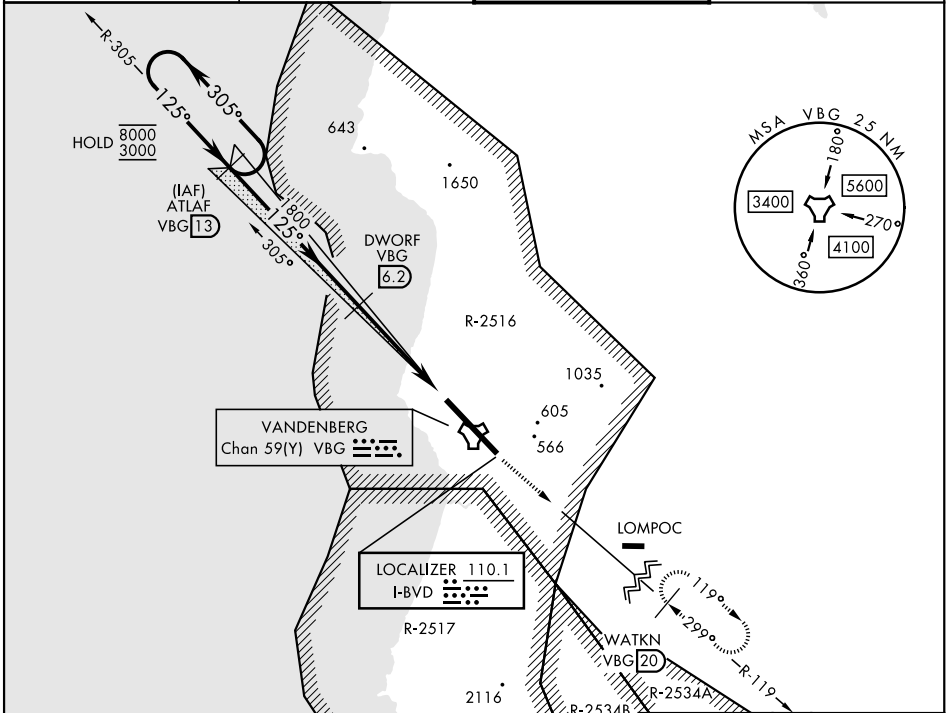
LOC I-BVD 110.1	APCH CRS 125°	Rwy Ldg 15,000 TDZE 265 Arpt Elev 368
---------------------------	-------------------------	--

[USSF]

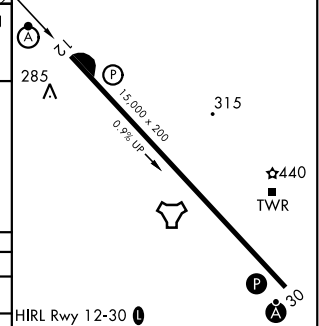
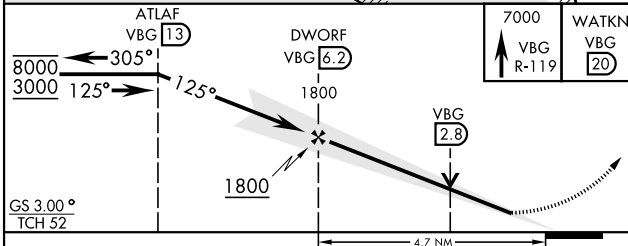
VANDENBERG SFB (KVBG)

DME required ▼ *When ALS inop, increase RVR to 40 and vis to ¾ mile. **When ALS inop, increase CAT AB RVR to 55 and vis to 1 mile, CAT CDE vis to 1¼ miles.	ALS-F-2 ⓐ	MISSED APPROACH: Climb out VBG TACAN R-119 until 20 DME (WATKN) and hold. Continue climb in hold maintain 7000.
---	--------------	---

ATIS 133.125 257.975	SANTA BARBARA APP CON★ 124.15 327.8	TOWER★ 124.95 (CTAF) 326.2	GND CON 121.75 275.8
--------------------------------	--	---	--------------------------------



EMERG SAFE ALT 100 NM 11,100	ELEV 368	TDZE 265
------------------------------	-----------------	-----------------



CATEGORY	A	B	C	D	E
S-ILS 12*	465/24		200	(100-½)	
S-LOC 12**	700/24	435 (400-½)	700/40	435	(400-¾)
CIRCLING	980-1	1000-1	1020-1¾	1180-2¾	1560-3
	612 (700-1)	632 (700-1)	652 (700-1¾)	812 (900-2¾)	1192 (1200-3)

LOMPOC, CALIFORNIA 34° 44' N - 120° 35' W VANDENBERG SFB (KVBG)

Amtd 4 13JUN24

ILS or LOC/DME RWY 12

SW-3, 11 JUN 2026 to 09 JUL 2026

SW-3, 11 JUN 2026 to 09 JUL 2026