

TACAN RWY 12

TACAN VBG Chan 59(Y)	APCH CRS 129°	Rwy Ldg TDZE Arprt Elev 15,000 265 368
--------------------------------	-------------------------	--

[USSF]

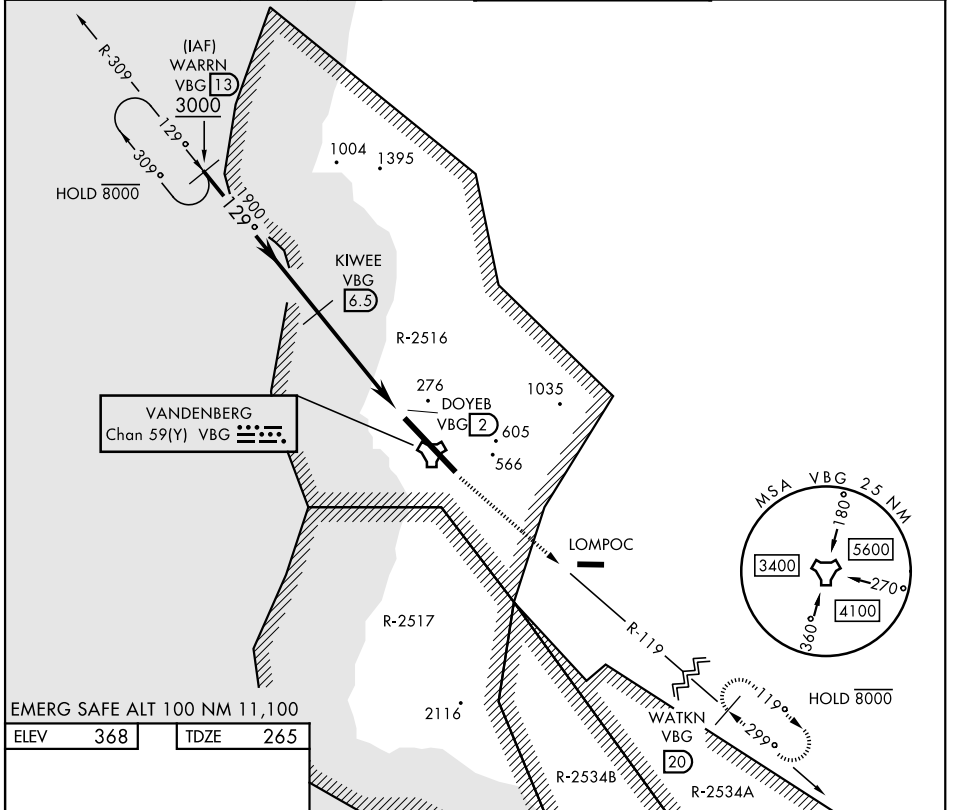
VANDENBERG SFB (KVBG)

▼ * When ALS inop, increase CAT AB RVR to 55 and vis to 1 mile; CAT CDE vis to 1½ miles.

 ALS-F2

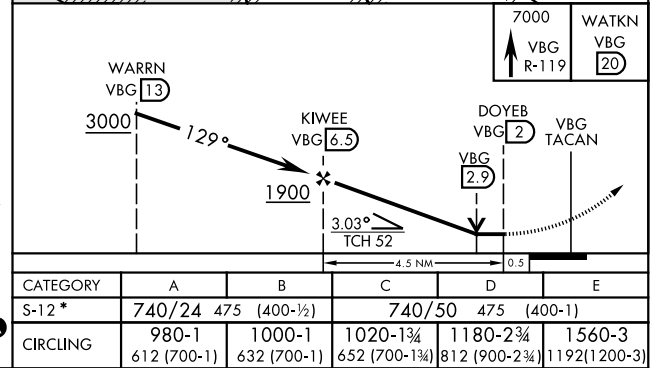
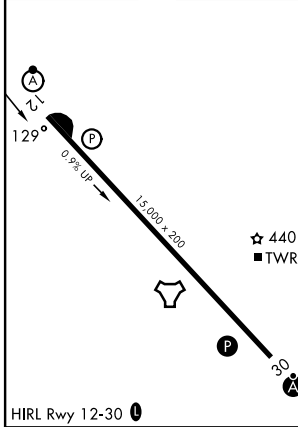
 MISSED APPROACH: Climb out VBG TACAN R-119 until 20 DME (WATKN) and hold. Continue climb in hold maintain 7000.

ATIS 133.125 257.975	SANTA BARBARA APP CON★ 124.15 327.8	TOWER★ 124.95 0 (CTAF) 326.2	GND CON 121.75 275.8
--------------------------------	--	---	--------------------------------



EMERG SAFE ALT 100 NM 11,100

ELEV 368	TDZE 265
----------	----------



TACAN RWY 12

SW-3, 11 JUN 2026 to 09 JUL 2026

SW-3, 11 JUN 2026 to 09 JUL 2026