

VOR/DME CVO 115.4 Chan 101	APP CRS 252°	Rwy Ldg TDZE Apt Elev N/A N/A 250
--	------------------------	--

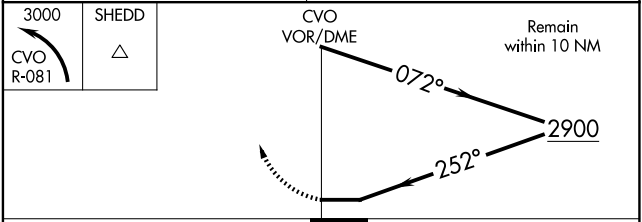
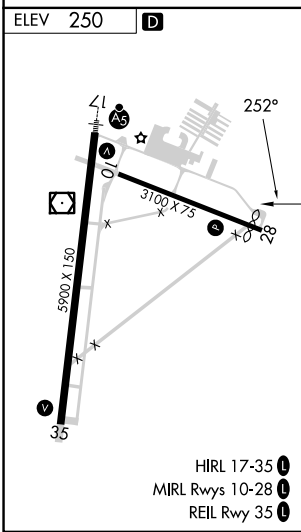
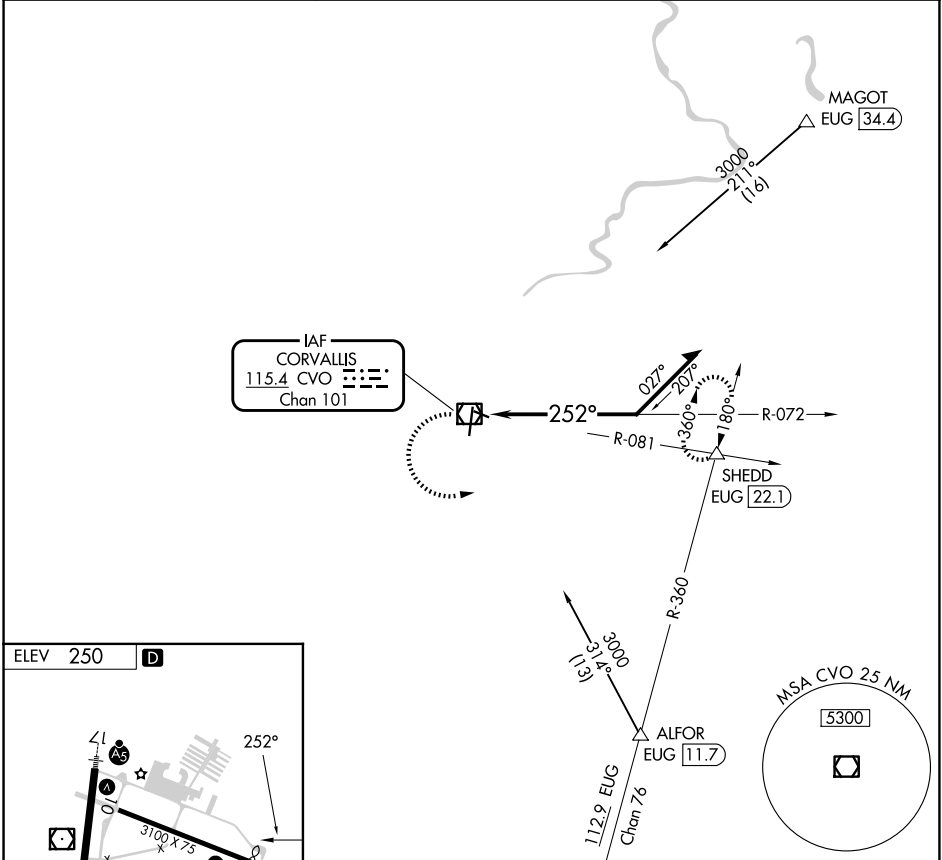
VOR-A

CORVALLIS MUNI (CVO)

⚠ When local altimeter setting not received, procedure NA. Circling Rwy 28 NA at night.

⚠ MISSED APPROACH: Climbing left turn to 3000 on CVO VOR/DME R-081 to SHEDD INT/EUG 22.1 DME and hold, continue climb-in-hold to 3000.

AWOS-3PT 135,775	CASCADE APP CON * 127.5 348.7	UNICOM 123.075 (CTAF) 0
----------------------------	---	-----------------------------------



CATEGORY	A	B	C	D
CIRCLING	1400-1¼ 1150 (1200-1¼)	1400-1½ 1150 (1200-1½)	1400-3	1150 (1200-3)

NW-1, 11 JUN 2026 to 09 JUL 2026

NW-1, 11 JUN 2026 to 09 JUL 2026