

VORTAC IPL <b>115.9</b> Chan <b>106</b>	APP CRS <b>311°</b>	Rwy Ldg TDZE Apt Elev	<b>N/A</b> <b>N/A</b> <b>-54</b>
---	------------------------	-----------------------------	--

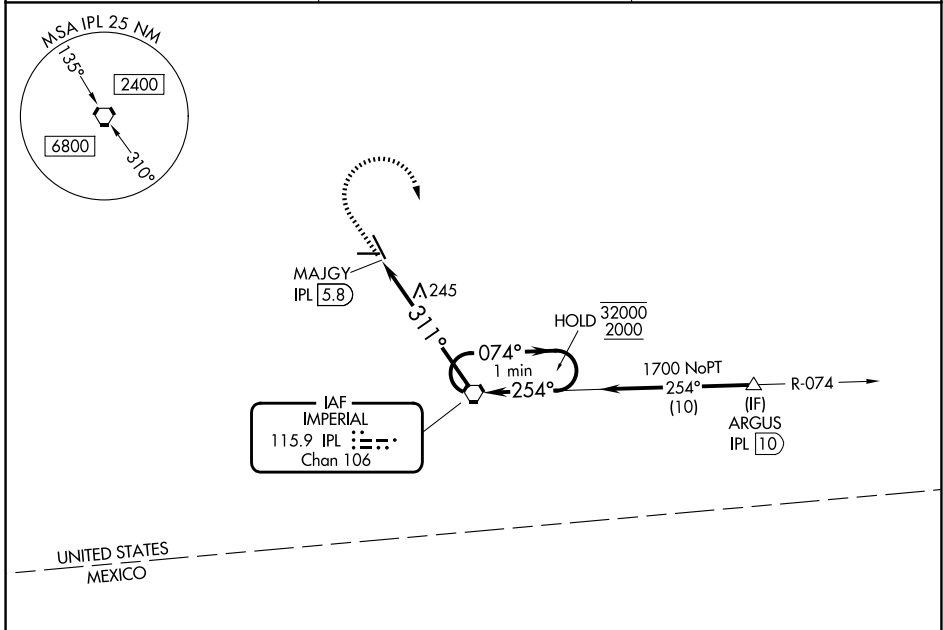
**VOR-A**  
IMPERIAL COUNTY (IPL)

DME required for procedure entry at ARGUS.

**⚠** Circling to Rwy 32 NA at night. When local altimeter setting not received, procedure NA.

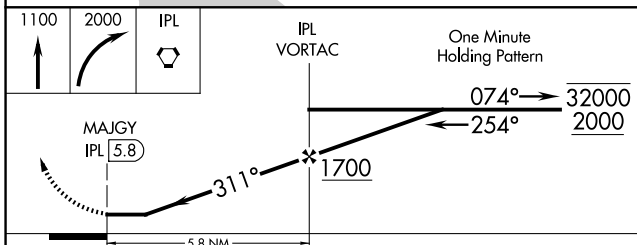
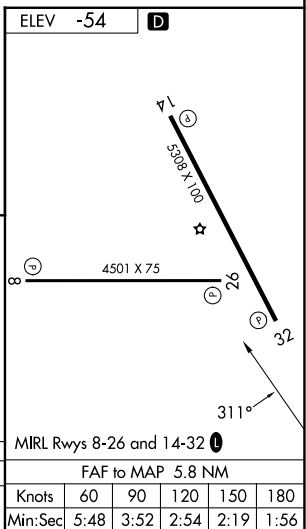
MISSED APPROACH: Climb to 1100 then climbing right turn to 2000 direct IPL VORTAC and hold.

ASOS <b>132.175</b>	YUMA CERAP <b>132.275 292.2</b>	UNICOM <b>122.7 (CTAF) 0</b>
------------------------	------------------------------------	---------------------------------



SW-3, 11 JUN 2026 to 09 JUL 2026

SW-3, 11 JUN 2026 to 09 JUL 2026



CATEGORY	A	B	C	D
CIRCLING	500-1	554 (600-1)	560-1 3/4 614 (700-1 3/4)	560-2 614 (700-2)

ELEV	-54	<b>D</b>			
FAF to MAP	5.8 NM				
Knots	60	90	120	150	180
Min:Sec	5:48	3:52	2:54	2:19	1:56