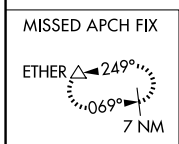
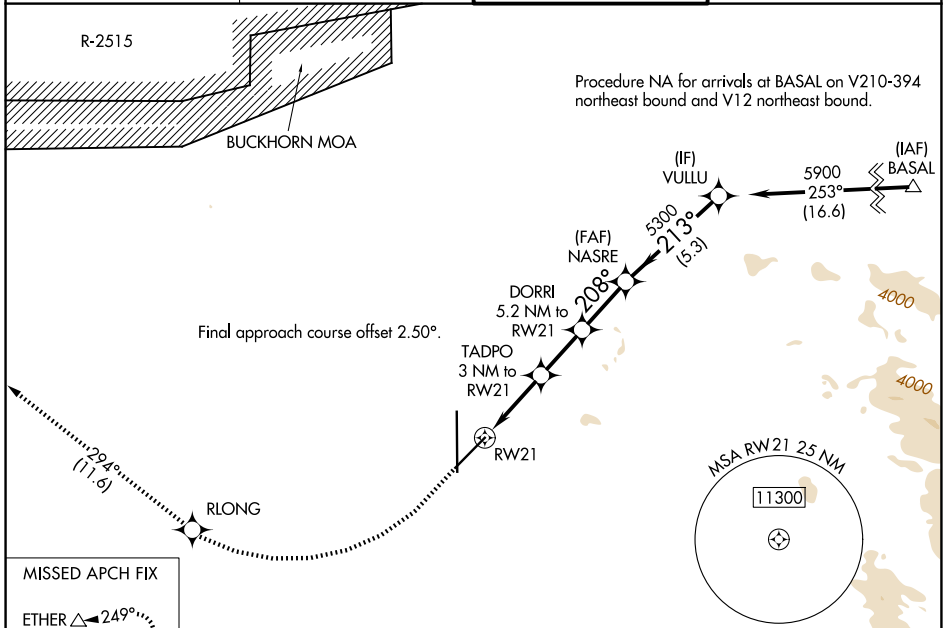


WAAS CH <b>82246</b> <b>W21A</b>	APP CRS <b>208°</b>	Rwy Ldg TDZE Apt Elev	<b>9138</b> <b>2858</b> <b>2885</b>
--	------------------------	-----------------------------	---

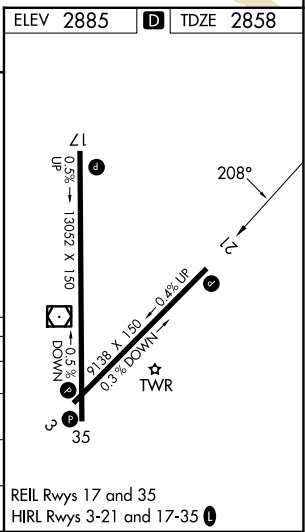
# RNAV (GPS) RWY 21

SOUTHERN CALIFORNIA LOGISTICS (V CV)

RNP APCH - GPS.		MISSED APPROACH: Climb to 3500 then climbing right turn to 6000 direct RLONG and on track 294° to ETHER and hold.	
⚠ Cirdling NA for C and D southeast of Rws 35 and 21.			
⚠ For uncompensated Baro-VNAV systems, LNAV/VNAV NA below -20°C or above 54°C.			
ATIS <b>135.475</b>	JOSHUA APP CON <b>124.55 363.0</b>	VICTORVILLE TOWER * <b>118.35 (CTAF) 282.225</b>	GND CON <b>124.45</b>



3500	6000	RLONG	tr 294°	ETHER	VGSI and RNAV glidepath not coincident (VGSI Angle 3.00/TCH 85).	
					NASRE	VULLU
					5300	5900
					208°	213°
					4560	5300
					3860	GP 3.00° TCH 60
					1.7 NM to RW21	3 NM to RW21
					5.2 NM to RW21	5.3 NM
					1.7 NM	1.3 NM
					2.2 NM	2.3 NM
					C	D
CATEGORY	A	B	C	D		
LPV DA	3108-1		250 (300-1)			
LNAV/VNAV DA	3153-1		295 (300-1)			
LNAV MDA	3480-1	622 (600-1)	3480-1¾	622 (600-1¾)		
CIRCLING	3480-1	595 (600-1)	3480-1¾	3760-2¾	875 (900-2¾)	



SW-3, 11 JUN 2026 to 09 JUL 2026

SW-3, 11 JUN 2026 to 09 JUL 2026