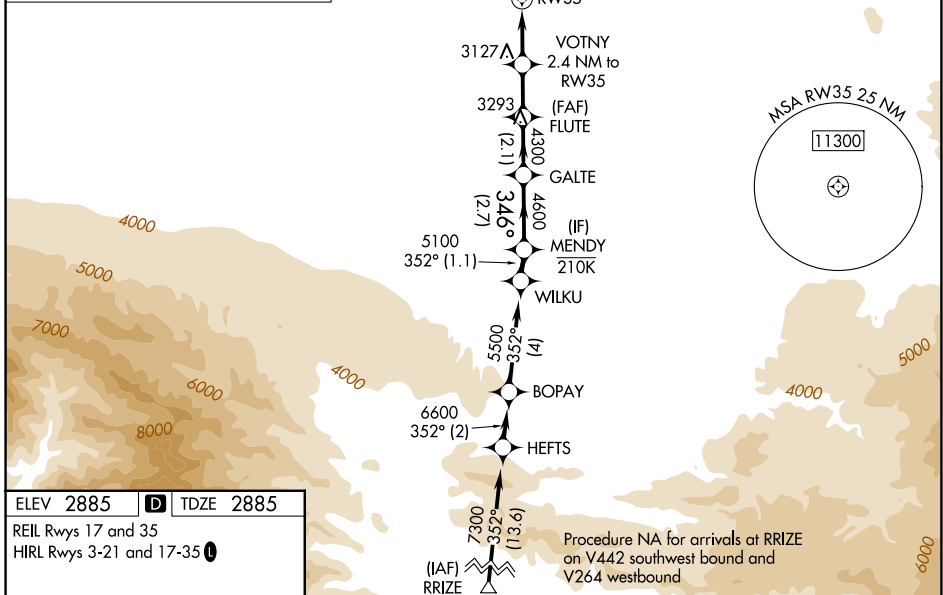
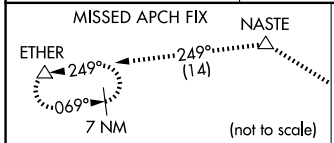


WAAS CH <b>97746</b> <b>W35A</b>	APP CRS <b>346°</b>	Rwy Ldg TDZE <b>2885</b> Apt Elev <b>2885</b>	<b>13052</b> <b>2885</b> <b>2885</b>
--	------------------------	---	--

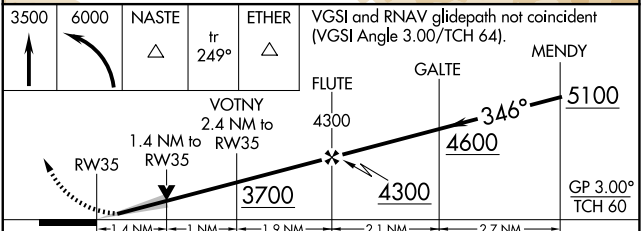
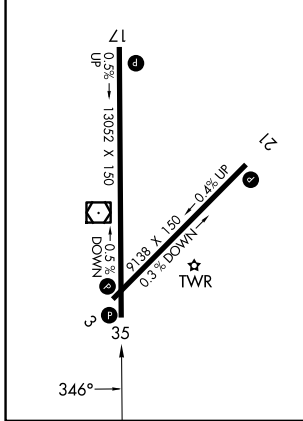
# RNAV (GPS) RWY 35

SOUTHERN CALIFORNIA LOGISTICS (V<sub>C</sub>V)

RNP APCH - GPS.		MISSED APPROACH: Climb to 3500 then climbing left turn to 6000 direct NASTE and on track 249° to ETHER and hold.	
<p><b>⚠</b> Circling NA for C and D southeast of Rws 35 and 21. <b>⚠</b> For uncompensated Baro-VNAV systems, LNAV/VNAV NA below -20°C or above 54°C.</p>	<p>ATIS <b>135,475</b></p>	<p>JOSHUA APP CON <b>124.55 363.0</b></p>	<p>VICTORVILLE TOWER ★ <b>118.35(CTAF) 282.225</b></p>
		<p>GND CON <b>124.45</b></p>	



ELEV <b>2885</b>	<b>D</b>	TDZE <b>2885</b>
REIL Rws 17 and 35 HIRL Rws 3-21 and 17-35		



CATEGORY	A	B	C	D
LPV DA		3085-1	200 (200-1)	
LNAV/VNAV DA		3411-1½	526 (600-1½)	
LNAV MDA	3380-1	495 (500-1)	3380-1⅓	495 (500-1⅓)
CIRCLING	3380-1 495 (500-1)	3420-1 535 (600-1)	3460-1½ 575 (600-1½)	3760-2¾ 875 (900-2¾)

SW-3, 11 JUN 2026 to 09 JUL 2026

SW-3, 11 JUN 2026 to 09 JUL 2026