


VOR/DME P ^{UW} 117.15 Chan 118 (Y)	APP CRS 027°	Rwy Ldg TDZE Apt Elev 7100 2567 2567
---	------------------------	--

VOR RWY 5

PULLMAN/MOSCOW RGNL (PUW)

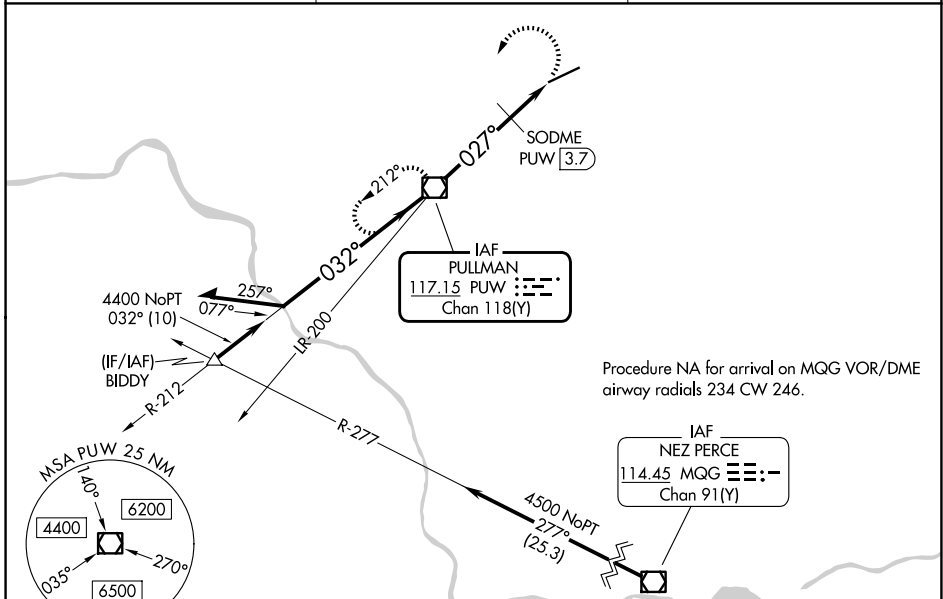
DME required.

▼ Procedure NA at night.
▲ Rwy 5 helicopter visibility reduction below 1 SM NA.
Inop table does not apply to S-5 and SODME fix minimums Cats A/B.
For inop ALS, increase S-5 SODME fix minimums Cat C/D visibility to 1 3/8 SM.

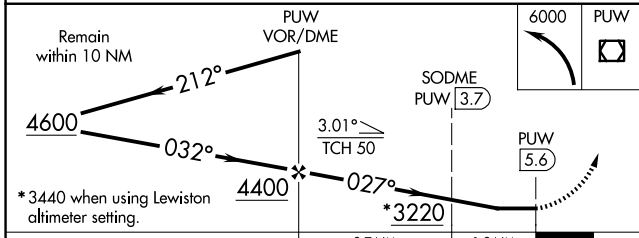
MALSR 

MISSED APPROACH: Climbing left turn to 6000 direct PUW VOR/DME and hold, continue climb-in-hold to 6000.

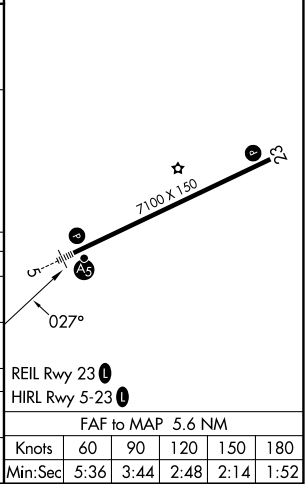
ASOS 135.675	SEATTLE CENTER 123.95 290.55	UNICOM 122.8 (CTAF) 
------------------------	--	---



ELEV 2567		TDZE 2567
-----------	---	-----------



CATEGORY	A	B	C	D
S-5	3220/50	653 (700-1)	3220-1 3/8	653 (700-1 3/8)
CIRCLING	3220-1	653 (700-1)	3220-1 7/8	3420-2 3/4 653 (700-1 7/8) 853 (900-2 3/4)
SODME FIX MINIMUMS				
S-5	3040/50 473 (500-1)			
CIRCLING	3080-1 513 (600-1)	3120-1 553 (600-1)	3140-1 1/2 573 (600-1 1/2)	3420-2 3/4 853 (900-2 3/4)



NW-1, 11 JUN 2026 to 09 JUL 2026

NW-1, 11 JUN 2026 to 09 JUL 2026