

# HI-TACAN Z RWY 24R

TACAN NKX Chan <b>33</b>	APCH CRS <b>247°</b>	Rwy Idg TDZE Arpt Elev	24R <b>12,000</b> 24L <b>8001</b>	475 24L <b>477</b>
-----------------------------	-------------------------	------------------------------	-----------------------------------	--------------------

[USN]

MIRAMAR MCAS (JOE FOSS FLD) (KNKX)

\*When ALS inop, increase CAT CDE vis to 1½ miles.  
 \*\* CAT E circling not authorized S of Rwy 6R-24L.

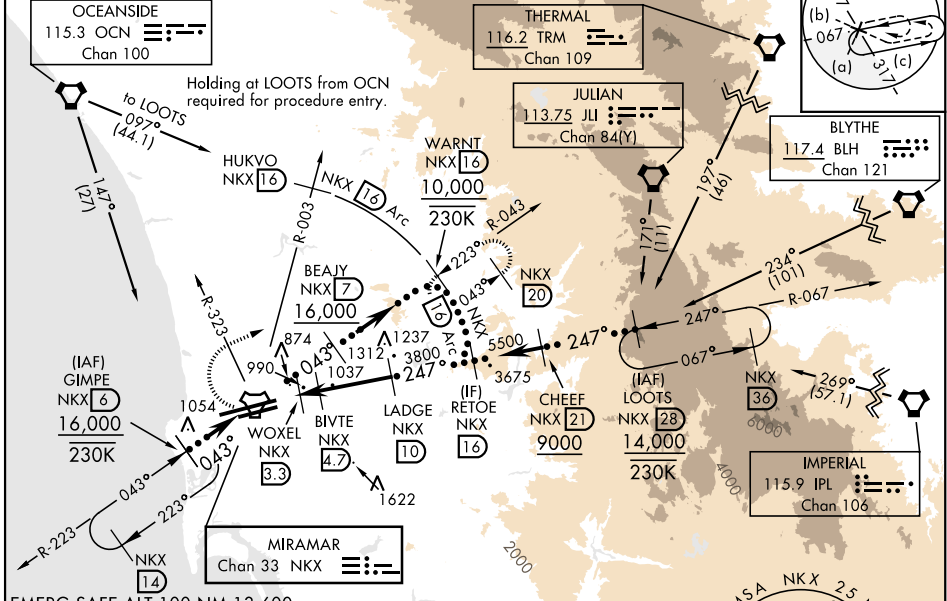


MISSED APPROACH: Climb to 1500, then climbing right turn to 7000 via NKX TACAN R-003 to HUKVO. Arc NE of NKX via 16 mile arc to WARNT and hold. Cross R-323 at 3000 mandatory, cross HUKVO at 6000 mandatory.

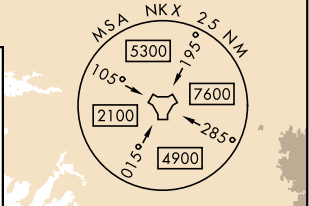
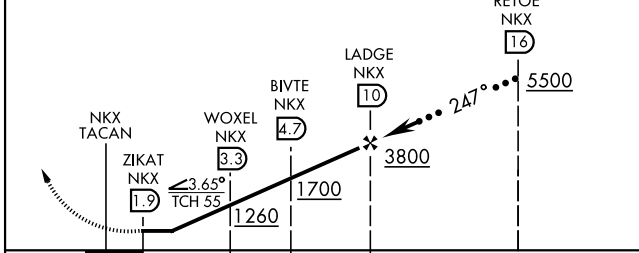
ATIS ★ <b>133.475 352.0</b>	SOCAL APP CON <b>132.2 269.1</b>	FOSS TOWER ★ <b>135.2 298.925 0</b>	GND CON <b>128.625 307.325</b>	LA CENTER <b>291.7</b>	ASR/ PAR
--------------------------------	-------------------------------------	--	-----------------------------------	---------------------------	-------------

Knots	60	120	180	240	300	360
V/V(ftm)	275	550	825	1100	1375	1650

ATC climb of 275 ft/NM to 6000

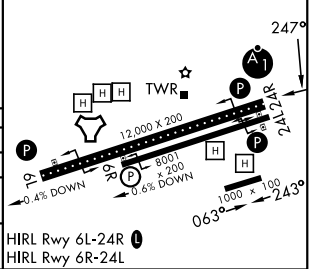


EMERG SAFE ALT 100 NM 13,600



CATEGORY	C	D	E
S-24R *	1140-1½	665	(700-1½)
SIDESTEP 24L	1140-1⅞ 663 (700-1⅞)	1140-2 663 (700-2)	1140-2¼ 663 (700-2¼)
CIRCLING**	1140-1⅞ 663 (700-1⅞)	1180-2¼ 703 (800-2¼)	1360-3 883 (900-3)

ELEV 477	TDZE 24R 475
	TDZE 24L 477



# HI-TACAN Z RWY 24R

SW-3, 11 JUN 2026 to 09 JUL 2026

SW-3, 11 JUN 2026 to 09 JUL 2026