

SAN DIEGO, CALIFORNIA

# ILS Y or LOC/DME Y RWY 24R

LOC/DME I-NKX <b>111.15</b> Chan <b>48(Y)</b>	APCH CRS <b>243°</b>	Rwy Ldg <b>8001</b>	24L <b>12,000</b>	24R <b>475</b>
		TDZE <b>477</b>		
		Arpt Elev <b>477</b>		

[USN]

MIRAMAR MCAS (JOE FOSS FLD) (KNKX)

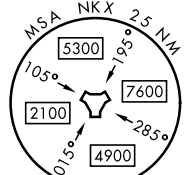
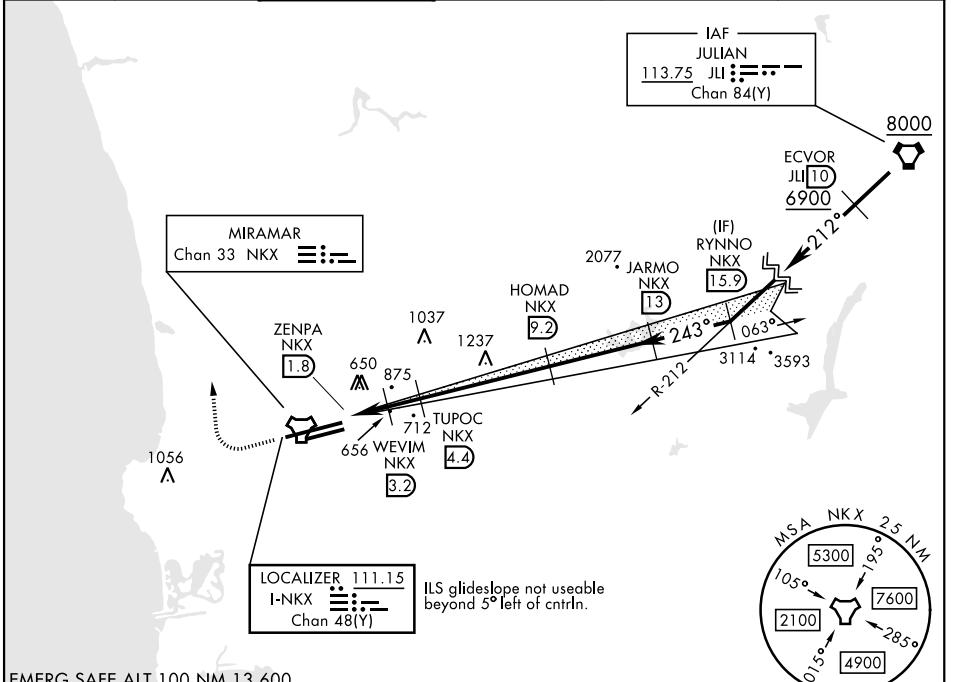
TACAN or RADAR required

- \* When ALS inop, increase vis to 3/4 mile.
- \*\* When ALS inop, increase CAT AB vis to 1 mile, CAT CDE vis to 1 1/2 miles.
- \*\*\* CAT E circling not authorized S of Rwy 6R-24L.

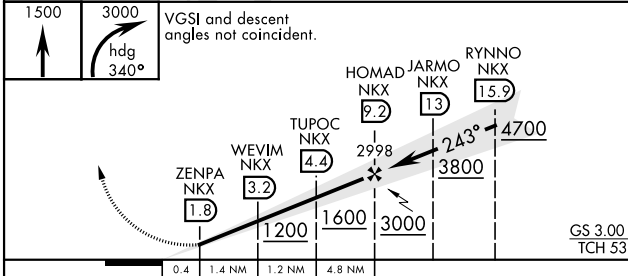


MISSED APPROACH: Climb to 1500, then climbing right turn to 3000 via heading 340°. Expect radar vectors.

ATIS * <b>133.475</b> <b>352.0</b>	SOCAL APP CON <b>132.2</b> <b>269.1</b>	FOSS TOWER * <b>135.2</b> <b>298.925</b>	GND CON <b>128.625</b> <b>307.325</b>	LA CENTER <b>291.7</b>	ASR/ PAR
--	---	--	---	---------------------------	-------------

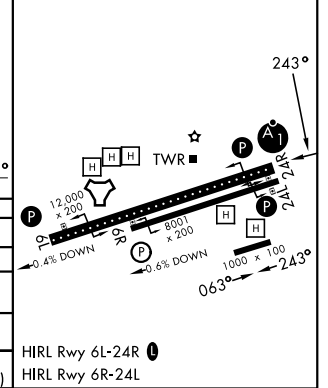


EMERG SAFE ALT 100 NM 13,600



ELEV 477	TDZE 24L 477
	TDZE 24R 475

CATEGORY	A	B	C	D	E
S-ILS 24R*	675 - 1/2		200	(200-1/2)	
S-LOC 24R**	920 - 1/2	445 (500-1/2)	920 - 7/8	445 (500 - 7/8)	
SIDESTEP 24L	920-1	443 (500-1)	920-1 1/2 443 (500-1 1/2)	920-2 443 (500-2)	
CIRCLING***	940-1 463 (500-1)	960-1 483 (500-1)	960-1 1/2 483 (500-1 1/2)	1180-2 1/4 703 (800-2 1/4)	1360-3 883 (900-3)



SAN DIEGO, CALIFORNIA

32°52'N-117°09'W

MIRAMAR MCAS (JOE FOSS FLD) (KNKX)

Orig 14JUL22

# ILS Y or LOC/DME Y RWY 24R

SW-3, 11 JUN 2026 to 09 JUL 2026

SW-3, 11 JUN 2026 to 09 JUL 2026