

SAN DIEGO, CALIFORNIA

ILS Z or LOC/DME Z RWY 24R

LOC/DME I-NKX 111.15 Chan 48(Y)	APCH CRS 243°	Rwy Ldg 8001	24L 24R 12,000
		TDZE 477	475
		Arpt Elev 477	477

[USN]

MIRAMAR MCAS (JOE FOSS FLD) (KNKX)

DME and RADAR required

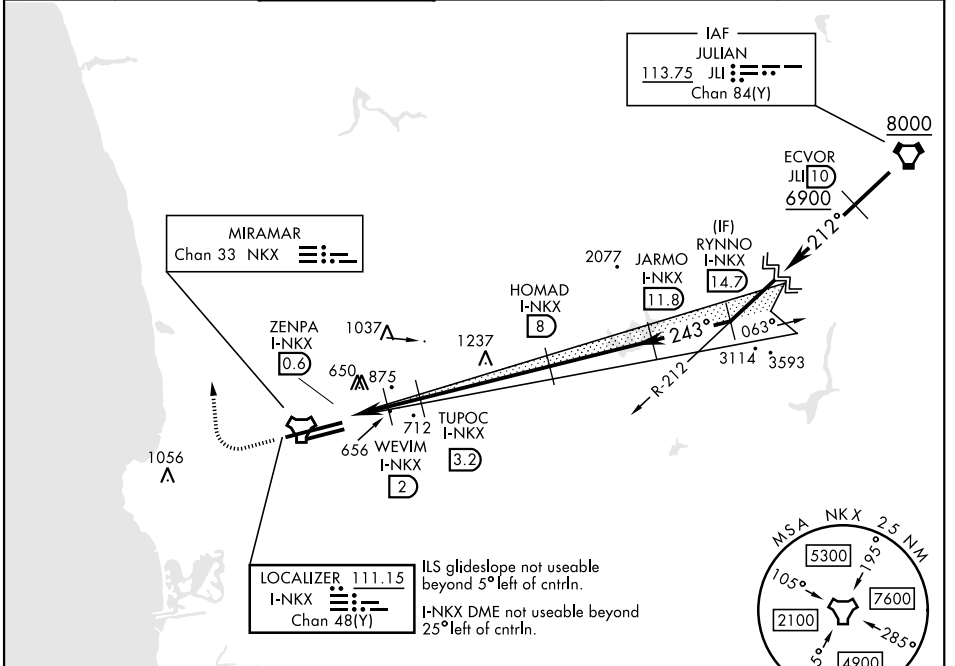
ALSF-1



MISSED APPROACH: Climb to 1500, then climbing right turn to 3000 via heading 340°. Expect radar vectors.

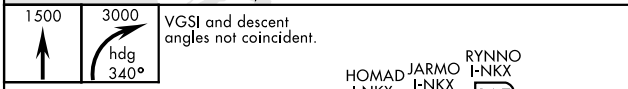
- * When ALS inop, increase vis to 3/4 mile.
- ** When ALS inop, increase CAT AB vis to 1 mile, CAT CDE vis to 1 1/2 miles.
- *** CAT E circling not authorized S of Rwy 6R-24L.

ATIS ★ 133.475 352.0	SOCAL APP CON 132.2 269.1	FOSS TOWER ★ 135.2 298.925	GND CON 128.625 307.325	LA CENTER 291.7	ASR/ PAR
------------------------------------------	-----------------------------------------------	------------------------------------------------	---------------------------------------------	---------------------------	-------------

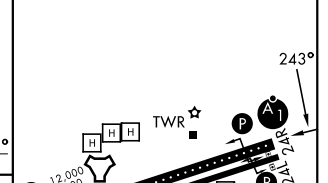
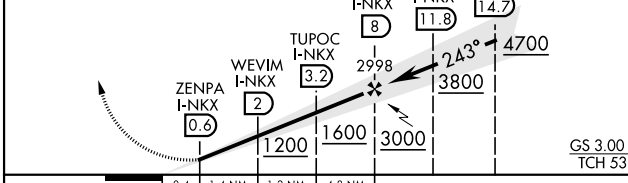


ILS glideslope not useable beyond 5° left of cntrln.
I-NKX DME not useable beyond 25° left of cntrln.

EMERG SAFE ALT 100 NM 13,600



ELEV 477	TDZE 24L 477
	TDZE 24R 475



CATEGORY	A	B	C	D	E
S-ILS 24R*	675 - 1/2		200	(200-1/2)	
S-LOC 24R**	920-1/2	445 (500-1/2)	920-7/8	445 (500-7/8)	
SIDESTEP 24L	920-1	443 (500-1)	920-1 1/2 443 (500-1 1/2)	920-2 443 (500-2)	
CIRCLING***	940-1 463 (500-1)	960-1 483 (500-1)	960-1 1/2 483 (500-1 1/2)	1180-2 1/4 703 (800-2 1/4)	1360-3 883 (900-3)

HIRL Rwy 6L-24R
HIRL Rwy 6R-24L

SAN DIEGO, CALIFORNIA

32°52'N-117°09'W

MIRAMAR MCAS (JOE FOSS FLD) (KNKX)

Amdt 1 29DEC22

ILS Z or LOC/DME Z RWY 24R

SW-3, 11 JUN 2026 to 09 JUL 2026

SW-3, 11 JUN 2026 to 09 JUL 2026