

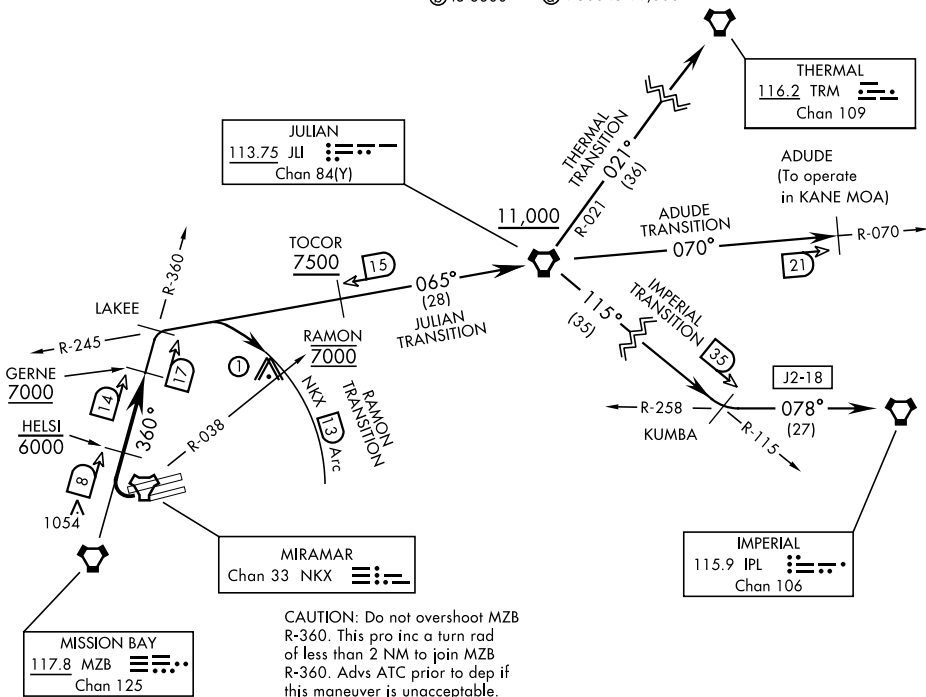
# LAKEE-THREE DEPARTURE (LAKEE3.LAKEE)

SAN DIEGO, CALIFORNIA

ATIS ★ 133.475 352.0 [USN]  
 FOSS TOWER ★  
 135.2 298.925  
 SOCAL DEP CON  
 132.2 269.1 E

| Rwy          | Knots    | 60  | 120  | 180  | 240  | 300  | 360  |
|--------------|----------|-----|------|------|------|------|------|
| * 24L/R (a)  | V/V(fpm) | 260 | 520  | 780  | 1040 | 1300 | 1560 |
| ** 24L/R (b) | V/V(fpm) | 280 | 560  | 840  | 1120 | 1400 | 1680 |
| † 24L/R (c)  | V/V(fpm) | 678 | 1356 | 2034 | 2712 | 3390 | 4068 |
| ‡ 24L/R (d)  | V/V(fpm) | 235 | 470  | 705  | 940  | 1175 | 1410 |

\* Military Minimum    \*\* Civil Minimum    † ATC Climb Rate  
 (a) to 3600    (c) to 7000  
 (b) to 3800    (d) 7500 to 11,000



SW-3, 11 JUN 2026 to 09 JUL 2026

SW-3, 11 JUN 2026 to 09 JUL 2026

EMERG SAFE ALT 100 NM 13,600

① 3018' Twr 12.5 NM from DER.

**DEPARTURE ROUTE DESCRIPTION**

**TAKEOFF RWY 24L/R:** Turn right to intercept and proceed via MZB VORTAC R-360 to LAKEE INT. Cross HELSI at or below 6000. Cross GERNE at or above 7000. Thence...

**ADUDE TRANSITION (LAKEE3 • ADUDE):** ...Via JLI VORTAC R-245 to JLI. Then via JLI R-070 to ADUDE. Cross TOCOR at or above 7500. Cross JLI VORTAC at or above 11,000. (To operate in KANE MOA.)

**IMPERIAL TRANSITION (LAKEE3 • IPL):** ...Via JLI VORTAC R-245 to JLI. Then via JLI R-115 to KUMBA INT, then via IPL VORTAC R-258 to IPL. Cross TOCOR at or above 7500. Cross JLI VORTAC at or above 11,000.

(CONTINUED ON FOLLOWING PAGE)

# LAKEE-THREE DEPARTURE (LAKEE3.LAKEE)

SAN DIEGO, CALIFORNIA

# LAKEE-THREE DEPARTURE (LAKEE3.LAKEE)

[USN]

## DEPARTURE ROUTE DESCRIPTION

JULIAN TRANSITION (LAKEE3·JLI): ...Via JLI VORTAC R-245 to JLI. Cross TOCOR at or above 7500. Cross JLI VORTAC at or above 11,000.

RAMON TRANSITION (LAKEE3·RAMON): ...Via JLI VORTAC R-245 to NKX TACAN 13 DME. Then arc NE of NKX via the 13 DME arc to RAMON. Cross RAMON at 7000 mandatory.

THERMAL TRANSITION (LAKEE3·TRM): ..Via JLI VORTAC R-245 to JLI. Then via JLI R-021 to TRM VORTAC. Cross TOCOR at or above 7500. Cross JLI VORTAC at or above 11,000.

SW-3, 11 JUN 2026 to 09 JUL 2026

SW-3, 11 JUN 2026 to 09 JUL 2026