

RNAV (GPS) RWY 24R

WAAS CH 61450 W24B	APCH CRS 243°	Rwy Idg 12,000 TDZE 475 Arpt Elev 477
--------------------------	------------------	---

[USN]

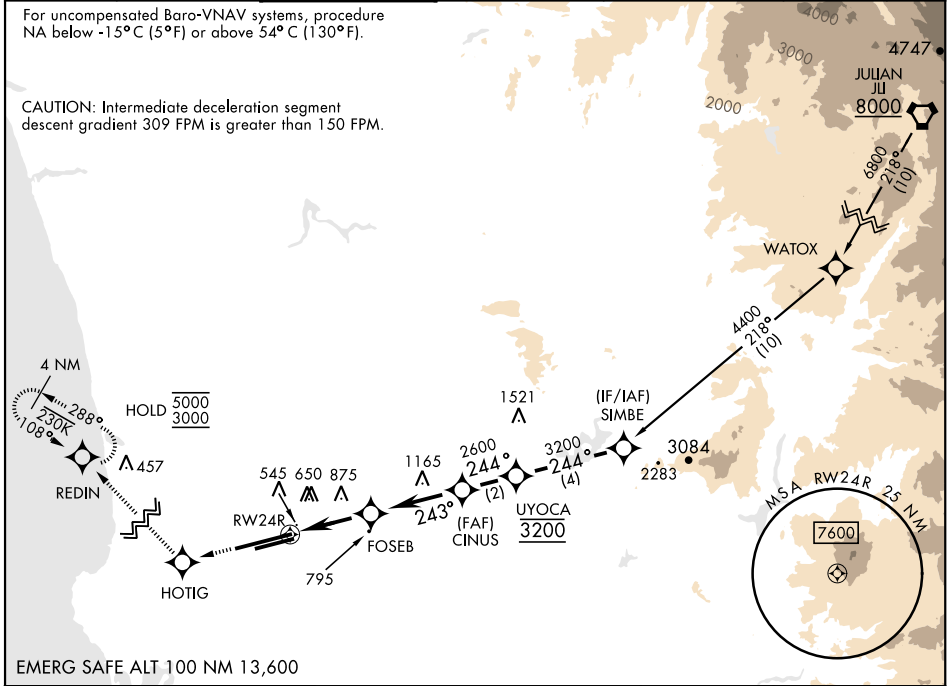
MIRAMAR MCAS (JOE FOSS FLD) (KNKX)

RNP APCH ▼ ** When ALS inop, increase vis to 3/4 mile. *** When ALS inop, increase vis to 1 mile, CAT CD vis to 1 3/4 miles.	ALSF-1 	MISSED APPROACH: Climb to 3000 direct HOTIG, 288° track to REDIN and hold.
--	------------	--

ATIS ★ 352.0 133.475	SOCAL APP CON 132.2 269.1	FOSS TOWER ★ 135.2 298.925	GND CON 128.625 307.325	CLNC DEL 125.975 254.325	LA CENTER 291.7	ASR/ PAR
----------------------------	---------------------------------	----------------------------------	-------------------------------	--------------------------------	--------------------	-------------

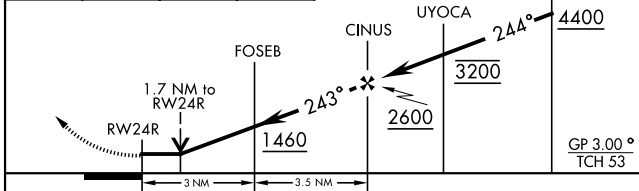
For uncompensated Baro-VNAV systems, procedure NA below -15°C (5°F) or above 54°C (130°F).

CAUTION: Intermediate deceleration segment descent gradient 309 FPM is greater than 150 FPM.

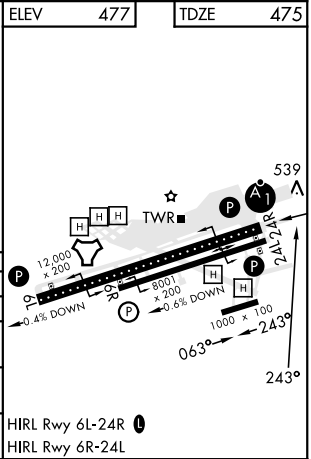


EMERG SAFE ALT 100 NM 13,600

3000 ↑	HOTIG 	REDIN 	tr 288°	VGSI and RNAV glidepath not coincident (VGSI Angle 3.00/TCH 57).	ELEV 477	TDZE 475
-----------	-----------	-----------	---------	--	----------	----------



CATEGORY	A	B	C	D
LPV DA *		675-1/2	200	(200-1/2)
LNNAV/VNAV DA **		725-1/2	250	(300-1/2)
LNNAV ***	1060-1/2	585 (600-1/2)	1060-1 1/4	585 (600-1 1/4)
CIRCLING	1060-1	583 (600-1)	1060-1 3/4	583 (600-1 3/4)
			1180-2 1/4	703 (800-2 1/4)



RNAV (GPS) RWY 24R

SW-3, 11 JUN 2026 to 09 JUL 2026

SW-3, 11 JUN 2026 to 09 JUL 2026