

TACAN Y RWY 24R

| | | | |
|-----------------------------|-------------------------|--|-----------------------------------|
| TACAN NKX Chan 33 | APCH CRS 247° | Rwy ldg TDZE 24R 12,000 24L 475 Arprt Elev 477 | 24L 8001 24L 477 |
|-----------------------------|-------------------------|--|-----------------------------------|

[USN]

MIRAMAR MCAS (JOE FOSS FLD) (KNKX)

▲ * When ALS inop, increase CAT AB vis to 1 mile, CAT CD to 1 7/8 miles.

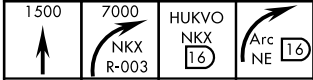
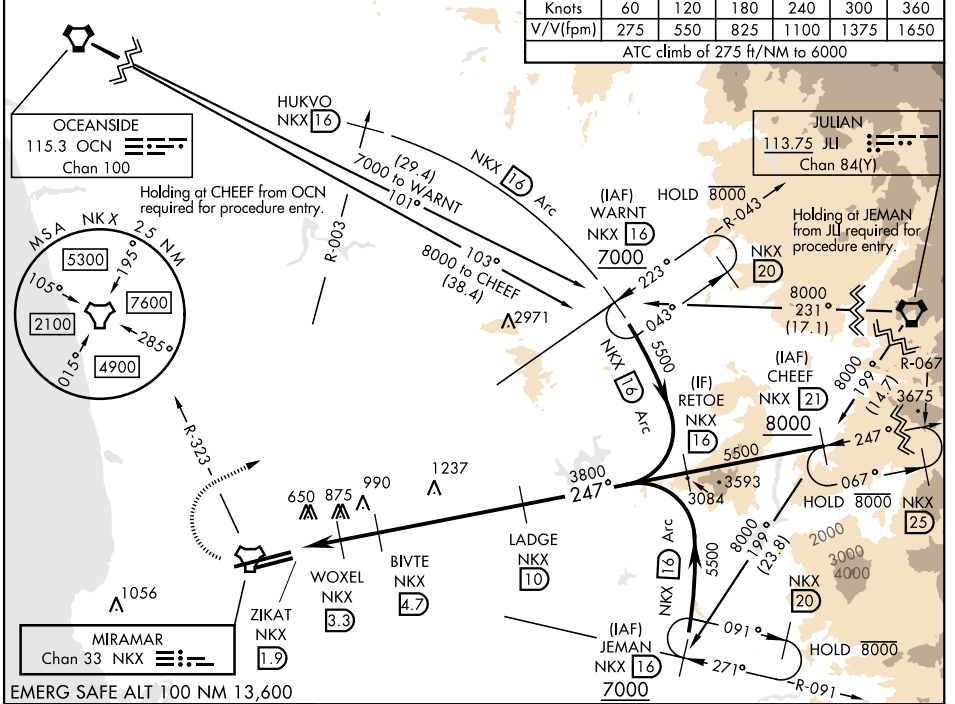
ALSF-1
▲1

MISSED APPROACH: Climb to 1500, then climbing right turn to 7000 via NKX TACAN R-003 to HUKVO. Arc NE of NKX via the 16 mile arc to WARNT and hold. Cross NKX R-323 at 3000 mandatory, cross HUKVO at 6000 mandatory.

| | | | | | |
|--|---|--|---|---------------------------|---|
| ATIS ★ 133.475 352.0 | SOCAL APP CON 132.2 269.1 | FOSS TOWER ★ 135.2 298.925 | GND CON 128.625 307.325 | LA CENTER 291.7 | ASR/ PAR 1375 1650 |
|--|---|--|---|---------------------------|---|

| | | | | | | |
|----------|-----|-----|-----|------|------|------|
| Knots | 60 | 120 | 180 | 240 | 300 | 360 |
| V/V(fpm) | 275 | 550 | 825 | 1100 | 1375 | 1650 |

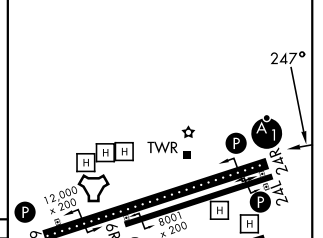
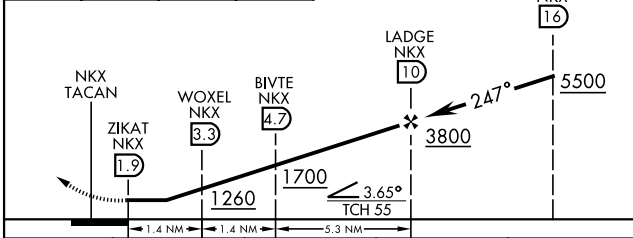
ATC climb of 275 ft/NM to 6000



EMERG SAFE ALT 100 NM 13,600

VGSI and descent angles not coincident.

| | |
|----------|-----|
| ELEV | 477 |
| TDZE 24R | 475 |
| TDZE 24L | 477 |



| CATEGORY | A | B | C | D |
|---------------|----------|---------------|-----------------|-----------------|
| S-24R * | 1140-1/2 | 665 (700-1/2) | 1140-1 1/2 | 665 (700-1 1/2) |
| SIDE-STEP 24L | 1140-1 | 663 (700-1) | 1140-1 7/8 | 1140-2 |
| | | | 663 (700-1 7/8) | 663 (700-2) |
| CIRCLING | 1140-1 | 663 (700-1) | 1140-1 7/8 | 1180-2 1/4 |
| | | | 663 (700-1 7/8) | 703 (800-2 1/4) |

HIRL Rwy 6L-24R
HIRL Rwy 6R-24L

TACAN Y RWY 24R

SW-3, 11 JUN 2026 to 09 JUL 2026

SW-3, 11 JUN 2026 to 09 JUL 2026