

RIDGECREST, CALIFORNIA

# RNAV (GPS) RWY 03

APCH CRS	Rwy Idg	<b>10,000</b>
<b>028°</b>	TDZE	<b>2284</b>
	Arprt Elev	<b>2288</b>

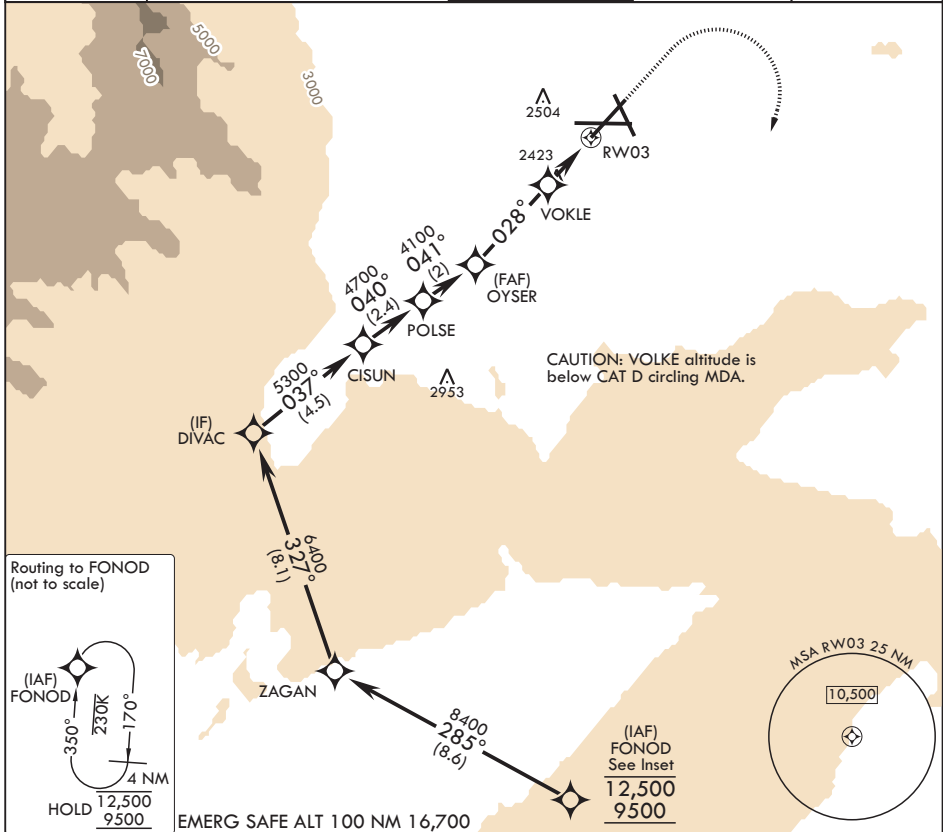
- (USN)

CHINA LAKE NAWS (ARMITAGE FLD) (KNID)

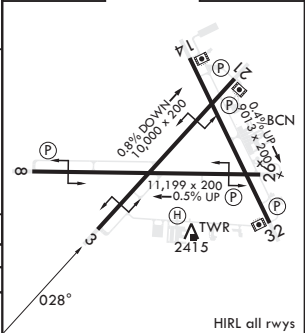
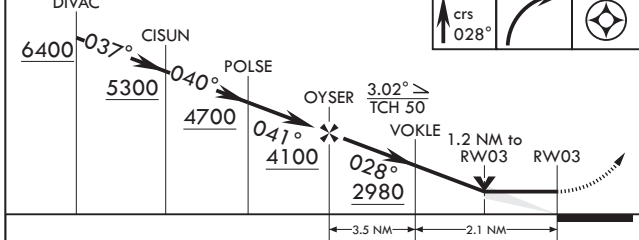
RNP APCH-GPS

MISSED APPROACH: (Do not exceed 185 KIAS until initial turn completion.) Climb to 3600 then climbing right turn to 9500 direct FONOD and hold, continue climb-in-hold to 9500.

ATIS★ <b>322.375</b>	JOSHUA APP CON/DEP CON <b>133.65 348.7</b>	TOWER★ <b>120.15 340.2</b>	GND CON <b>350.3</b>	CLNC DEL <b>254.25</b>
-------------------------	---	-------------------------------	-------------------------	---------------------------



DIVAC	3600	9500	FONOD	ELEV 2288	TDZE 2284
-------	------	------	-------	-----------	-----------



CATEGORY	A	B	C	D
LNAV MDA	2720-1 436 (500-1)	2720-1¼ 436 (500-1¼)	2720-1½ 436 (500-1½)	3700-3 1416 (1500-3)
CIRCLING	2780-1 496 (500-1)	2820-1 536 (600-1)	2820-1½ 536 (600-1½)	3700-3 1416 (1500-3)

RIDGECREST, CALIFORNIA

35°41'N - 117°42'W

CHINA LAKE NAWS (ARMITAGE FLD) (KNID)

Amdt 1 12JUN25

# RNAV (GPS) RWY 03

SW-3, 11 JUN 2026 to 09 JUL 2026

SW-3, 11 JUN 2026 to 09 JUL 2026