

RIDGECREST, CALIFORNIA

RNAV (GPS) RWY 32

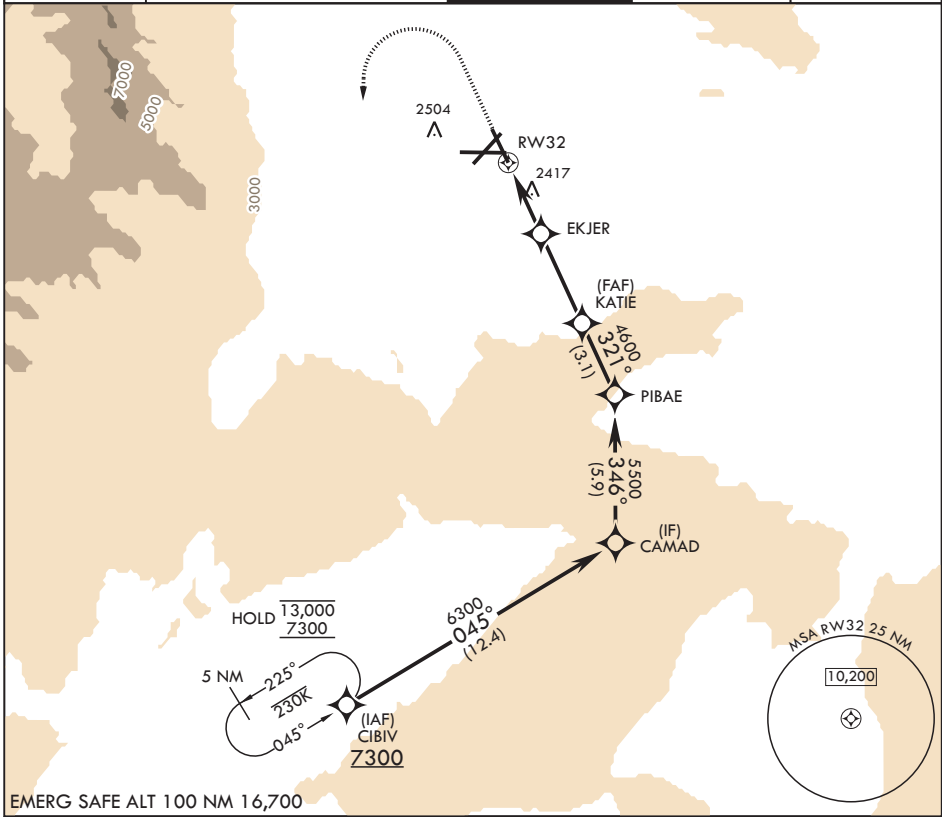
APCH CRS 321°	Rwy Idg 9013
	TDZE 2241
	Arprt Elev 2288

- (USN)

CHINA LAKE NAWS (ARMITAGE FLD) (KNID)

RNP APCH-GPS	MISSED APPROACH: (Do not exceed 225 KIAS until initial turn completion) Climb to 3800 then climbing left turn to 7300 direct CIBIV and hold.
RADAR required	

ATIS★ 322.375	JOSHUA APP CON/DEP CON 133.65 348.7	TOWER★ 120.15 340.2	GND CON 350.3	CLNC DEL 254.25
-------------------------	---	-------------------------------	-------------------------	---------------------------

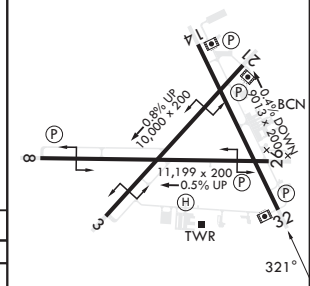
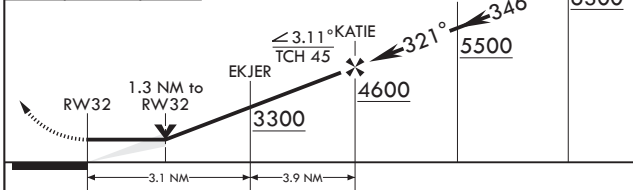


EMERG SAFE ALT 100 NM 16,700

3800
 7300
 CIBIV

VGS1 and Descent
 Angle not coincident
 (VGS1 3.00/TCH 50).

ELEV 2288	TDZE 2241
-----------	-----------



CATEGORY	A	B	C	D
LNAV MDA	2700-1	459 (500-1)	2700-1½	459 (500-1½)
◻ CIRCLING	2780-1 496 (500-1)	2820-1 536 (600-1)	2820-1½ 536 (600-1½)	3700-3 1416 (1500-3)

HIRL all rwys

RIDGECREST, CALIFORNIA

35°41'N - 117°42'W

CHINA LAKE NAWS (ARMITAGE FLD) (KNID)

Amdt 6 12JUN25

RNAV (GPS) RWY 32

SW-3, 11 JUN 2026 to 09 JUL 2026

SW-3, 11 JUN 2026 to 09 JUL 2026