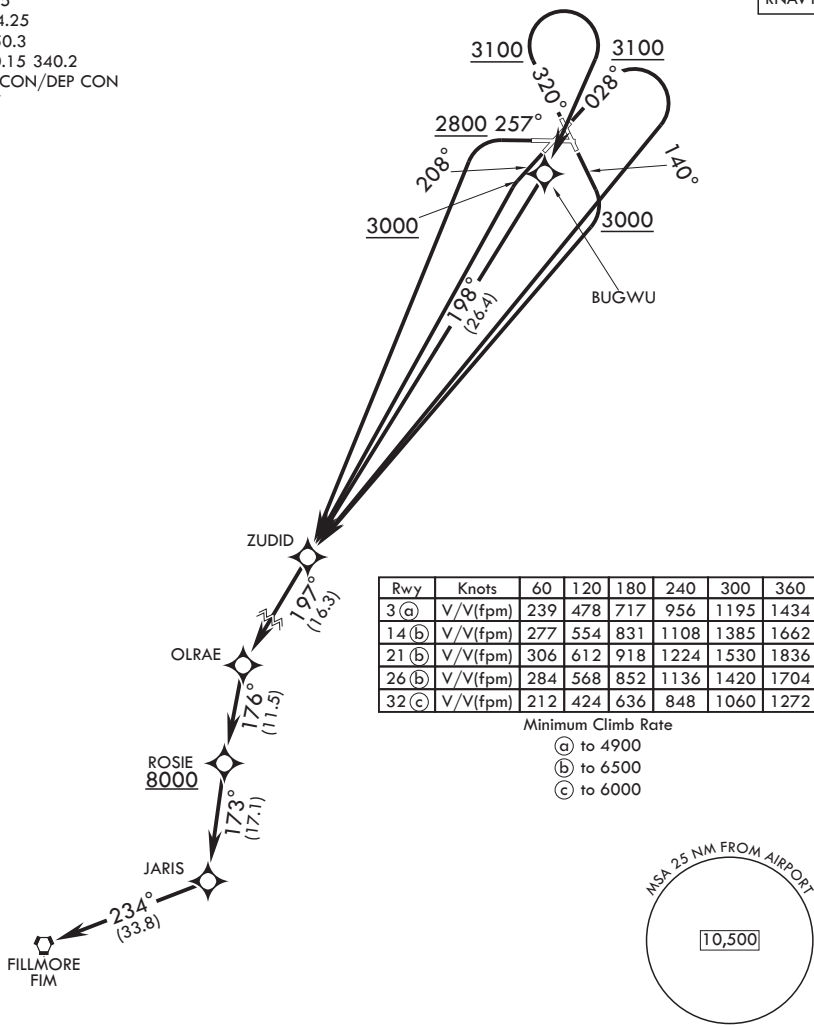


ATIS * 322.375
 CLNC DEL 254.25
 GND CON 350.3
 TOWER * 120.15 340.2
 JOSHUA APP CON/DEP CON
 133.65 348.7



SW-3, 11 JUN 2026 to 09 JUL 2026

SW-3, 11 JUN 2026 to 09 JUL 2026

DEPARTURE ROUTE DESCRIPTION

- TAKEOFF RWY 3:** Climb heading 028° to 3100, then climbing right turn direct ZUDID. Thence...
- TAKEOFF RWY 14:** Climb heading 140° to 3000, then climbing right turn direct ZUDID. Thence...
- TAKEOFF RWY 21:** Climb heading 208° to 3000, then climbing left turn direct ZUDID. Thence...
- TAKEOFF RWY 26:** Climb heading 257° to 2800, then climbing left turn direct ZUDID. Thence...
- TAKEOFF RWY 32:** Climb heading 320° to 3100, then climbing right turn direct BUGWU, then direct ZUDID. Thence...

...from over ZUDID proceed via depicted route to FILLMORE VORTAC. Cross ROSIE at or above 8000 or as assigned.