

SALTD EIGHT DEPARTURE (SALTD8.SALTD)

[USN] RIDGECREST, CALIFORNIA

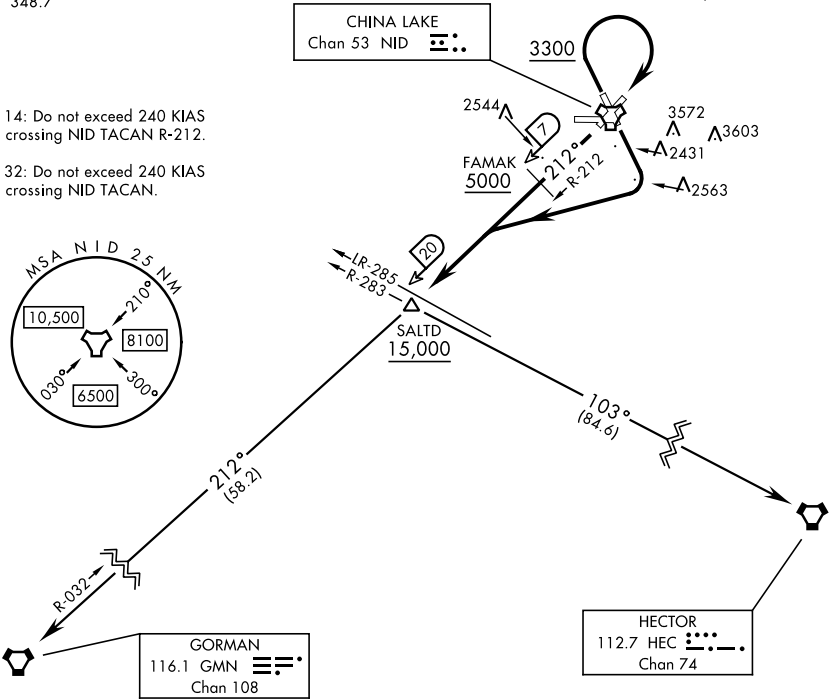
ATIS ★ 322.375
 CLNC DEL
 254.25
 GND CON
 350.3
 CHINA LAKE TOWER ★
 120.15 340.2
 JOSHUA DEP CON
 133.65 348.7

| Rwy | Knots | 60 | 120 | 180 | 240 | 300 | 360 |
|-----|----------|-----|------|------|------|------|------|
| *14 | V/V(fpm) | 232 | 464 | 696 | 928 | 1160 | 1392 |
| †14 | V/V(fpm) | 617 | 1234 | 1851 | 2468 | 3085 | 3702 |
| †21 | V/V(fpm) | 675 | 1350 | 2025 | 2700 | 3375 | 4050 |
| †32 | V/V(fpm) | 500 | 1000 | 1500 | 2000 | 2500 | 3000 |

* Minimum Climb Rate to 4000
 † ATC Climb Rate to 15,000

Rwy 14: Do not exceed 240 KIAS until crossing NID TACAN R-212.

Rwy 32: Do not exceed 240 KIAS until crossing NID TACAN.



SW-3, 11 JUN 2026 to 09 JUL 2026

SW-3, 11 JUN 2026 to 09 JUL 2026

DEPARTURE ROUTE DESCRIPTION

TAKEOFF RUNWAY 14: Climbing right turn to intercept NID TACAN R-212, then direct SALTD. From SALTD, proceed via assigned transition or RADAR vectors to join assigned route. Cross SALTD at or above 15,000. Thence...

TAKEOFF RUNWAY 21: Climb via NID TACAN R-212 to FAMA K, then direct SALTD. From SALTD, proceed via assigned transition or RADAR vectors to join assigned route. Cross FAMA K at or above 5,000 and cross SALTD at or above 15,000. Thence...

TAKEOFF RUNWAY 32: Climb via NID TACAN R-322 to 3300 then climbing right turn direct NID, then via NID R-212 to FAMA K, then direct SALTD. From SALTD, proceed via assigned transition or RADAR vectors to join assigned route. Cross FAMA K at or above 5000 and cross SALTD at or above 15,000. Thence...

GORMAN TRANSITION (SALTD8.GMN): Via GMN VORTAC R-032 to GMN.

HECTOR TRANSITION (SALTD8.HEC): Via HEC VORTAC R-283 to HEC.

SALTD EIGHT DEPARTURE (SALTD8.SALTD)

RIDGECREST, CALIFORNIA