

RIDGECREST, CALIFORNIA

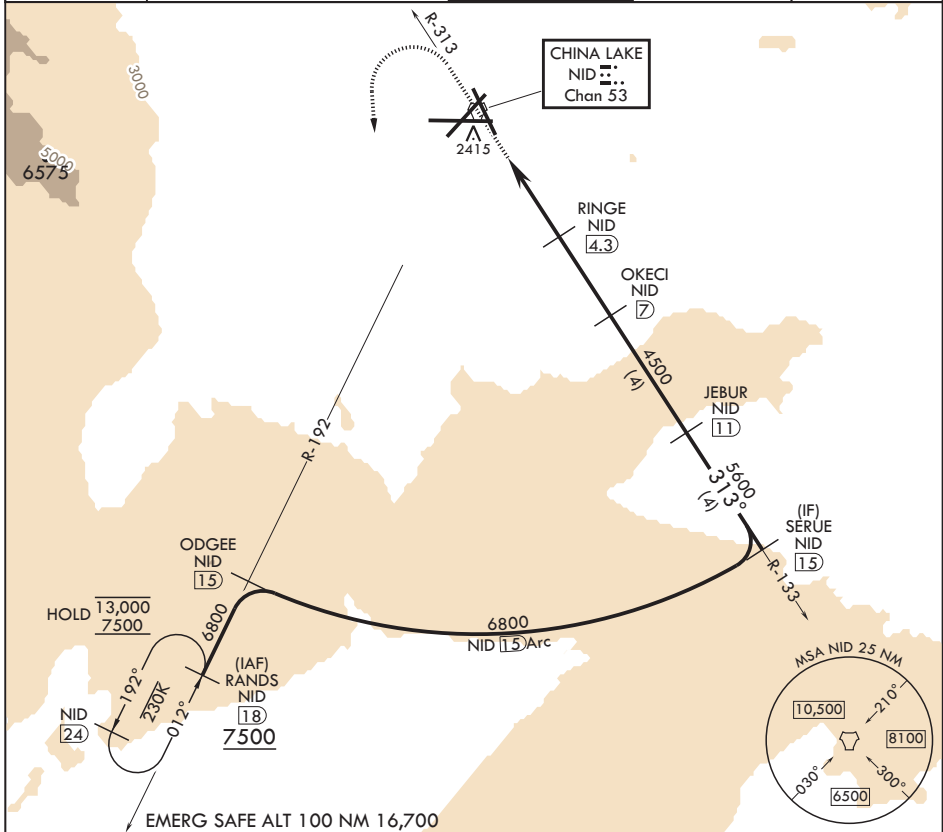
TACAN Y RWY 32

TACAN NID Chan 53	APCH CRS 313°	Rwy ldg TDZE Arprt Elev	9013 2241 2288
----------------------	------------------	-------------------------------	----------------------

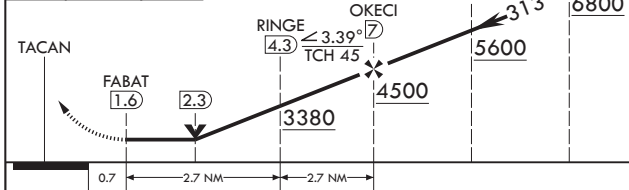
- (USN) CHINA LAKE NAWS (ARMITAGE FLD) (KNID)

RADAR required MISSED APPROACH: Climb to 3600, then climbing left turn to 7500 to intercept NID TACAN R-192 to RANDS and hold. Continue climb-in-hold to 7500.

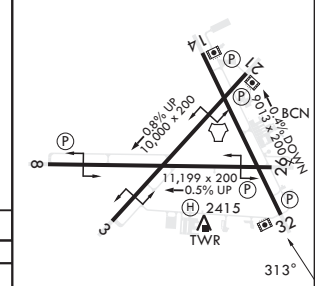
ATIS★ 322.375	JOSHUA APP CON/DEP CON 133.65 348.7	TOWER★ 120.15 340.2	GND CON 350.3	CLNC DEL 254.25
------------------	--	------------------------	------------------	--------------------



3600 ↑ NID R-192	7500 NID	RANDS NID 18	VGSI and Descent Angles not coincident (VGSI 3.00/TCH 50).	SERUE NID 15
------------------------	-------------	-----------------	--	-----------------



ELEV 2288	TDZE 2241
-----------	-----------



CATEGORY	A	B	C	D
S-32	2740-1	499 (500-1)	2740-1 1/8 499 (500-1%)	
CIRCLING	2780-1 496 (500-1)	2820-1 536 (600-1)	2820-1 1/2 536 (600-1 1/2)	3700-3 1416 (1500-3)

HIRL all rwys

RIDGECREST, CALIFORNIA

35°41'N - 117°42'W

CHINA LAKE NAWS (ARMITAGE FLD) (KNID)

Amdt 6 12JUN25

TACAN Y RWY 32

SW-3, 11 JUN 2026 to 09 JUL 2026

SW-3, 11 JUN 2026 to 09 JUL 2026