

OXNARD, CALIFORNIA

RNAV (GPS) RWY 21

(USN)

POINT MUGU NAS (NAVAL BASE VENTURA CO) (KNTD)

WAAS CH 95170 W21A	APCH CRS 212°	Rwy ldg TDZE Arprt Elev	11,102 13 13
---------------------------------	-------------------------	-------------------------------	---

RNP APCH



MISSED APPROACH: Climb to 2600 direct HALTU and hold.

- ▼ * When ALS inop, increase vis to 3/4 mile.
- ** When ALS inop, increase vis to 1 mile.
- *** When ALS inop, increase CAT AB vis to 1 mile; CAT CD vis to 1 1/8 miles.

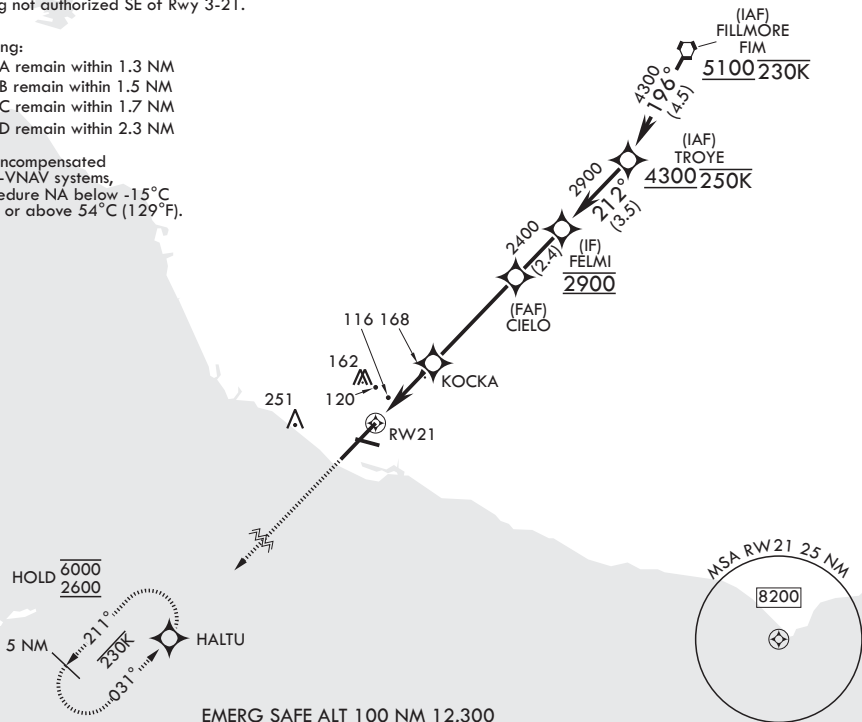
ATIS* 125.55 363.05	APP CON/DEP CON* 128.65 307.275	TOWER* 124.85 290.375	GND CON 121.6 360.2	ASR/PAR
-------------------------------	---	---------------------------------	-------------------------------	---------

† Circling not authorized SE of Rwy 3-21.

Circling:

- CAT A remain within 1.3 NM
- CAT B remain within 1.5 NM
- CAT C remain within 1.7 NM
- CAT D remain within 2.3 NM

For uncompensated Baro-VNAV systems, procedure NA below -15°C (5°F) or above 54°C (129°F).

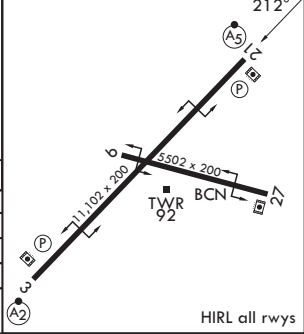
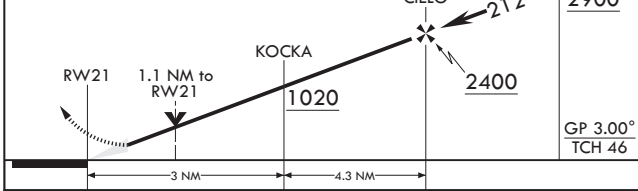


SW-3, 11 JUN 2026 to 09 JUL 2026

SW-3, 11 JUN 2026 to 09 JUL 2026

EMERG SAFE ALT 100 NM 12,300

2600 HALTU	FELMI	ELEV 13	TDZE 13
------------	-------	---------	---------



CATEGORY	A	B	C	D
LPV DA*	213-½	200	(200-½)	
LNAV/VNAV DA**	391-⅝	378	(400-⅝)	
LNAV MDA***	420-½	407 (500-½)	420-¾	407 (500-¾)
CIRCLING†	420-1 407 (500-1)	520-1 507 (600-1)	520-1½ 507 (600-1½)	580-2 567 (600-2)

OXNARD, CALIFORNIA

34°07'N - 119°07'W POINT MUGU NAS (NAVAL BASE VENTURA CO) (KNTD)

Amdt 9 27NOV25

RNAV (GPS) RWY 21