

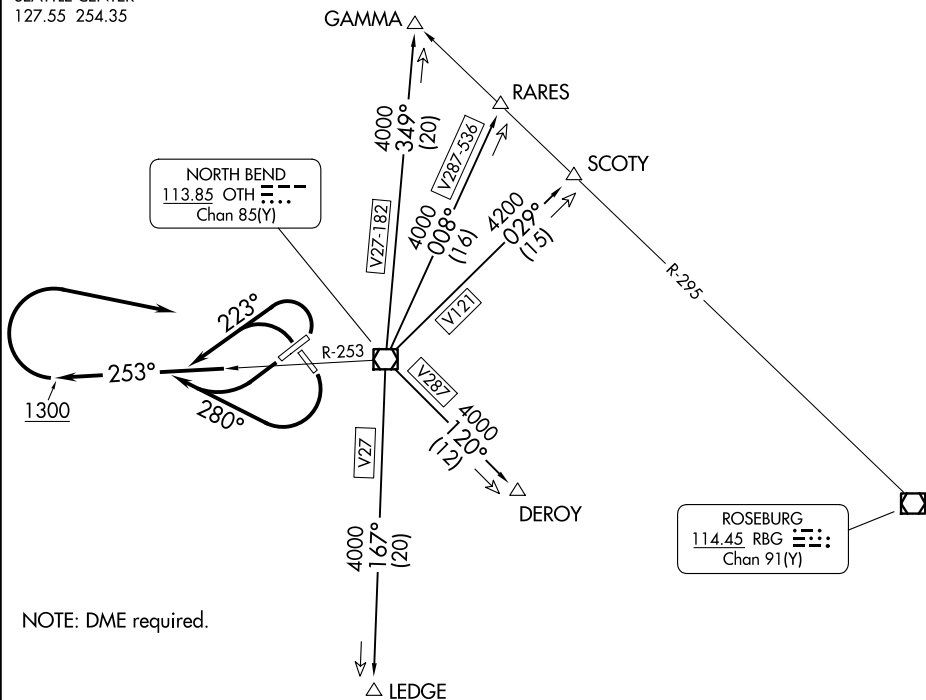
(OTH7.OTH) 25163

NORTH BEND SEVEN DEPARTURE

AL-929 (FAA)

SOUTHWEST OREGON RGNL (OTH)
NORTH BEND, OREGON

SEATTLE CENTER
127.55 254.35



NOTE: DME required.

TAKEOFF MINIMUMS

- Rwy 5: 900-3 with minimum climb of 300' per NM to 900 or Standard with minimum climb of 475' per NM to 1200.
- Rwy 13: 400-1 with minimum climb of 330' per NM to 1200.
- Rwy 23: Standard.
- Rwy 31: 300-1¼ or Standard with minimum climb of 280' per NM to 300.

NOTE: Chart not to scale.

DEPARTURE ROUTE DESCRIPTION

TAKEOFF RUNWAYS 5, 31: Climbing left turn heading 223° and on OTH R-253 thence

TAKEOFF RUNWAYS 13, 23: Climbing right turn heading 280° and on OTH R-253 thence

. . . . continue climb on OTH R-253 to 1300 then right turn direct OTH VOR/DME, then on assigned transition.

DEROY TRANSITION (OTH7.DEROY): From over OTH VOR/DME on OTH R-120 to DEROY INT.

GAMMA TRANSITION (OTH7.GAMMA): From over OTH VOR/DME on OTH R-349 to GAMMA INT.

LEDGE TRANSITION (OTH7.LEDGE): From over OTH VOR/DME on OTH R-167 to LEDGE INT.

RARES TRANSITION (OTH7.RARES): From over OTH VOR/DME on OTH R-008 to RARES INT.

SCOTY TRANSITION (OTH7.SCOTY): From over OTH VOR/DME on OTH R-029 to SCOTY INT.

NORTH BEND SEVEN DEPARTURE
(OTH7.OTH) 26MAR20

NORTH BEND, OREGON
SOUTHWEST OREGON RGNL (OTH)

NW-1, 11 JUN 2026 to 09 JUL 2026

NW-1, 11 JUN 2026 to 09 JUL 2026