

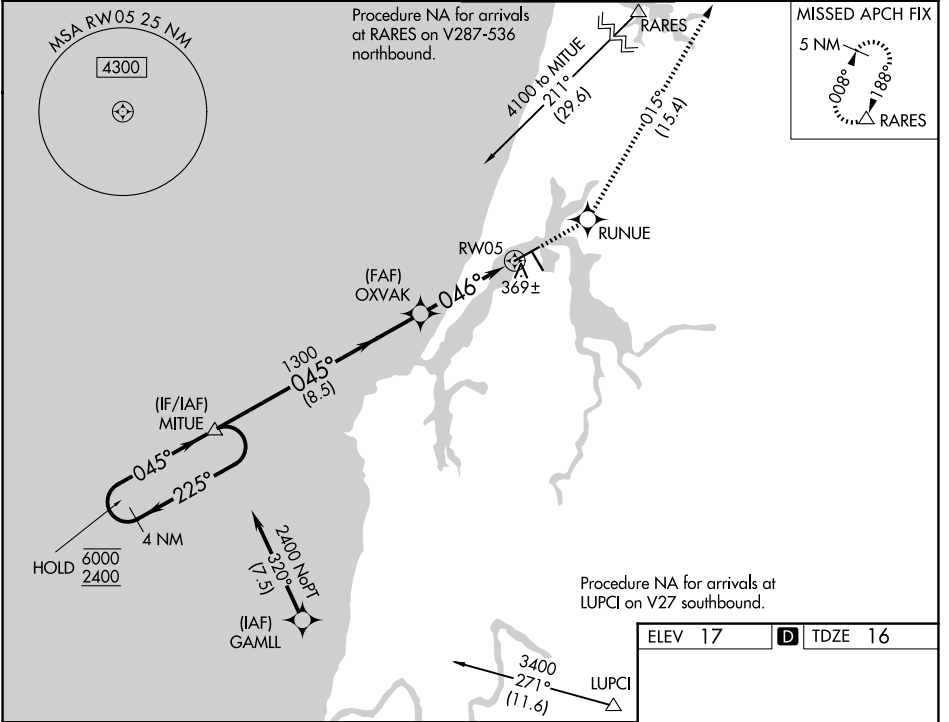
WAAS CH <b>82416</b> <b>W05A</b>	APP CRS <b>046°</b>	Rwy Ldg TDZE Apt Elev	<b>5320</b> <b>16</b> <b>17</b>
--	------------------------	-----------------------------	---------------------------------------

# RNAV (GPS) Y RWY 5

SOUTHWEST OREGON RGNL (OTH)

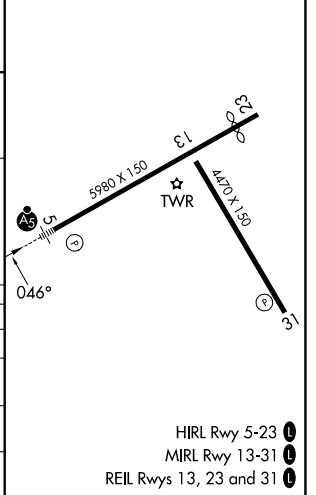
RNP APCH. ▼ Circling Rwy 13, 31 NA at night. For uncompensated Baro-VNAV systems, LNAV/VNAV NA below -2°C or above 54°C. For inop ALS, increase LPV all Cats visibility to ½ SM, LNAV/VNAV all Cats visibility to 1½ SM, and increase LNAV Cat C/D visibility to 1¾ SM.	MALS R AS	MISSED APPROACH: Climb to 6000 direct RUNUE and on track 015° to RARES and hold, continue climb-in-hold to 6000.
--	--------------	--

AWOS-3PT <b>135.075</b>	SEATTLE CENTER <b>127.55 254.35</b>	NORTH BEND TOWER* <b>118.45 (CTAF) 0</b>	GND CON <b>127.1</b>
----------------------------	--	---	-------------------------



ELEV 17	D	TDZE 16
---------	---	---------

CATEGORY	A	B	C	D
LPV DA		319-½	303 (400-½)	
LNAV/VNAV DA		550-1⅜	534 (600-1⅜)	
LNAV MDA	620-½	604 (700-½)	620-1⅜	604 (700-1⅜)
CIRCLING	680-1 663 (700-1)	820-1 803 (900-1)	1100-3 1083 (1100-3)	1160-3 1143 (1200-3)



NW-1, 11 JUN 2026 to 09 JUL 2026

NW-1, 11 JUN 2026 to 09 JUL 2026