

LOM MW <b>408</b>	APP CRS <b>324°</b>	Rwy Ldg <b>13492</b>
		TDZE <b>1167</b>
		Apt Elev <b>1189</b>

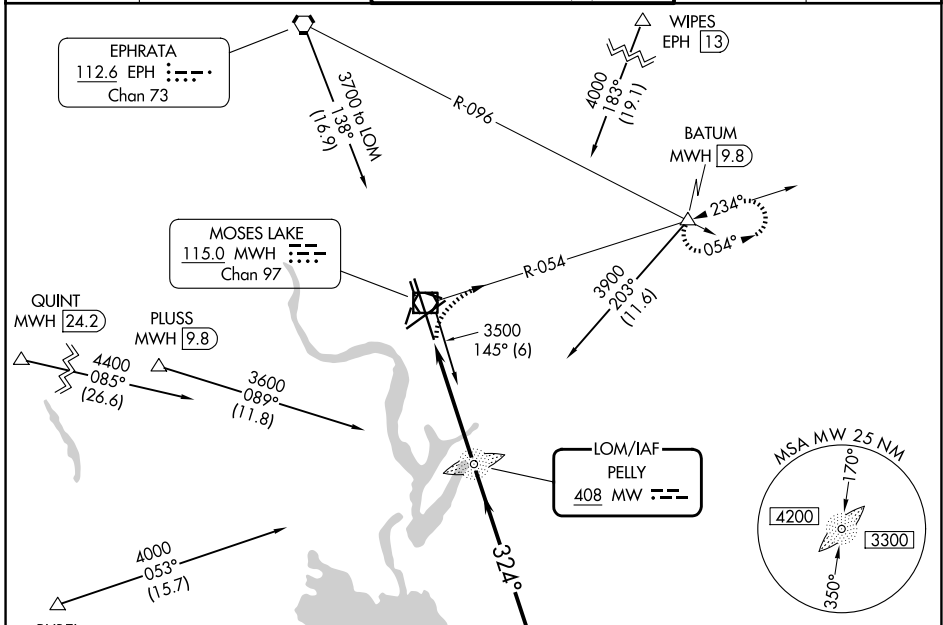
# NDB RWY 32R

GRANT COUNTY INTL (MWH)

**⚠** Circling Rwy 9, 27, 18, 36 NA at night. For inop ALS, increase S-32R Cats C and D visibility to 1 1/2 SM. When local altimeter setting not received, use EPH altimeter setting and increase all MDAs 40 feet and S-32R visibility Cat C/D 1/2 SM, and Circling visibility Cat C/D 1/4 SM.

**MALSR** MISSED APPROACH: Climbing right turn to 4000 on MWH VOR/DME R-054 to BATUM INT/9.8 DME and hold, continue climb-in-hold to 4000.

ATIS <b>119.05</b>	GRANT COUNTY APP CON ★ <b>126.4 379.95</b>	GRANT COUNTY TOWER ★ <b>118.25 (CTAF) 257.8 (E)</b> <b>128.0 257.8 (W)</b>	GND CON <b>121.9</b>	UNICOM <b>122.95</b>
-----------------------	---	--	-------------------------	-------------------------



**4000** MWH R-054

**BATUM** △

VGSI and descent angles not coincident (VGSI Angle 3.00/TCH 76).

Remain within 10 NM

MW LOM PELLY

1.44°

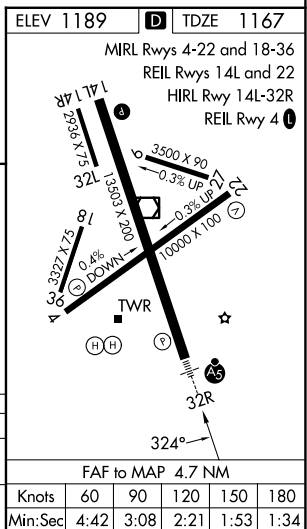
2800

324°

2600

≤ 2.76° TCH 55

4.7 NM



CATEGORY	A	B	C	D
S-32R	1680-1		513 (500-1)	
CIRCLING	1680-1 491 (500-1)		1720-1 1/2 531 (600-1 1/2)	1840-2 651 (700-2)

FAF to MAP 4.7 NM

Knots	60	90	120	150	180
Min:Sec	4:42	3:08	2:21	1:53	1:34

NW-1, 11 JUN 2026 to 09 JUL 2026

NW-1, 11 JUN 2026 to 09 JUL 2026