

APP CRS 144°	Rwy Ldg 13503
	TDZE 1169
	Apt Elev 1189

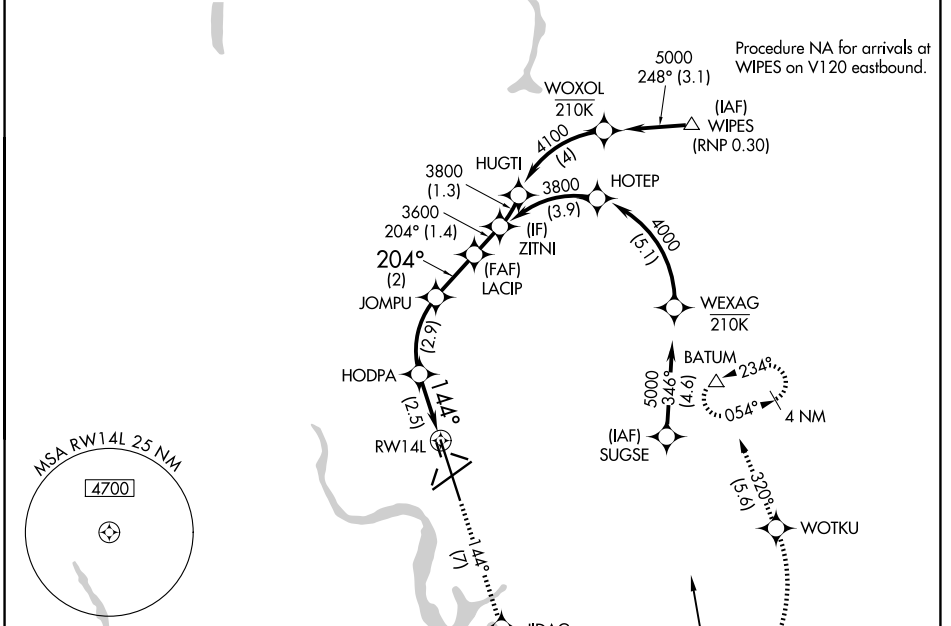
RNAV (RNP) Z RWY 14L

GRANT COUNTY INTL (MWH)

V For uncompensated Baro-VNAV systems, procedure NA below -17°C (2°F) or above 47°C (116°F). RF required. GPS required.

MISSED APPROACH: Climb to 4000 on track 144° to JIDAG left turn to WOTKU and track 320° to BATUM and hold.

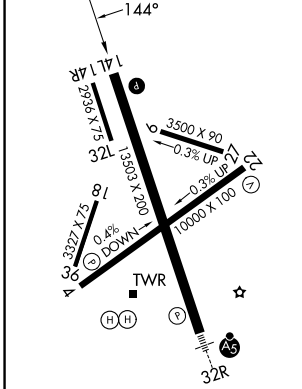
ATIS 119.05	GRANT COUNTY APP CON * 126.4 379.95	GRANT COUNTY TOWER * 118.25 (CTAF) 257.8 (E) 128.0 257.8 (W)	GND CON 121.9	UNICOM 122.95
-----------------------	---	--	-------------------------	-------------------------



NW-1, 11 JUN 2026 to 09 JUL 2026

NW-1, 11 JUN 2026 to 09 JUL 2026

ELEV 1189	D	TDZE 1169
-----------	----------	-----------



REIL Rwy 4 **1**
 REIL Rwys 14L and 22
 HIRL Rwy 14L-32R
 MIRL Rws 4-22 and 18-36

VGS1 and RNAV glidepath not coincident (VGS1 Angle 3.00/TCH 75).		4000	JIDAG	WOTKU	BATUM
ZITNI	LACIP	tr 144°	tr 144°	tr 320°	△
3800	3600	JOMPU	HODPA	2976	2022
3600	2976	2022	144°	144°	144°
GP 3.00°	TCH 52	1.4 NM	2 NM	2.9 NM	2.5 NM
CATEGORY	A	B	C	D	
RNP 0.10 DA	1419-¾		250 (300-¾)		
RNP 0.30 DA	1479-1		310 (300-1)		

AUTHORIZATION REQUIRED