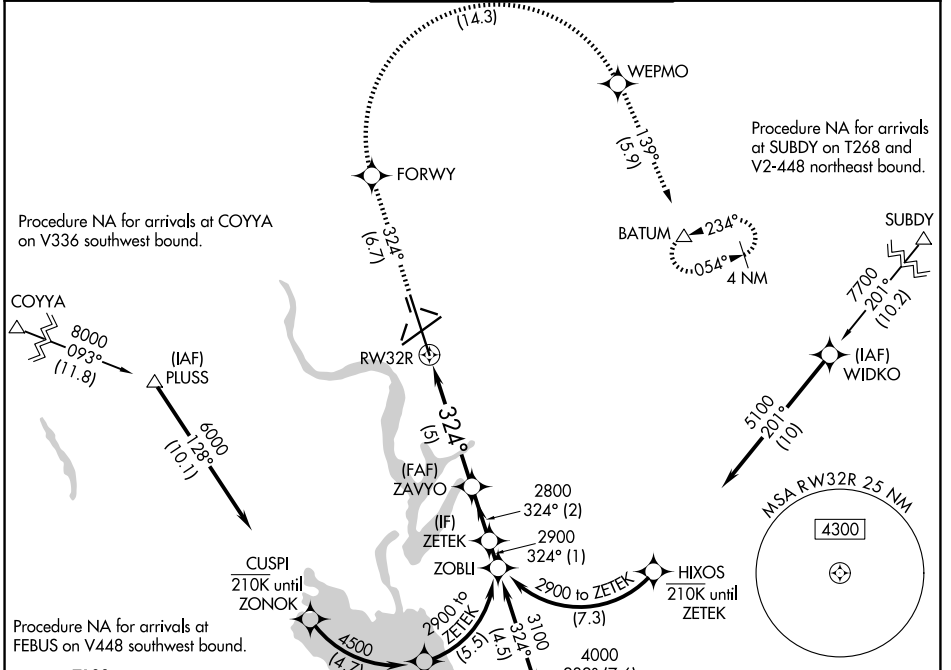


APP CRS	Rwy Ldg	13492
324°	TDZE	1167
	Apt Elev	1189

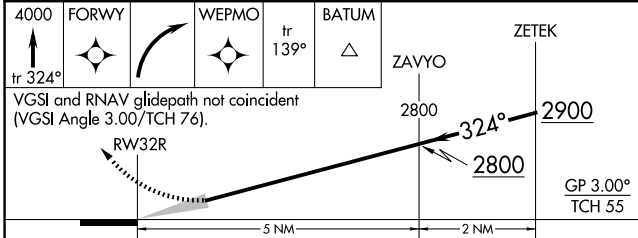
RNAV (RNP) Z RWY 32R

GRANT COUNTY INTL (MWH)

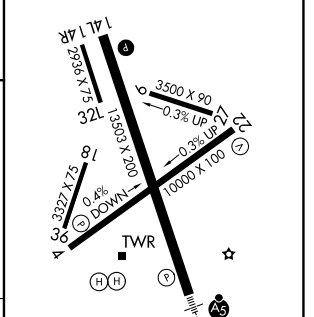
RNP AR APCH-GPS.		MALSR	MISSED APPROACH: Climb to 4000 on track 324° to FORWY right turn to WEPMO and track 139° to BATUM and hold.	
<p>▼ For uncompensated Baro-VNAV systems, procedure NA below -15°C or above 54°C. For inoperative ALS increase RNP 0.10 visibility all Cats to RVR 4000, increase RNP 0.30 visibility all Cats to RVR 6000.</p>				
ATIS	GRANT COUNTY APP CON *	GRANT COUNTY TOWER *	GND CON	UNICOM
119.05	126.4 379.95	118.25 (CTAF) 0 257.8 (E) 128.0 257.8 (W)	121.9	122.95



4000	FORWY	WEPMO	BATUM	ZAVYO	ZETEK
tr 324°			tr 139°		
VGSi and RNAV glidepath not coincident (VGSi Angle 3.00/TCH 76).					



ELEV 1189	D	TDZE 1167
-----------	----------	-----------



CATEGORY	A	B	C	D
RNP 0.10 DA		1417/24	250 (300-½)	
RNP 0.30 DA		1564/35	397 (400-⅝)	

AUTHORIZATION REQUIRED

REIL Rwy 4 **1**
 REIL Rwys 14L and 22
 HIRL Rwy 14L-32R
 MIRL Rwys 4-22 and 18-36

NW-1, 11 JUN 2026 to 09 JUL 2026

NW-1, 11 JUN 2026 to 09 JUL 2026