

WAAS CH 70410 W22A	APP CRS 216°	Rwy Ldg 10000 TDZE 1166 Apt Elev 1189
--	------------------------	--

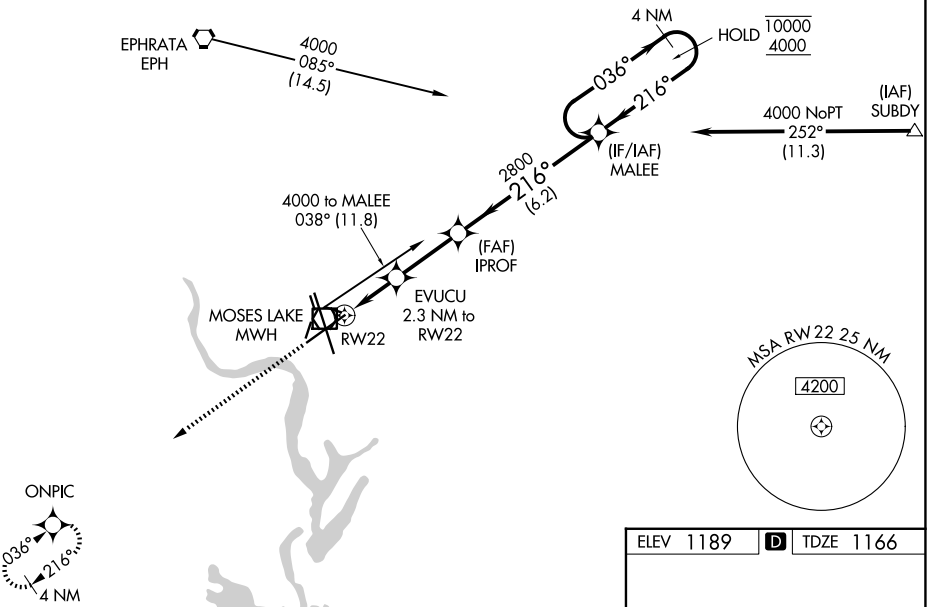
RNAV (GPS) Y RWY 22

GRANT COUNTY INTL (MWH)

RNP APCH - GPS.	<p>⚠ For uncompensated Baro-VNAV systems, LNAV/VNAV NA below -17°C or above 54°C. Baro-VNAV and VDP NA when using EPH altimeter setting. Circling Rwy 9, 27, 18, 36 NA at night. When local altimeter setting not received, use EPH altimeter setting and increase LPV DA to 1402 feet; increase LNAV/VNAV DA to 1465 feet; increase all MDAs 40 feet and LNAV visibility Cats C and D ½ SM and Circling visibility Cat D ¼ SM.</p>	MISSED APPROACH: Climb to 4000 direct ONPIC and hold, continue climb-in-hold to 4000.
-----------------	--	---

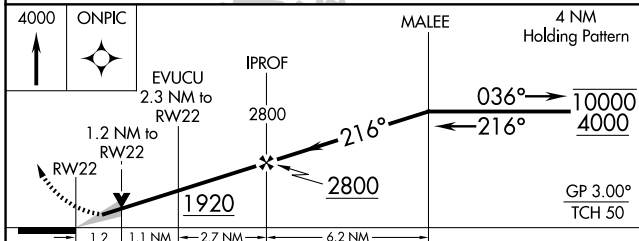
ATIS 119.05	GRANT COUNTY APP CON * 126.4 379.95	GRANT COUNTY TOWER * 118.25 (CTAF) 0 257.8 (E) 128.0 257.8 (W)	GND CON 121.9	UNICOM 122.95
-----------------------	---	--	-------------------------	-------------------------

Procedure NA for arrival on EPH VORTAC
airway radials 060 CW 135.



NW-1, 11 JUN 2026 to 09 JUL 2026

NW-1, 11 JUN 2026 to 09 JUL 2026



ELEV 1189	D TDZE 1166
-----------	--------------------

The detailed RNAV approach diagram shows the flight path from 4000ft holding pattern to RWY 22. Key points include MALEE (2.3 NM to RWY 22), EVUCU (2.3 NM to RWY 22), and IPROF. A missed approach procedure is shown as a 4000ft climb to ONPIC (4000ft) and a 4000ft NoPT (11.3) climb-in-hold. The MSA RW22 25 NM is shown with a 4200ft MSL. The ONPIC diagram shows a 4 NM holding pattern at 036°/216°.

REIL Rwy 4
REIL Rwy 14L and 22
HIRL Rwy 14L-32R
MRL Rwy 4-22 and 18-36