

| | | |
|--|------------------------|--|
| WAAS CH 77799 W32A | APP CRS 324° | Rwy Ldg 13492 TDZE 1167 Apt Elev 1189 |
|--|------------------------|--|

RNAV (GPS) Y RWY 32R

GRANT COUNTY INTL (MWH)

RNP APCH-GPS.

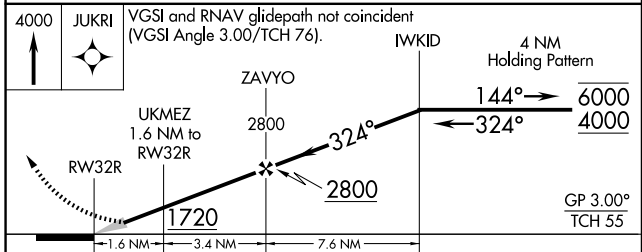
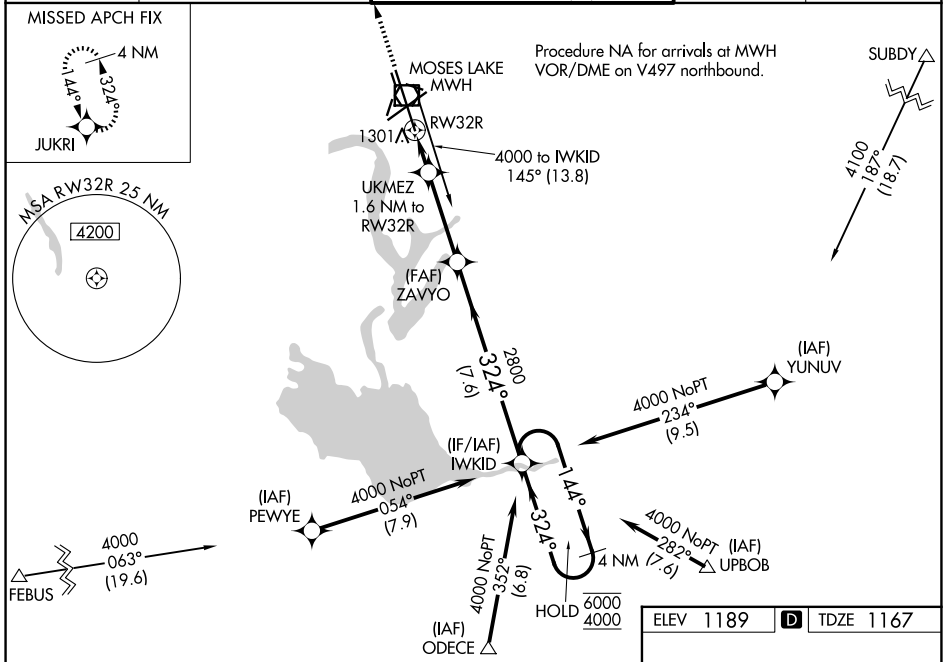
⚠ For uncompensated Baro-VNAV systems, LNAV/VNAV NA below -15°C or above 54°C. Circling Rwy 9/27, 18/36 NA at night. For inop ALS increase LNAV/VNAV all Cats visibility to RVR 5500, increase LNAV Cat C and D visibility to 1/2 SM.
*RVR 1800 authorized with use of FD or AP or HUD to DA (NA when using Ephrata altimeter setting).

MALSR



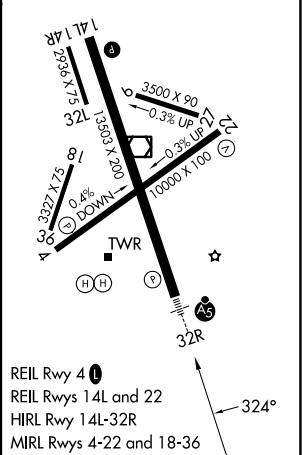
MISSED APPROACH: Climb to 4000 direct JUKRI and hold.

| | | | | |
|-----------------------|---|--|-------------------------|-------------------------|
| ATIS 119.05 | GRANT COUNTY APP CON * 126.4 379.95 | GRANT COUNTY TOWER * 118.25 (CTAF) 0 257.8 (E) 128.0 257.8 (W) | GND CON 121.9 | UNICOM 122.95 |
|-----------------------|---|--|-------------------------|-------------------------|



| | |
|-----------|-----------|
| ELEV 1189 | TDZE 1167 |
|-----------|-----------|

| CATEGORY | A | B | C | D |
|--------------|---------|---------------|---------------|-----------------------|
| LPV DA* | | 1367/24 | 200 (200-1/2) | |
| LNAV/VNAV DA | | 1540/35 | 373 (400-3/4) | |
| LNAV MDA | 1620/24 | 453 (500-1/2) | 1620/45 | 453 (500-3/4) |
| CIRCLING | 1660-1 | 471 (500-1) | 1680-1 1/2 | 1820-2 631 (700-2) |



REIL Rwy 4
REIL Rws 14L and 22
HIRL Rwy 14L-32R
MIRL Rws 4-22 and 18-36

NW-1, 11 JUN 2026 to 09 JUL 2026

NW-1, 11 JUN 2026 to 09 JUL 2026