

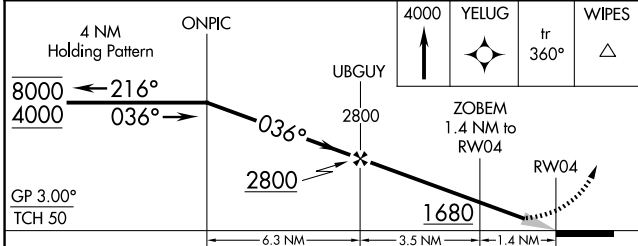
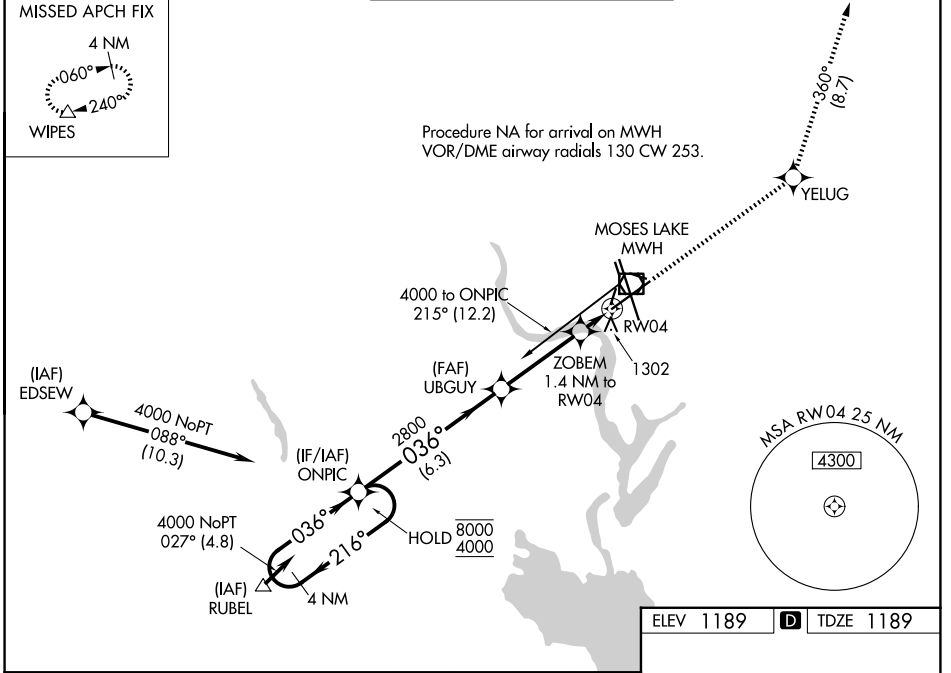
WAAS CH <b>42809</b> <b>W04A</b>	APP CRS <b>036°</b>	Rwy Ldg <b>10000</b> TDZE <b>1189</b> Apt Elev <b>1189</b>
--	------------------------	--

# RNAV (GPS) Y RWY 4

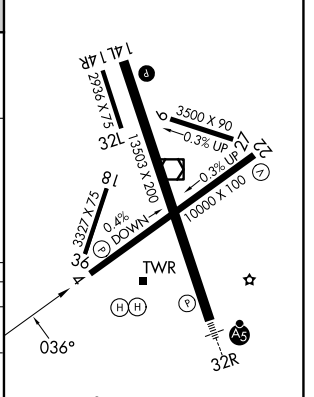
GRANT COUNTY INTL (MWH)

RNP APCH-GPS.	MISSED APPROACH: Climb to 4000 direct YELUG and on track 360° to WIPES and hold.
<p>▼ For uncompensated Baro-VNAV systems, LNAV/VNAV NA below -15°C or above 54°C. Circling Rwy 9, 27, 18, 36 NA at night. Baro-VNAV NA when using EPH altimeter setting. When local altimeter setting not received, use EPH altimeter setting and increase LPV DA to 1425 feet; increase LNAV/VNAV DA to 1549 feet; increase all MDAs 40 feet and LNAV Cats C and D visibility 1/2 SM and Circling Cat D 1/4 SM.</p>	

ATIS <b>119.05</b>	GRANT COUNTY APP CON * <b>126.4 379.95</b>	GRANT COUNTY TOWER * <b>118.25 (CTAF) 0 257.8 (E)</b> <b>128.0 257.8 (W)</b>	GND CON <b>121.9</b>	UNICOM <b>122.95</b>
-----------------------	---	--	-------------------------	-------------------------



ELEV 1189	D	TDZE 1189
-----------	---	-----------



CATEGORY	A	B	C	D
LPV DA		1389-3/4	200 (200-3/4)	
LNAV/VNAV DA		1513-1	324 (400-1)	
LNAV MDA	1620-1	431 (500-1)	1620-1 1/4	431 (500-1 1/4)
CIRCLING	1660-1	471 (500-1)	1720-1 1/2	1840-2
			531 (600-1 1/2)	651 (700-2)

REIL Rwy 4

REIL Rwy 14L and 22

HIRL Rwy 14L-32R

MIRL Rwy 4-22 and 18-36

NW-1, 11 JUN 2026 to 09 JUL 2026

NW-1, 11 JUN 2026 to 09 JUL 2026