

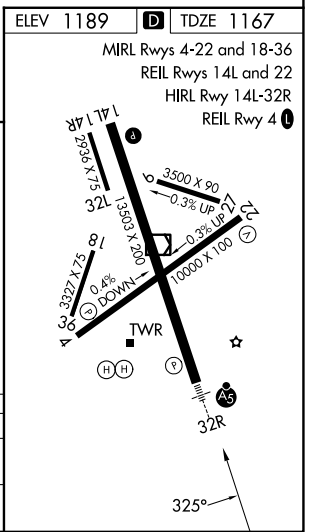
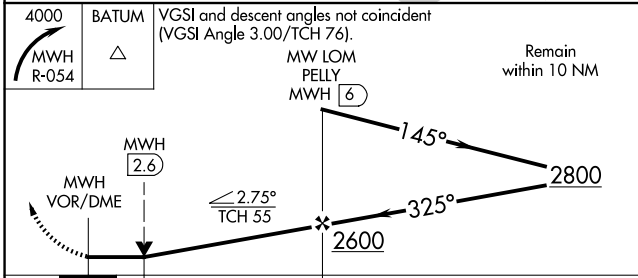
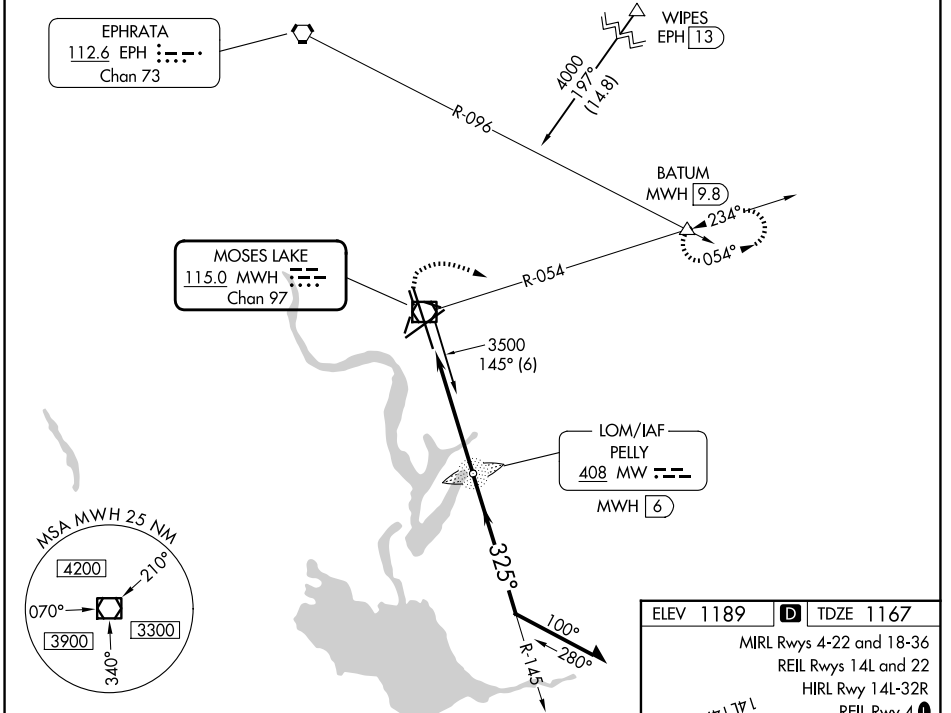
VOR/DME MWH 115.0 Chan 97	APP CRS 325°	Rwy Ldg 13492 TDZE 1167 Apt Elev 1189
---	------------------------	--

VOR RWY 32R

GRANT COUNTY INTL (MWH)

ADF or DME required.	MALSR 	MISSED APPROACH: Climbing right turn to 4000 on MWH VOR/DME R-054 to BATUM INT/MWH 9.8 DME and hold, continue climb-in-hold to 4000.
Circling Rwy 9, 27, 18, 36 NA at night. VDP NA when using EPH altimeter setting. When local altimeter setting not received, use EPH altimeter setting and increase all MDAs 40 feet and Circling visibility Cat D 1/4 SM. For inop ALS, increase S-32R Cats C and D visibility to 1 1/8 SM.		

ATIS 119.05	GRANT COUNTY APP CON * 126.4 379.95	GRANT COUNTY TOWER * 118.25 (CTAF) 257.8 (E) 128.0 257.8 (W)	GND CON 121.9	UNICOM 122.95
-----------------------	---	--	-------------------------	-------------------------



CATEGORY	A	B	C	D
S-32R		1660-1	493 (500-1)	
CIRCLING	1680-1	491 (500-1)	1720-1 1/2 531 (600-1 1/2)	1840-2 651 (700-2)

NW-1, 11 JUN 2026 to 09 JUL 2026

NW-1, 11 JUN 2026 to 09 JUL 2026