

VOR/DME MWH 115.0 Chan 97	APP CRS 025°	Rwy Ldg TDZE 1189 Apt Elev 1189
---	------------------------	---

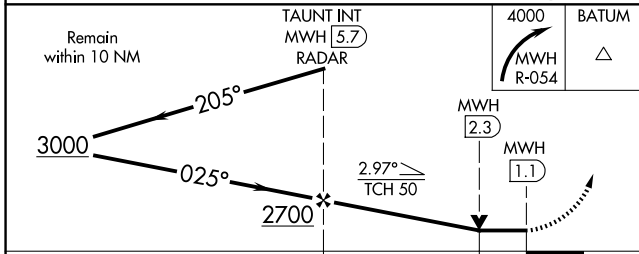
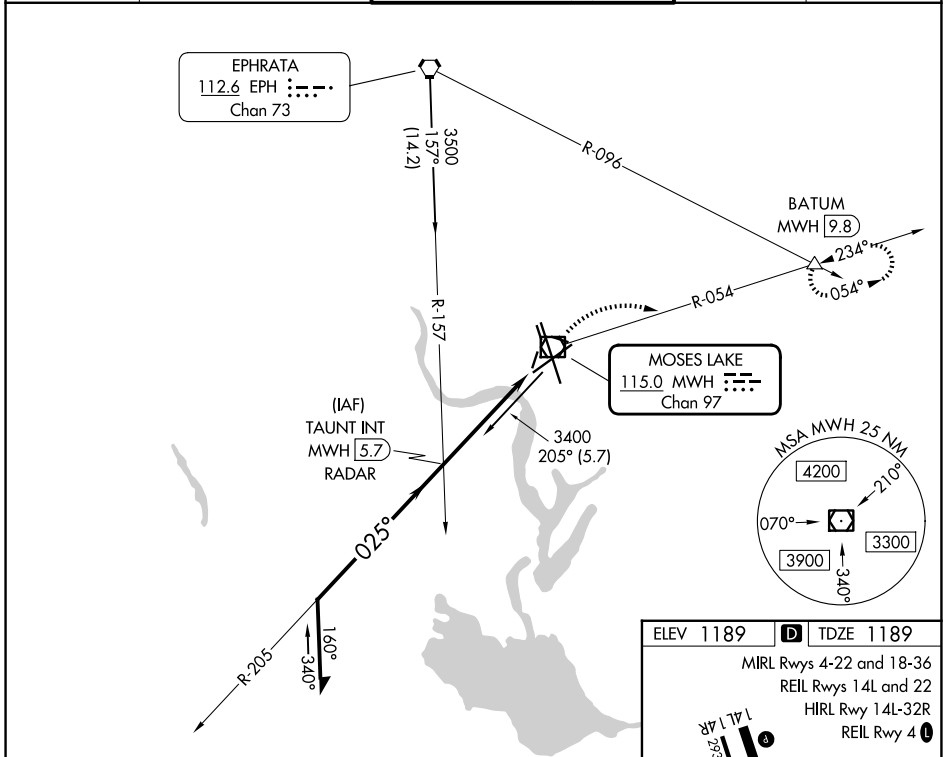
VOR RWY 4

GRANT COUNTY INTL (MWH)

⚠ Circling Rwy 9, 27, 18, 36 NA at night. VDP NA when using EPH altimeter setting. When local altimeter setting not received, use EPH altimeter setting and increase all MDAs 40 feet and S-4 visibility Cats C/D 1/8 SM, and Circling visibility Cat D 1/4 SM.

MISSED APPROACH: Climbing right turn to 4000 on MWH VOR/DME R-054 to BATUM INT/MWH 9.8 DME and hold, continue climb-in-hold to 4000.

ATIS 119.05	GRANT COUNTY APP CON * 126.4 379.95	GRANT COUNTY TOWER * 118.25 (CTAF) 257.8 (E) 128.0 257.8 (W)	GND CON 121.9	UNICOM 122.95
-----------------------	---	--	-------------------------	-------------------------



ELEV 1189 TDZE 1189

MIRL Rwys 4-22 and 18-36
REIL Rwys 14L and 22
HIRL Rwy 14L-32R
REIL Rwy 4

14L 1747
2936 X 75
32L
13303 X 200
3500 X 90
0.3% UP
0.4% DOWN
10000 X 100
TWR
32R

FAF to MAP 4.6 NM

Knots	60	90	120	150	180
Min:Sec	4:36	3:04	2:18	1:50	1:32

CATEGORY	A	B	C	D
S-4	1620-1 431 (500-1)		1620-1 1/4 431 (500-1 1/4)	
CIRCLING	1680-1 491 (500-1)		1720-1 1/2 531 (600-1 1/2)	1840-2 651 (700-2)

NW-1, 11 JUN 2026 to 09 JUL 2026

NW-1, 11 JUN 2026 to 09 JUL 2026