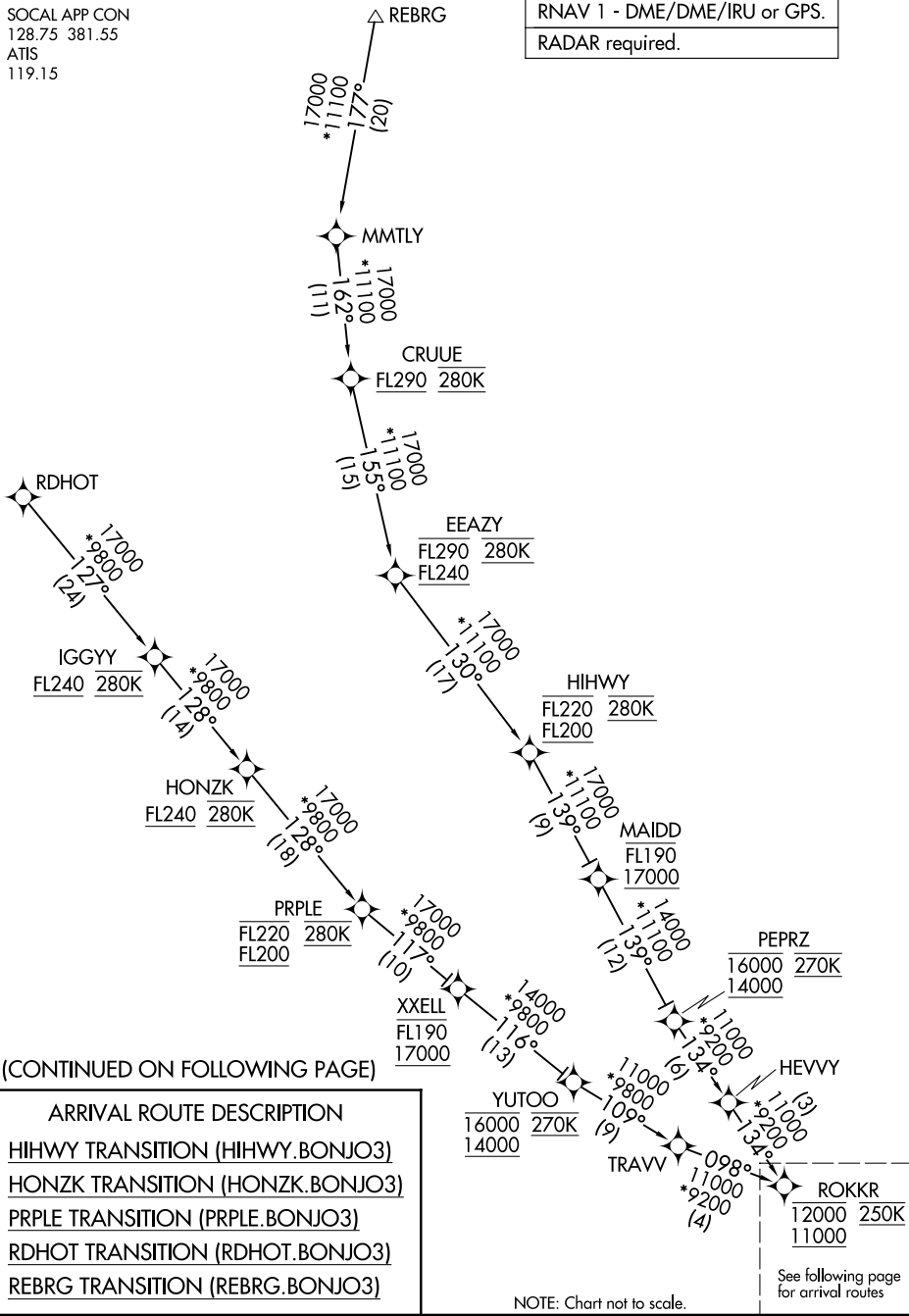


BONJO THREE ARRIVAL (RNAV) Transition Routes

SOCAL APP CON
128.75 381.55
ATIS
119.15

RNAV 1 - DME/DME/IRU or GPS.
RADAR required.



SW-3, 11 JUN 2026 to 09 JUL 2026

SW-3, 11 JUN 2026 to 09 JUL 2026

BONJO THREE ARRIVAL (RNAV) Transition Routes

(ROKKR.BONJO3) 25051

AL-5023 (FAA)

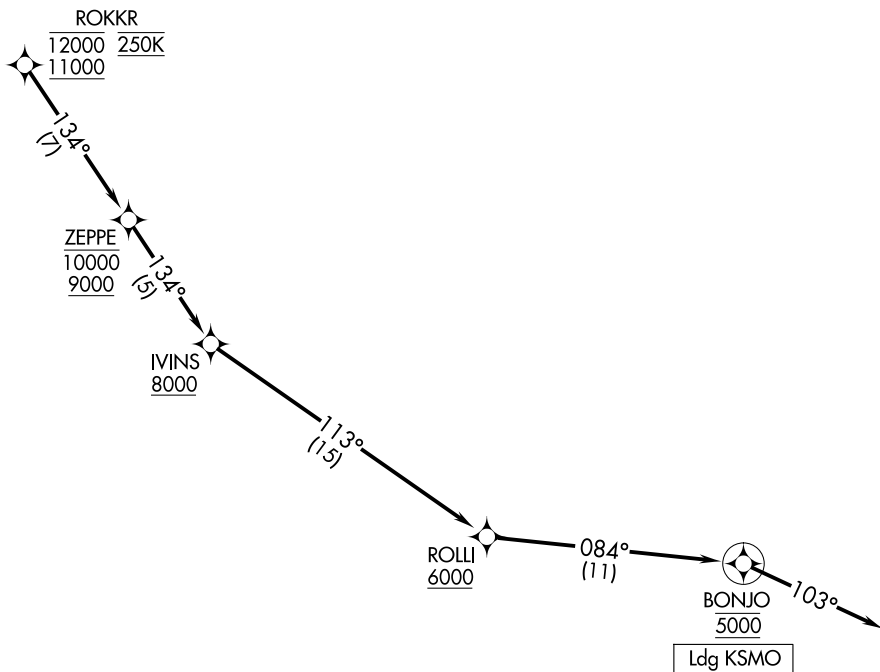
SANTA MONICA MUNI (SMO)
SANTA MONICA, CALIFORNIA

BONJO THREE ARRIVAL (RNAV) Arrival Routes

RNAV 1 - DME/DME/IRU or GPS.

RADAR required.

SOCAL APP CON
128.75 381.55
ATIS
119.15



SW-3, 11 JUN 2026 to 09 JUL 2026

SW-3, 11 JUN 2026 to 09 JUL 2026

NOTE: Chart not to scale.

ARRIVAL ROUTE DESCRIPTION

From ROKKR on track 134° to cross ZEPPE between 9000 and 10000, then on track 134° to cross IVINS at or above 8000, then on track 113° to cross ROLLI at or above 6000, then on track 084° to cross BONJO at 5000, then on track 103°. Expect RADAR vectors to final approach course.

BONJO THREE ARRIVAL (RNAV) Arrival Routes
(ROKKR.BONJO3) 20FEB25

SANTA MONICA, CALIFORNIA
SANTA MONICA MUNI (SMO)