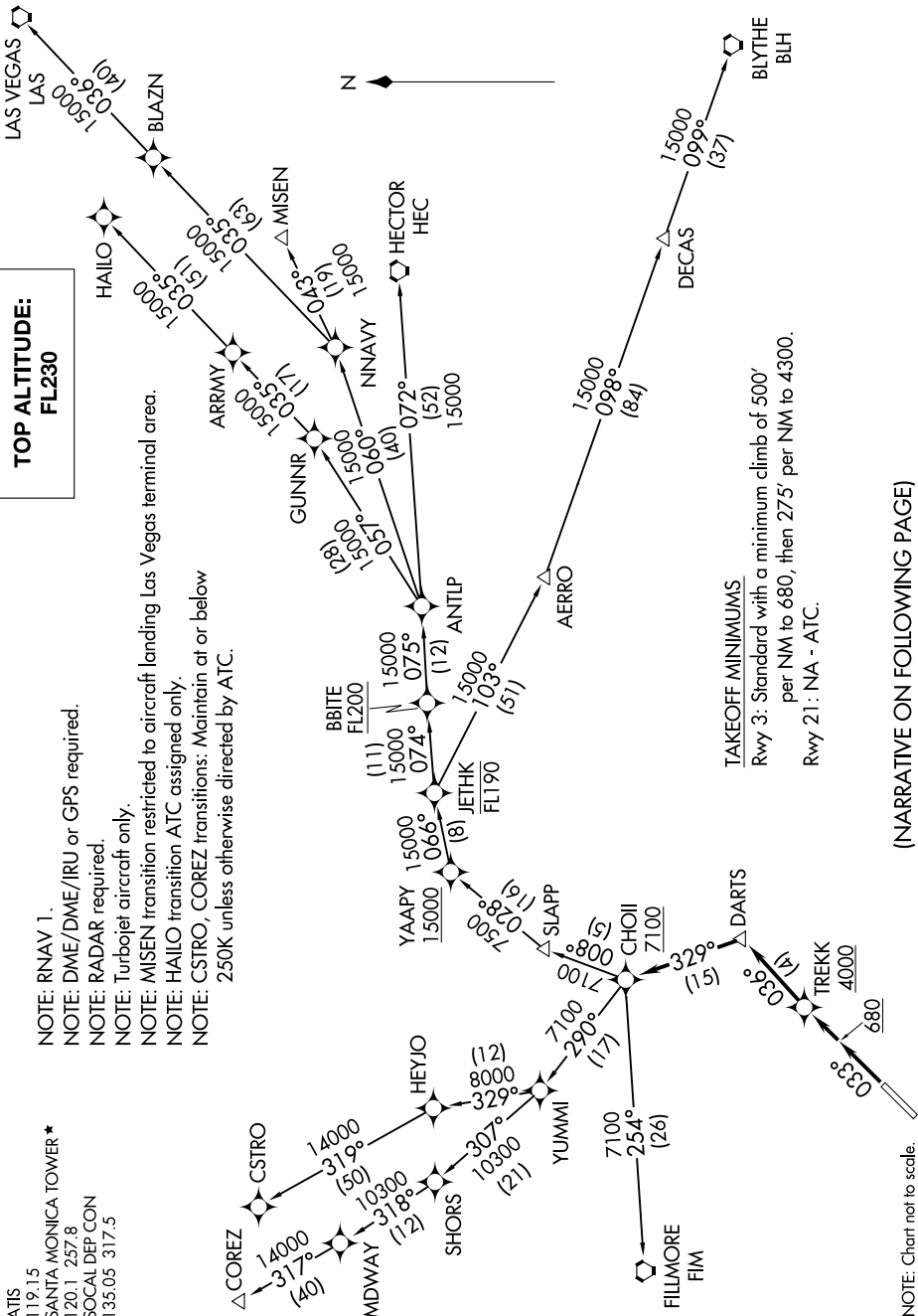


CHOI THREE DEPARTURE (RNAV)

AL-5023 (FAA)

SANTA MONICA MUNI (SMO)
SANTA MONICA, CALIFORNIA

9200 100 60 01 0200 000 11 ' 8-W5



(NARRATIVE ON FOLLOWING PAGE)

SW-3, 11 JUN 2026 to 09 JUL 2026

CHOI THREE DEPARTURE (RNAV)

(CHOI3.CHOI) 10SEP20

SANTA MONICA, CALIFORNIA
SANTA MONICA MUNI (SMO)

ATIS 119.15
 SANTA MONICA TOWER * 120.1 257.8
 SOCIAL DEP CON 135.05 317.5

NOTE: Chart not to scale.



DEPARTURE ROUTE DESCRIPTION

TAKEOFF RUNWAY 3: Climb on heading 033° to 680, then direct to cross TREKK at or above 4000, then on track 036° to DARTS, then on track 329° to cross CHOI1 at or above 7100, thence. . . .

. . . .on assigned transition, maintain FL230. Expect filed altitude 10 minutes after departure.

BLYTHE TRANSITION (CHOI13.BLH)

COREZ TRANSITION (CHOI13.COREZ)

CSTRO TRANSITION (CHOI13.CSTRO)

FILLMORE TRANSITION (CHOI13.FIM)

HAILO TRANSITION (CHOI13.HAILO)

HECTOR TRANSITION (CHOI13.HEC)

LAS VEGAS TRANSITION (CHOI13.LAS)

MISEN TRANSITION (CHOI13.MISEN)

SW-3, 11 JUN 2026 to 09 JUL 2026

SW-3, 11 JUN 2026 to 09 JUL 2026