

(SCAPO7.SCAPO) 23334

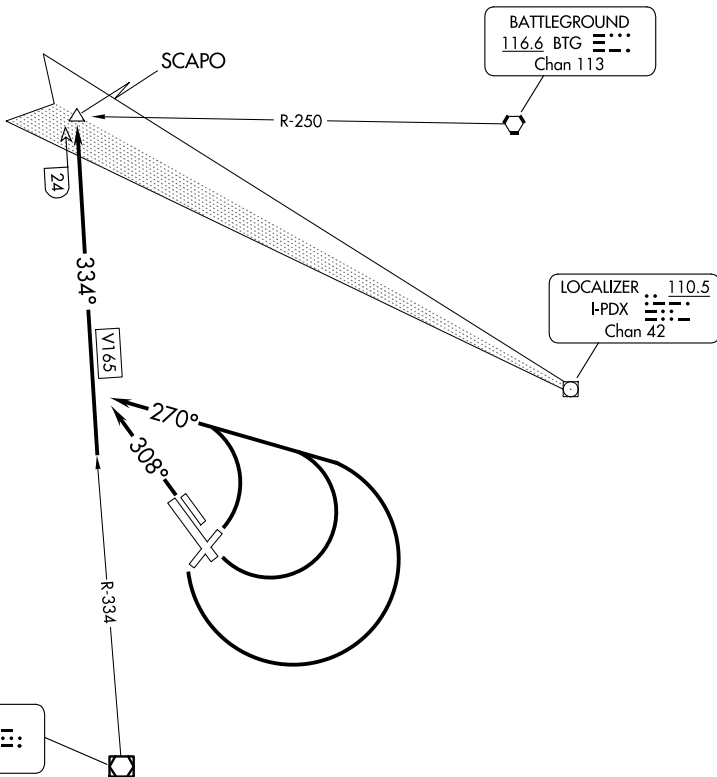
# SCAPO SEVEN DEPARTURE

AL-5063 (FAA)

PORTLAND-HILLSBORO (HIO)  
PORTLAND, OREGON

ATIS  
127.65  
GND CON  
121.7  
HILLSBORO TOWER \*  
119.3 (CTAF) 239.3  
PORTLAND DEP CON  
126.0 269.175

**TOP ALTITUDE:  
ASSIGNED BY ATC**



### TAKEOFF MINIMUMS

- Rwy 2: Standard with minimum climb of 235' per NM to 2000.
- Rwys 13L/R: Standard with minimum climb of 305' per NM to 2700.
- Rwy 20: Standard.
- Rwys 31L/R: Standard with minimum climb of 240' per NM to 600.

NOTE: Chart not to scale.



### DEPARTURE ROUTE DESCRIPTION

TAKEOFF RUNWAYS 2, 13L/R, 20: Climbing left turn heading 270°, thence . . . .

TAKEOFF RUNWAYS 31L/R: Climb heading 308°, thence . . . .

. . . . intercept UBG VOR/DME R-334 to SCAPO. Then on assigned route.  
Maintain ATC assigned altitude.

# SCAPO SEVEN DEPARTURE

(SCAPO7.SCAPO) 01FEB18

PORTLAND, OREGON  
PORTLAND-HILLSBORO (HIO)

NW-1, 11 JUN 2026 to 09 JUL 2026

NW-1, 11 JUN 2026 to 09 JUL 2026