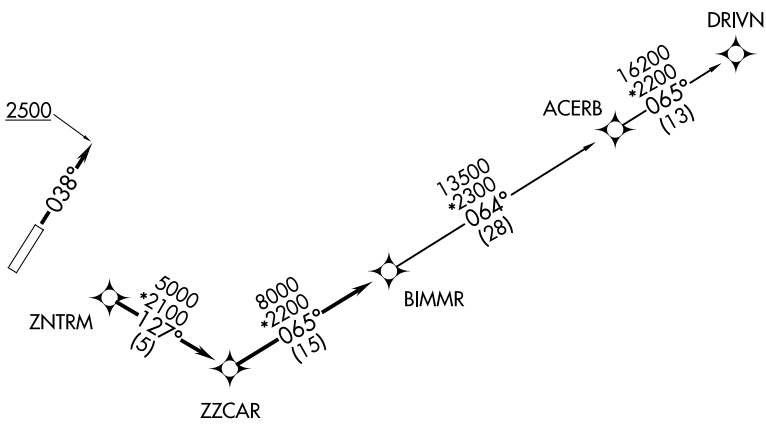


BIMMR THREE DEPARTURE (RNAV)

ATIS
134.25
GND CON
121.9
GREER TOWER*
120.1 251.15
UNICOM
122.95
GREER DEP CON*
119.4 350.2

RNAV 1 - DME/DME/IRU or GPS.
RADAR required.

**TOP ALTITUDE:
5000**



TAKEOFF MINIMUMS
Rwys 4, 22: Standard.

NOTE: Do not exceed 250K until advised by ATC.
NOTE: For turbojets only.

NOTE: Chart not to scale.

SE-2, 11 JUN 2026 to 09 JUL 2026

SE-2, 11 JUN 2026 to 09 JUL 2026



DEPARTURE ROUTE DESCRIPTION

TAKEOFF RUNWAY 4: Climb on heading 038° to 2500 before turning west or northwest for RADAR vectors to ZNTRM, thence. . . .

TAKEOFF RUNWAY 22: Climb on assigned heading for RADAR vectors to ZNTRM, thence. . . .

. . . .on depicted route to BIMMR. Then on assigned transition. Maintain 5000. Expect clearance to filed altitude within 10 minutes after departure.

ACERB TRANSITION (BIMMR3.ACERB)
DRIVN TRANSITION (BIMMR3.DRIVN)