

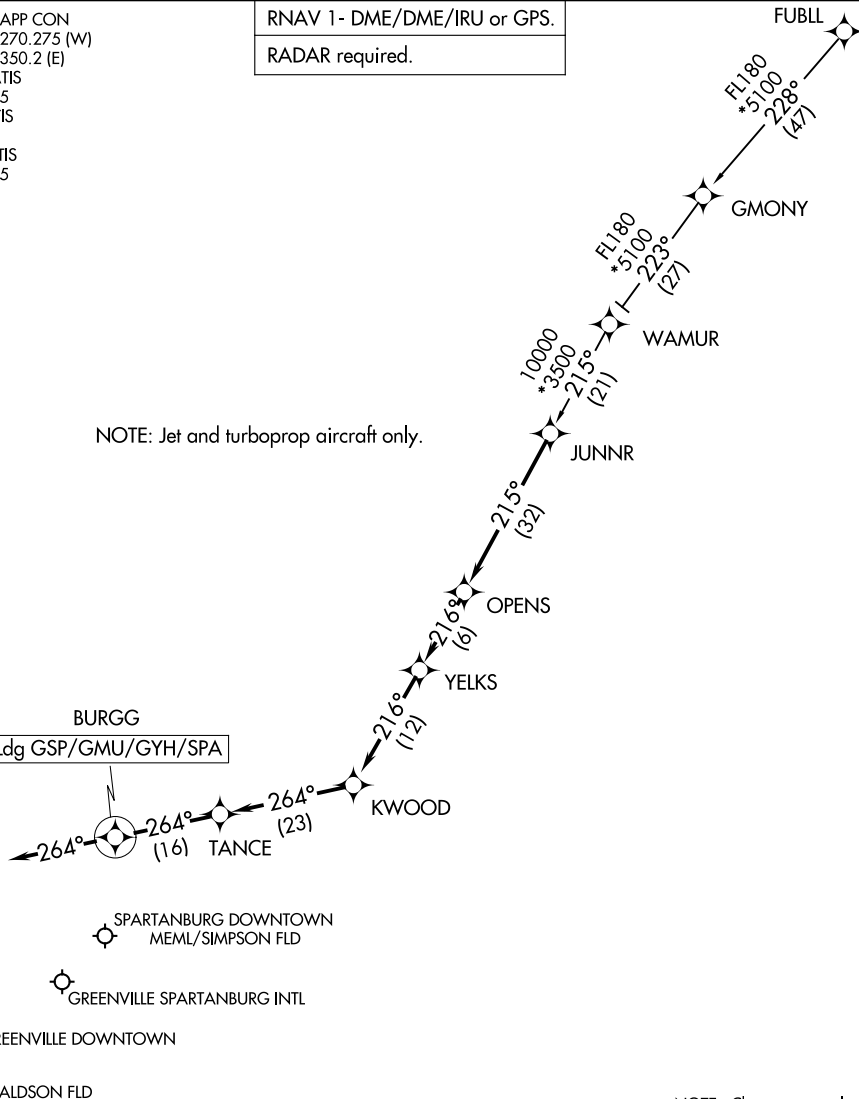
# JUNNR FOUR ARRIVAL (RNAV)

GREER, SOUTH CAROLINA

GREER APP CON  
 118.8 270.275 (W)  
 119.4 350.2 (E)  
 GMU ATIS  
 127.075  
 GSP ATIS  
 134.25  
 GYH ATIS  
 127.325

RNAV 1 - DME/DME/IRU or GPS.
RADAR required.

NOTE: Jet and turboprop aircraft only.



NOTE: Chart not to scale.

## ARRIVAL ROUTE DESCRIPTION

### FUBLL TRANSITION (FUBLL.JUNNR4)

**LANDING ALL AIRPORTS:** From JUNNR on track 215° to OPENS, then on track 216° to YELKS, then on track 216° to KWOOD, then on track 264° to TANCE, then on track 264° to BURGG, then on heading 264°. Expect RADAR vectors to final approach course.

SE-2, 11 JUN 2026 to 09 JUL 2026

SE-2, 11 JUN 2026 to 09 JUL 2026