

SAN CLEMENTE ISLAND, CALIFORNIA

TACAN RWY 24

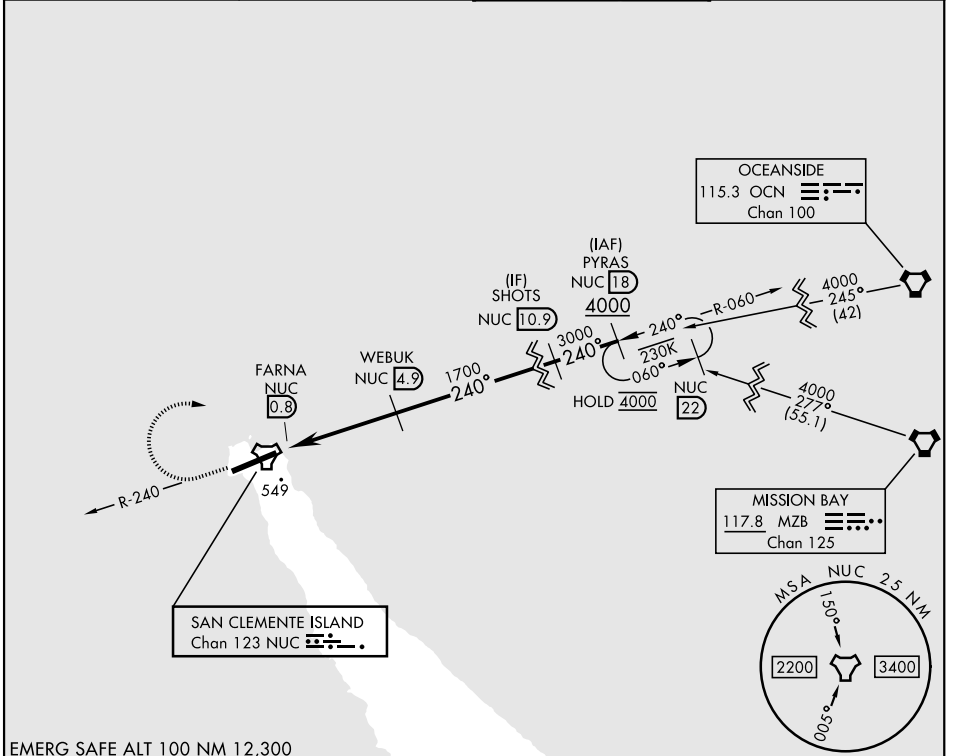
TACAN NUC Chan 123	APCH CRS 240°	Rwy Idg TDZE Arprt Elev 9300 184 184
------------------------------	-------------------------	--

[USN]

SAN CLEMENTE ISLAND NALF (FREDERICK SHERMAN FLD) (KNUC)

<p>▽ * Circling not authorized SE of Rwy 6-24.</p>	<p>MISSED APPROACH: Climbing right turn to 4000 and intercept NUC TACAN R-060 to PYRAS and hold.</p>
--	--

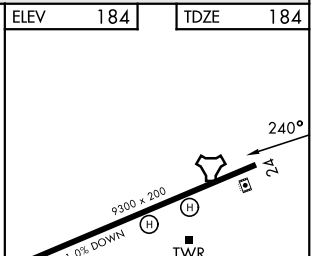
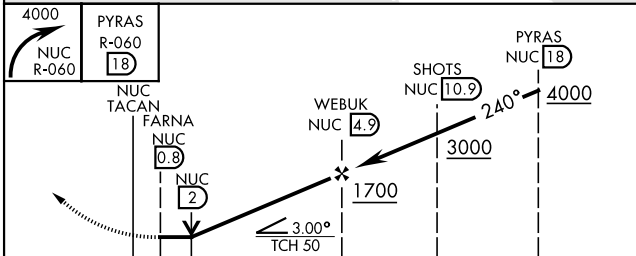
<p>ATIS ★ 268.6</p>	<p>APP CON 127.05 292.15</p>	<p>TOWER ★ 126.75 278.8</p>	<p>GND CON 119.550 251.05</p>
--------------------------------	---	--	--



SW-3, 11 JUN 2026 to 09 JUL 2026

SW-3, 11 JUN 2026 to 09 JUL 2026

EMERG SAFE ALT 100 NM 12,300



CATEGORY	A	B	C	D	E
S-24	800-1 616 (700-1)		800-1¾ 616 (700-1¾)		
CIRCLING*	800-1 616 (700-1)		800-1¾ 616 (700-1¾)	800-2 616 (700-2)	800-2¼ 616 (700-2¼)

ELEV	184	TDZE	184
REIL Rwy 6		REIL Rwy 24	Ⓛ
HIRL Rwy 6-24			Ⓛ

SAN CLEMENTE ISLAND, CALIFORNIA
Amdt 2 14MAY26

SAN CLEMENTE ISLAND NALF (FREDERICK SHERMAN FLD) (KNUC)
33°01'N-118°35'W

TACAN RWY 24