

TACAN RWY 30

TACAN NSI Chan 39	APCH CRS 290°	Rwy Ldg TDZE Arprt Elev 10,002 506 506
-----------------------------	-------------------------	--

[USN]

SAN NICOLAS ISLAND NOLF (KNSI)

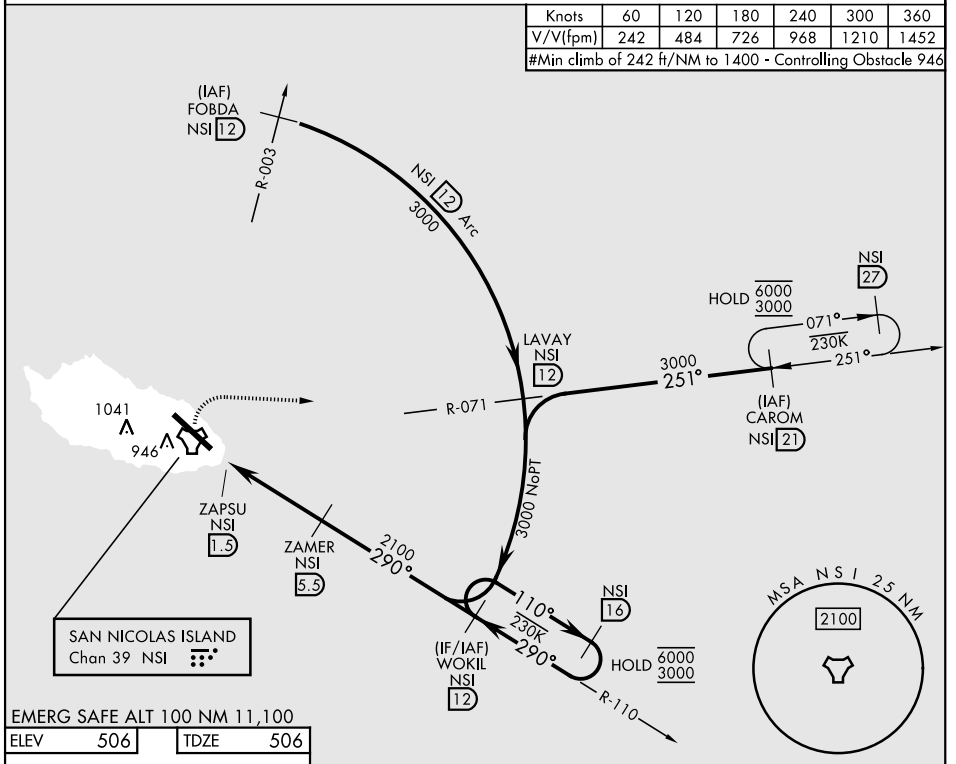
RADAR required
 ▼ * Circling not authorized SW of Rwy 12-30.

MISSED APPROACH: Climb to 1000, then climbing right turn to 3000, intercept NSI TACAN R-071 to LAVAY. Arc south on 12 DME arc to WOKIL.

CTAF
126.85 379.3

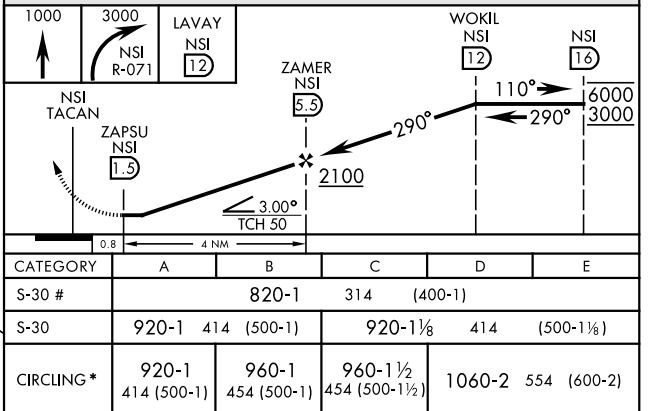
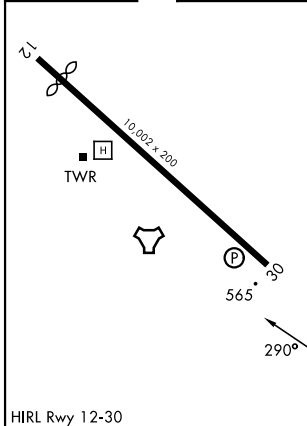
Knots	60	120	180	240	300	360
V/V(fpm)	242	484	726	968	1210	1452

#Min climb of 242 ft/NM to 1400 - Controlling Obstacle 946



EMERG SAFE ALT 100 NM 11,100

ELEV	506	TDZE	506
------	-----	------	-----



CATEGORY	A	B	C	D	E
S-30 #	820-1		314	(400-1)	
S-30	920-1	414 (500-1)	920-1½	414	(500-1½)
CIRCLING*	920-1 414 (500-1)	960-1 454 (500-1)	960-1½ 454 (500-1½)	1060-2	554 (600-2)

TACAN RWY 30

SW-3, 11 JUN 2026 to 09 JUL 2026

SW-3, 11 JUN 2026 to 09 JUL 2026