

VORTAC POM 110.4 Chan 41	APP CRS 344°	Rwy Ldg TDZE Apt Elev N/A 1014
---------------------------------------	------------------------	---

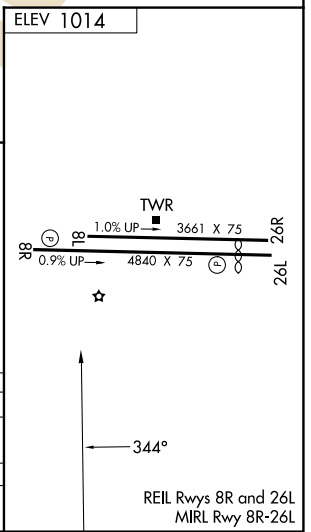
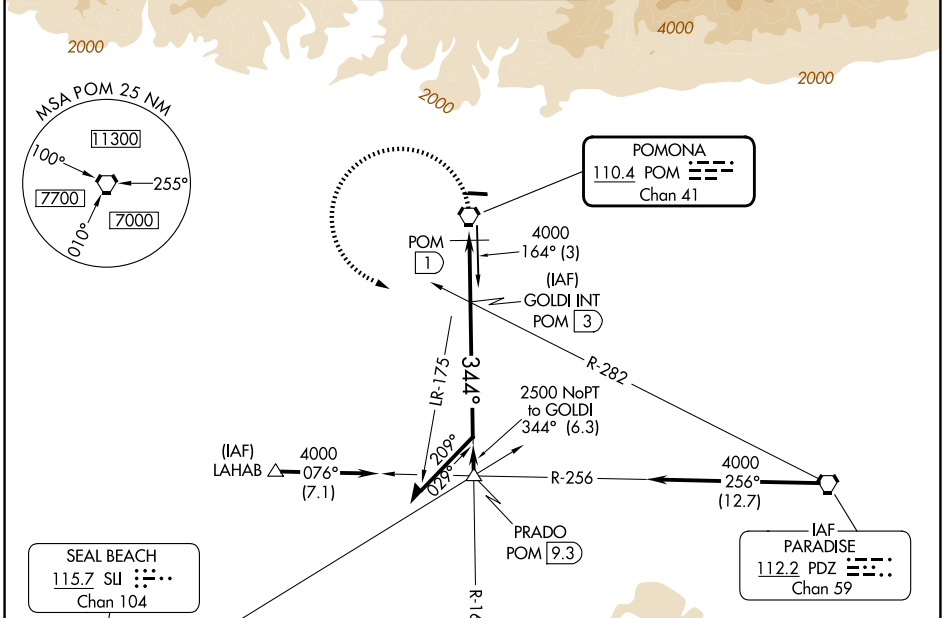
VOR or GPS-A

BRACKETT FLD (POC)

⚠ When local altimeter setting not received, use Ontario Intl altimeter setting and increase all MDA 40 feet and visibility Cat C ¼ mile. Night landing: Rwy 8L NA, Rwy 8R operational VGSi required, remain on or above VGSi glidepath until threshold. Helicopter visibility reduction below 1 SM not authorized. Circling NA for Cat C north of Rwy 8L-26R

MISSED APPROACH: Climbing left turn to 4000 via POM R-164 to PRADO INT.

ATIS 124.4	SOCAL APP CON 125.5 349.0	BRACKETT TOWER* 118.2 (CTAF) (8R/26L) 133.3 (8L/26R)	GND CON 125.0	UNICOM 122.95
----------------------	-------------------------------------	--	-------------------------	-------------------------



4000	PRADO	GOLDI INT POM [3]			Remain within 10 NM
POM R-164	△				
POM VORTAC	POM 1				
1800		2500		4000	
← 1 NM →		← 2 NM →			
CATEGORY	A	B	C	D	
CIRCLING	1800-1 786 (800-1)	1800-1¼ 786 (800-1¼)	1800-2¼ 786 (800-2¼)	NA	
DME MINIMUMS					
CIRCLING	1680-1 666 (700-1)		1760-2¼ 746 (800-2¼)	NA	

SW-3, 11 JUN 2026 to 09 JUL 2026

SW-3, 11 JUN 2026 to 09 JUL 2026