

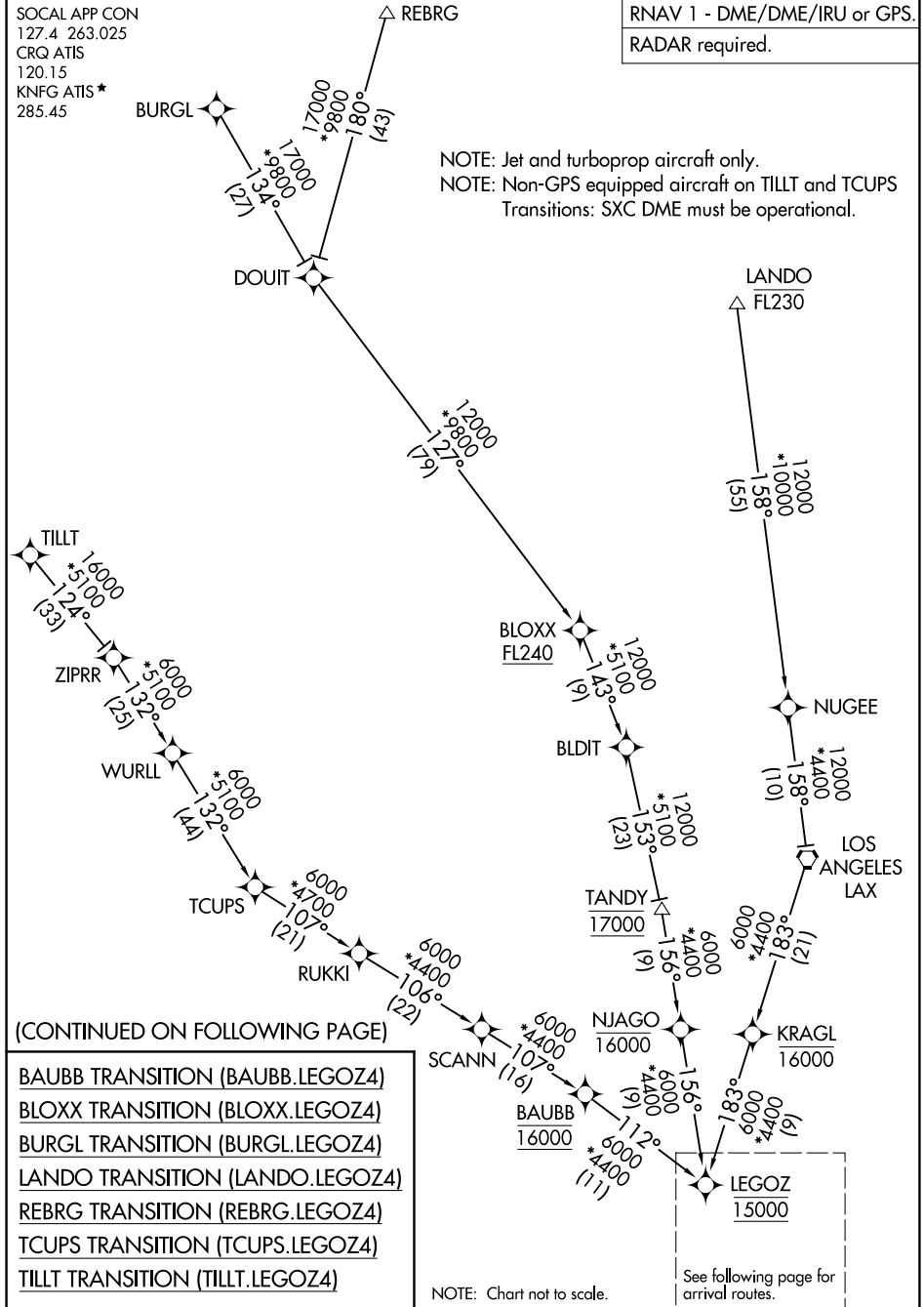
LEGOZ FOUR ARRIVAL (RNAV) Transition Routes

CARLSBAD, CALIFORNIA

SOCAL APP CON
127.4 263.025
CRQ ATIS
120.15
KNFG ATIS*
285.45

RNAV 1 - DME/DME/IRU or GPS.
RADAR required.

NOTE: Jet and turboprop aircraft only.
NOTE: Non-GPS equipped aircraft on TILLT and TCUPS
Transitions: SXC DME must be operational.



(CONTINUED ON FOLLOWING PAGE)

- BAUBB TRANSITION (BAUBB.LEGOZ4)
- BLOXX TRANSITION (BLOXX.LEGOZ4)
- BURGL TRANSITION (BURGL.LEGOZ4)
- LANDO TRANSITION (LANDO.LEGOZ4)
- REBRG TRANSITION (REBRG.LEGOZ4)
- TCUPS TRANSITION (TCUPS.LEGOZ4)
- TILLT TRANSITION (TILLT.LEGOZ4)

NOTE: Chart not to scale.

See following page for arrival routes.

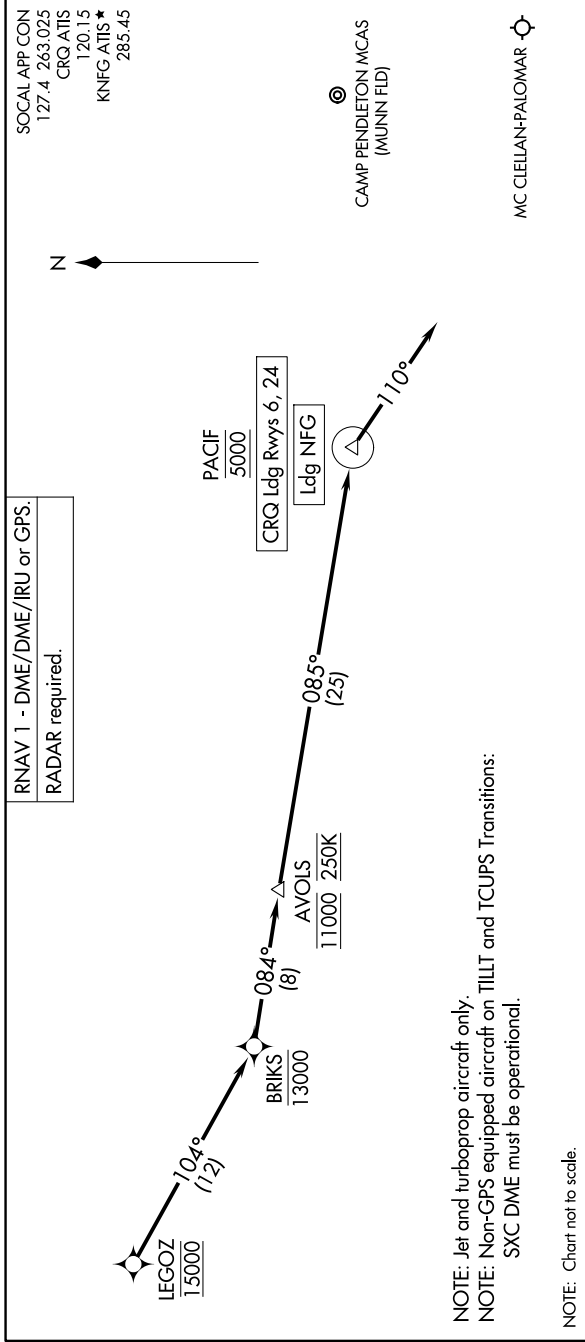
SW-3, 11 JUN 2026 to 09 JUL 2026

SW-3, 11 JUN 2026 to 09 JUL 2026

LEGOZ FOUR ARRIVAL (RNAV) Arrival Routes

CARLSBAD, CALIFORNIA

9200 20100 60 01 92020 NN00 11 '8-MS



ARRIVAL ROUTE DESCRIPTION

LANDING NFG: From LEGOZ on track 104° to cross BRIKS at or below 13000, then on track 084° to cross AVOLS at 11000 and at 250K, then on track 085° to cross PACIF at 5000, then on track 110°. Expect RADAR vectors to final approach course.

LANDING CRQ RUNWAY 6: From LEGOZ on track 104° to cross BRIKS at or below 13000, then on track 084° to cross AVOLS at 11000 and at 250K, then on track 085° to cross PACIF at 5000, then on track 110°. Expect RNAV (RNP) Z RWY 6 approach or RADAR vectors to final approach course.

LANDING CRQ RUNWAY 24: From LEGOZ on track 104° to cross BRIKS at or below 13000, then on track 084° to cross AVOLS at 11000 and at 250K, then on track 085° to cross PACIF at 5000, then on track 110°. Expect RADAR vectors to final approach course.

SW-3, 11 JUN 2026 to 09 JUL 2026