

(PADRZ2.PADRZ) 17341

PADRZ TWO DEPARTURE (RNAV)

AL-5310 (FAA)

MC CLELLAN-PALOMAR (CRQ)
CARLSBAD, CALIFORNIA

ATIS
120.15
PALOMAR TOWER*
118.6 276.4
SOCAL DEP CON
119.6 363.1

**TOP ALTITUDE:
15000**



DEPARTURE ROUTE DESCRIPTION

TAKEOFF RUNWAY 6: Climbing left turn heading 245° to 2300, do not exceed 210K until established on heading 245°, expect vectors to cross GYWNN at or above 8000, then on track 308° to PADRZ, thence. . . .

TAKEOFF RUNWAY 24: Climb heading 245° to 2300, expect vectors to cross GYWNN at or above 8000, then on track 308° to PADRZ, thence. . . .

. . . .on (transition). Maintain 15000. Expect higher altitude 10 minutes after departure.

CHKNN TRANSITION (PADRZ2.CHKNN)

DINTY TRANSITION (PADRZ2.DINTY)

IKAYE TRANSITION (PADRZ2.IKAYE)

MALIT TRANSITION (PADRZ2.MALIT)

OROSZ TRANSITION (PADRZ2.OROSZ)

SHAFTER TRANSITION (PADRZ2.EHF)

NOTE: RNAV 1.

NOTE: RADAR required.

NOTE: Turbojets and turboprops only.

NOTE: CHKNN, SHAFTER, IKAYE, OROSZ
TRANSITIONS: DME/DME/IRU or GPS
required.

NOTE: DINTY, MALIT TRANSITIONS: GPS only.

NOTE: For non-GPS equipped aircraft,
Oceanside (OCN) must be operational.

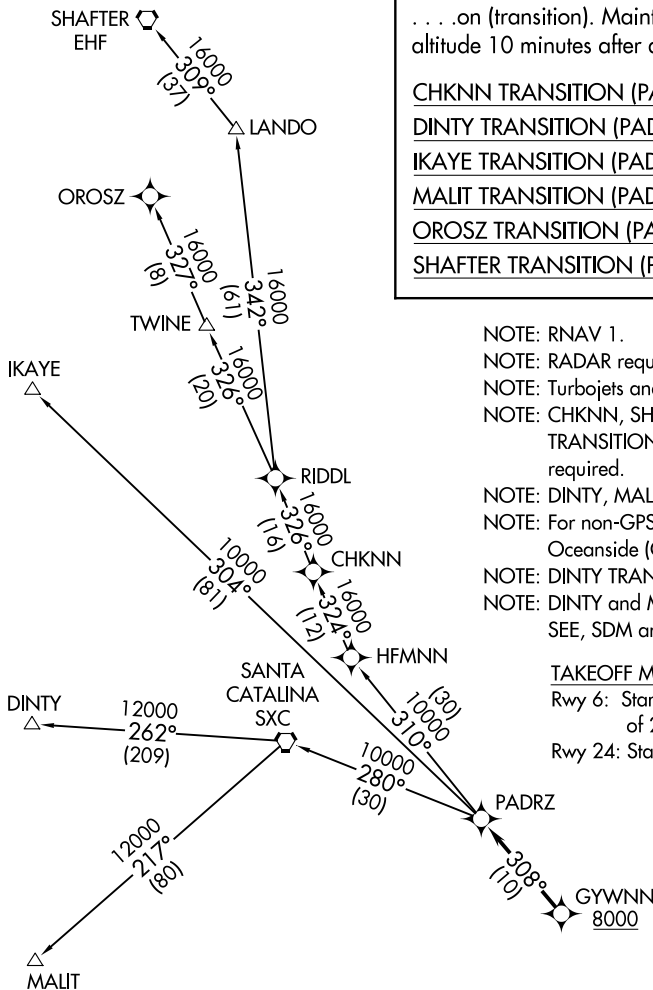
NOTE: DINTY TRANSITION ATC assigned only.

NOTE: DINTY and MALIT TRANSITIONS NA from
SEE, SDM and RNM airports.

TAKEOFF MINIMUMS

Rwy 6: Standard with minimum climb
of 255' per NM to 1700.

Rwy 24: Standard.

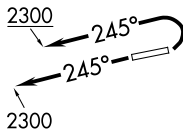


NOTE: RNAV 1.
NOTE: RADAR required.
NOTE: Turbojets and turboprops only.
NOTE: CHKNN, SHAFTER, IKAYE, OROSZ
TRANSITIONS: DME/DME/IRU or GPS
required.
NOTE: DINTY, MALIT TRANSITIONS: GPS only.
NOTE: For non-GPS equipped aircraft,
Oceanside (OCN) must be operational.
NOTE: DINTY TRANSITION ATC assigned only.
NOTE: DINTY and MALIT TRANSITIONS NA from
SEE, SDM and RNM airports.

TAKEOFF MINIMUMS

Rwy 6: Standard with minimum climb
of 255' per NM to 1700.

Rwy 24: Standard.



NOTE: Chart not to scale.

PADRZ TWO DEPARTURE (RNAV)

(PADRZ2.PADRZ) 07DEC17

CARLSBAD, CALIFORNIA
MC CLELLAN-PALOMAR (CRQ)

SW-3, 11 JUN 2026 to 09 JUL 2026

SW-3, 11 JUN 2026 to 09 JUL 2026