

APP CRS 245°	Rwy Ldg TDZE Apt Elev	4897 326 331
------------------------	-----------------------------	---


RNAV (RNP) Z RWY 24

MC CLELLAN-PALOMAR (CRQ)

RNP AR APCH - GPS. Authorization required. From PALCI or EGIVE: RF, from CARCA, PALCI, URIJI, or WAGAV: min RNP 0.30. From JLI VORTAC: min RNP 0.60.

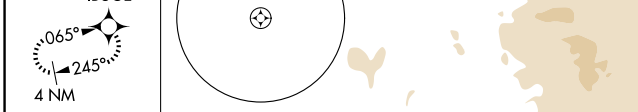
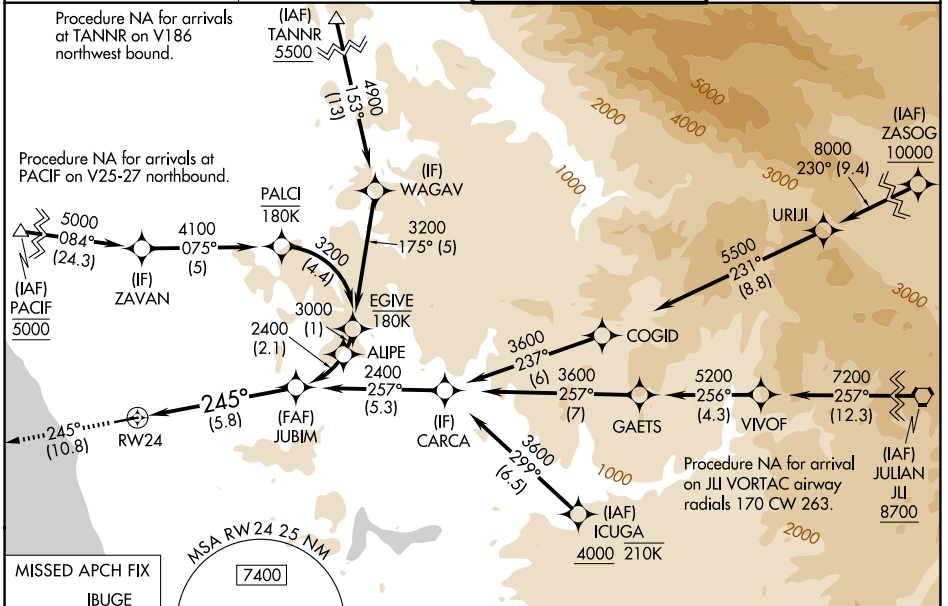
For uncompensated Baro-VNAV systems, procedure NA below 5°C or above 54°C. For inop ALS increase RNP 0.10 visibility to RVR 6000 and RNP 0.30 visibility to 1 3/4 SM all Cats.

MALSR



MISSED APPROACH: Climb to 2000 on track 245° to IBUGE and hold.

ATIS 120.15	SOCAL APP CON 127.3 323.0	PALOMAR TOWER* 118.6 (CTAF) 0 276.4	GND CON 121.8
-----------------------	-------------------------------------	---	-------------------------

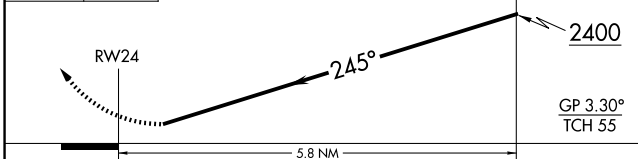


2000
↑
fr 245°

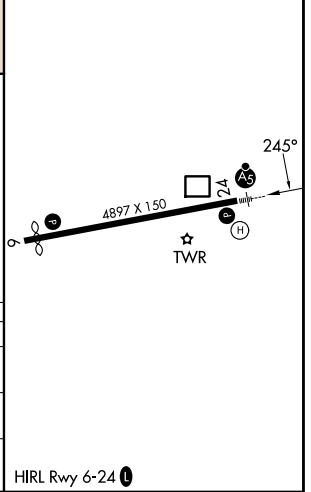
IBUGE

VGSI and RNAV glidepath not coincident (VGSI Angle 3.20/TCH 54).
See planview for multiple IF locations.

JUBIM
2400



ELEV 331	D TDZE 326
----------	-------------------



CATEGORY	A	B	C	D
RNP 0.10 DA		745/40	419 (500-3/4)	
RNP 0.30 DA		931-1 3/8	605 (600-1 3/8)	

AUTHORIZATION REQUIRED

HIRL Rwy 6-24

SW-3, 11 JUN 2026 to 09 JUL 2026

SW-3, 11 JUN 2026 to 09 JUL 2026