

APP CRS	Rwy Ldg	4600
065°	TDZE	331
	Apt Elev	331

RNAV (RNP) Z RWY 6

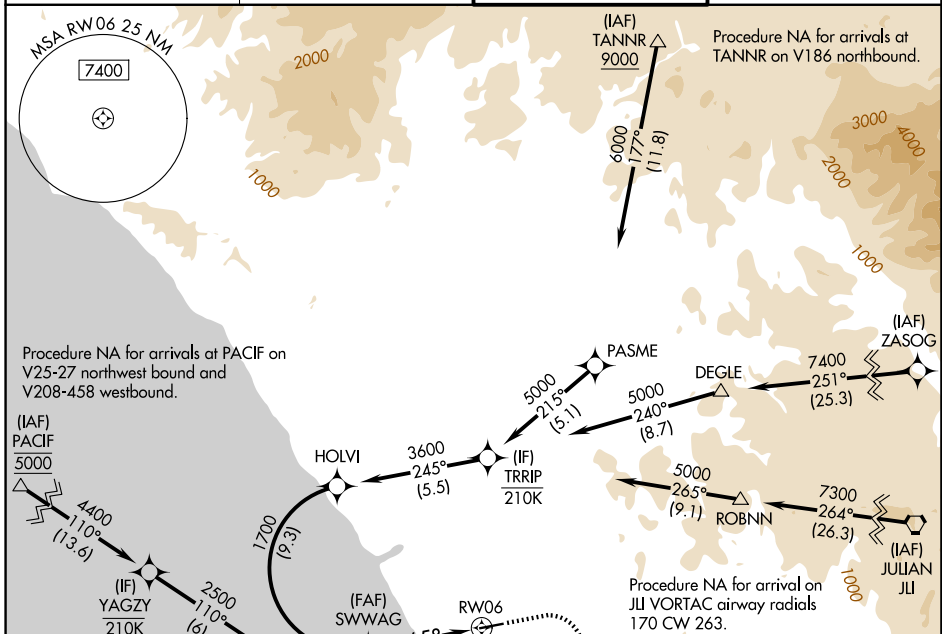
MC CLELLAN-PALOMAR (CRQ)

RNP AR APCH - GPS. Authorization required. From HOLVI: RF

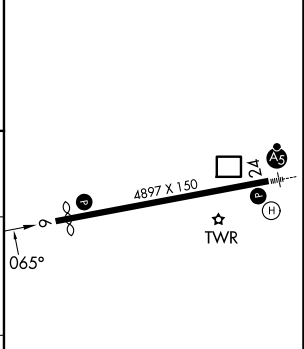
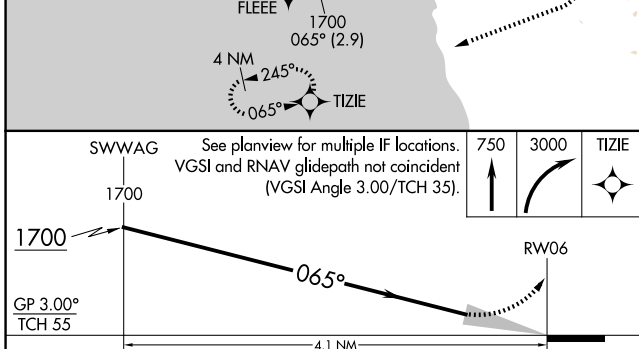
▼ For uncompensated Baro-VNAV systems, procedure NA below 5°C or above 54°C.

MISSED APPROACH: Climb to 750 then climbing right turn to 3000 direct TIZIE and hold, continue climb-in-hold to 3000.
*Missed approach requires minimum climb of 280 feet per NM to 1800.

ATIS 120.15	SOCAL APP CON 127.3 323.0	PALOMAR TOWER★ 118.6 (CTAF) 0 276.4	GND CON 121.8
-----------------------	-------------------------------------	---	-------------------------



ELEV 331	D TDZE 331
----------	-------------------



CATEGORY	A	B	C	D
RNP 0.30 DA*		637-7/8	306 (400-7/8)	
RNP 0.30 DA		750-1 1/8	419 (500-1 1/8)	

AUTHORIZATION REQUIRED

HIRL Rwy 6-24

SW-3, 11 JUN 2026 to 09 JUL 2026

SW-3, 11 JUN 2026 to 09 JUL 2026