

WAAS CH <b>78129</b> <b>W24A</b>	APP CRS <b>245°</b>	Rwy Ldg TDZE Apt Elev	<b>4897</b> <b>326</b> <b>331</b>
--	------------------------	-----------------------------	---

# RNAV (GPS) Y RWY 24

MC CLELLAN-PALOMAR (CRQ)

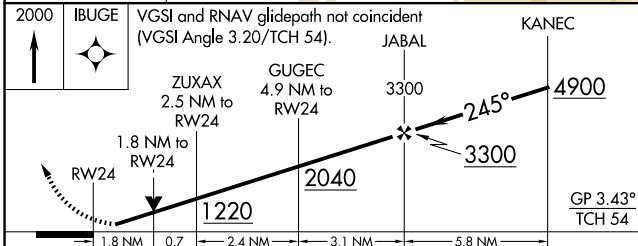
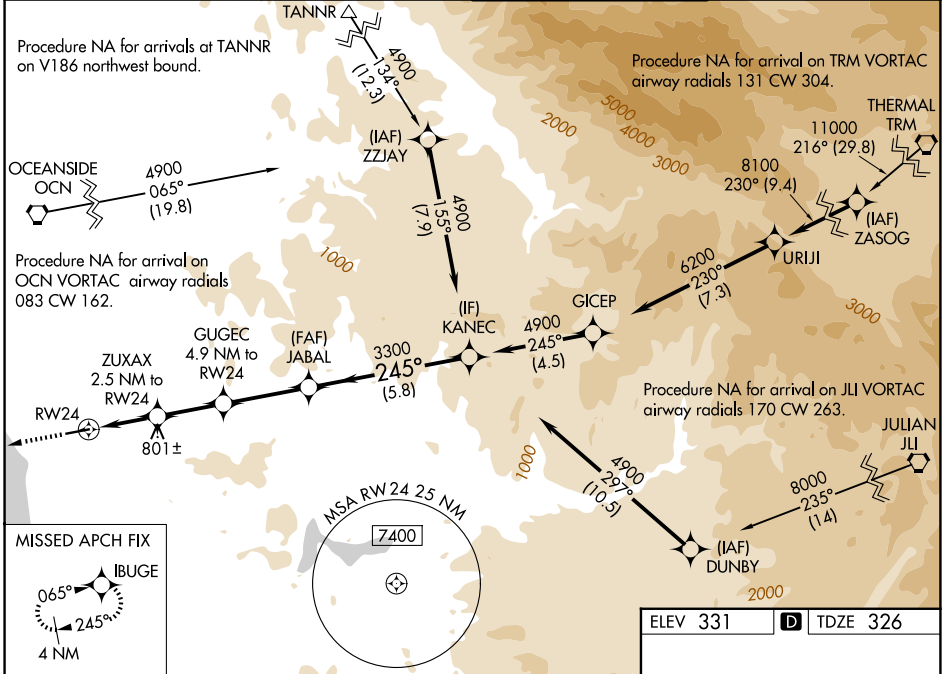
RNP APCH - GPS.

⚠ For uncompensated Baro-VNAV systems, LNAV/VNAV NA below 5°C or above 54°C. Rwy 24 helicopter visibility reduction below RVR 4000 NA. For inop ALS, increase LPV Cat C visibility to RVR 4500 and LNAV/VNAV all Cats to 1 3/4 SM and LNAV Cat A/B to RVR 5500 and Cat C to 1 7/8 SM.

MAISR

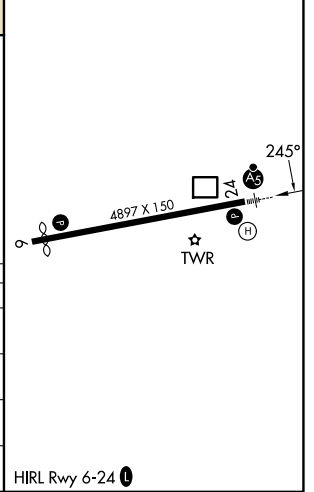
MISSED APPROACH: Climb to 2000 direct IBUGE and hold.

ATIS <b>120.15</b>	SOCAL APP CON <b>127.3 323.0</b>	PALOMAR TOWER ★ <b>118.6 (CTAF) 0 276.4</b>	GND CON <b>121.8</b>
-----------------------	-------------------------------------	--	-------------------------



ELEV 331	<b>D</b> TDZE 326
----------	-------------------

CATEGORY	A	B	C	D
LPV DA	538/24	212 (300-1/2)	596/40 270 (300-3/4)	NA
LNAV/VNAV DA	927-1 3/8 601 (600-1 1/8)			NA
LNAV MDA	1000/40	674 (700-3/4)	1000-1 1/2 674 (700-1 1/2)	NA
CIRCLING	1000-1 669 (700-1)	1020-1 689 (700-1)	1260-2 3/4 929 (1000-2 3/4)	NA



SW-3, 11 JUN 2026 to 09 JUL 2026

SW-3, 11 JUN 2026 to 09 JUL 2026