

WAAS CH <b>93610</b> <b>W16A</b>	APP CRS <b>157°</b>	Rwy Ldg <b>4742</b> TDZE <b>26</b> Apt Elev <b>32</b>
--	------------------------	---

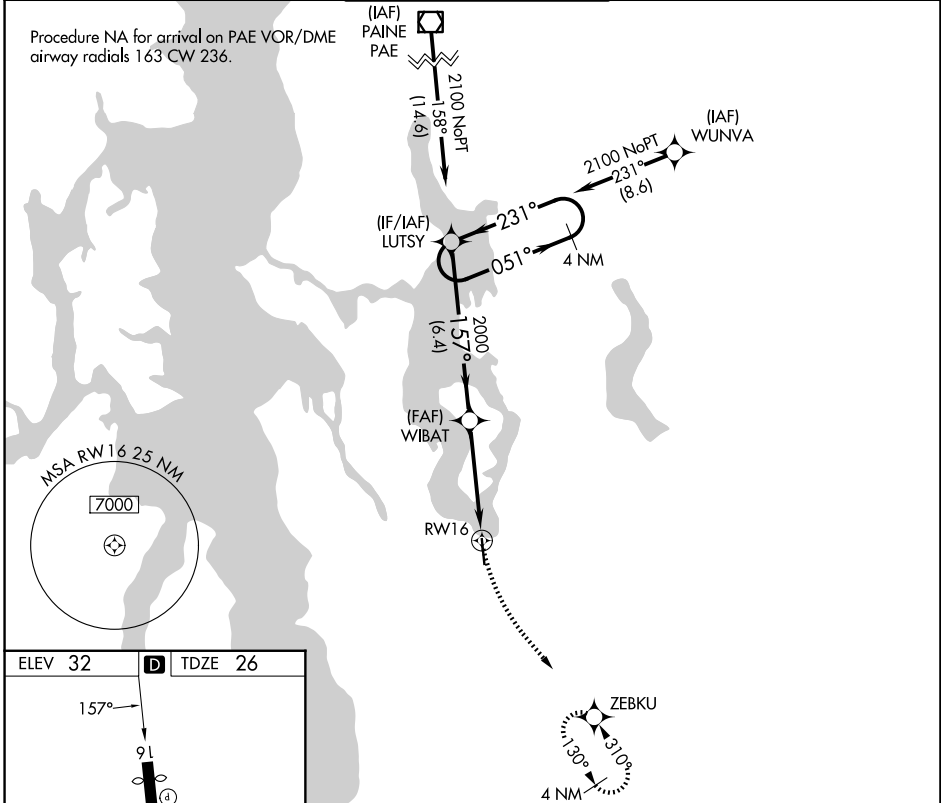
# RNAV (GPS) Z RWY 16

RENTON MUNI (RNT)

For uncompensated Baro-VNAV systems, LNAV/VNAV NA below -5°C (23°F) or above 48°C (119°F). DME/DME RNP-0.3 NA. Rwy 16 helicopter visibility reduction below 3/4 SM NA.

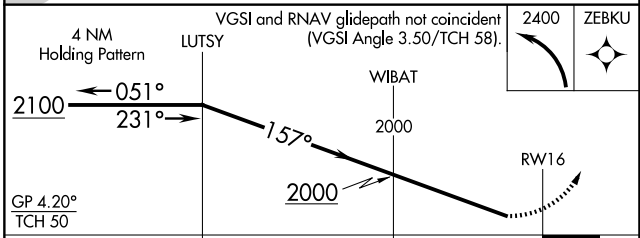
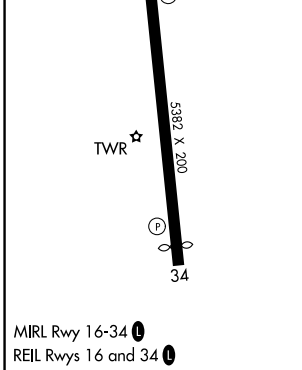
MISSED APPROACH: Climbing left turn to 2400 direct ZEBKU and hold.

ATIS <b>126.95</b>	SEATTLE APP CON <b>123.9 338.2 (16)</b> <b>125.9 306.9 (34)</b>	RENTON TOWER* <b>124.7 (CTAF) 0 256.9</b>	GND CON <b>121.6 256.9</b>	UNICOM <b>122.95</b>
-----------------------	---	--	-------------------------------	-------------------------



NW-1, 11 JUN 2026 to 09 JUL 2026

NW-1, 11 JUN 2026 to 09 JUL 2026



CATEGORY	A	B	C	D
LPV DA	526-13/8	500 (500-1%)		NA
LNAV/VNAV DA	668-17/8	642 (700-1%)		NA